

LOC/DME I-BTV <b>110.3</b> Chan 40	APP CRS <b>146°</b>	Rwy Idg TDZE Apt Elev	<b>7820</b> <b>326</b> <b>335</b>
--	------------------------	-----------------------------	---

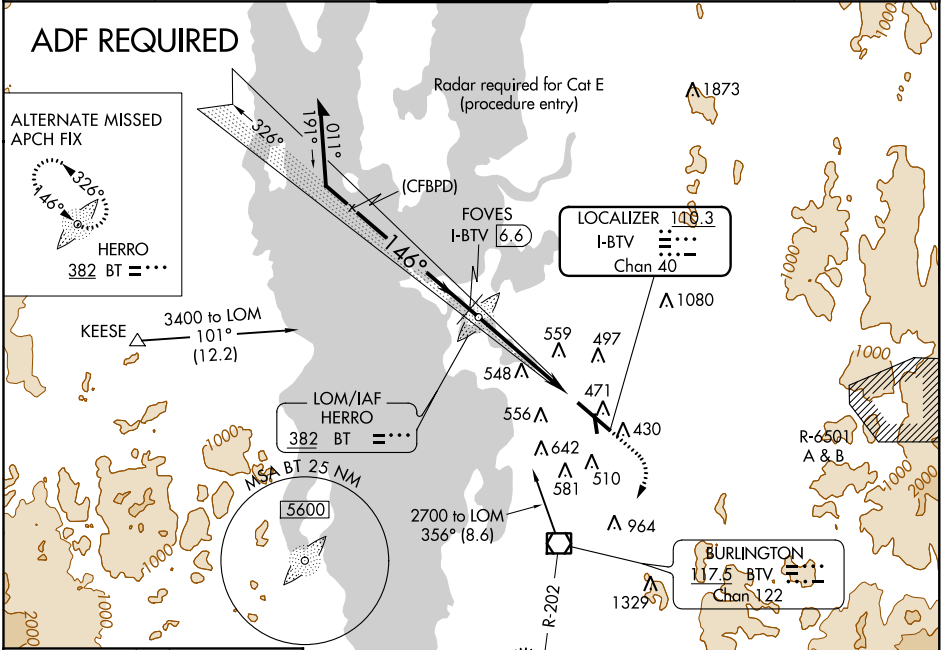
# ILS or LOC/DME RWY 15

BURLINGTON INTL (BTV)

**▲** For inop MALS/R, increase S-LOC 15 Cat C, D, and E visibility to RVR 5000. Night landing: Rwy 1 NA. DME required.  
**\*RVR 1800** authorized with the use of FD or AP or HUD to DA.

**MALSR** MISSED APPROACH: Climb to 800 then climbing right turn to 3000 direct BTV VOR/DME on BTV VOR/DME R-202 to WINLA INT/BTV 6.4 DME and hold.

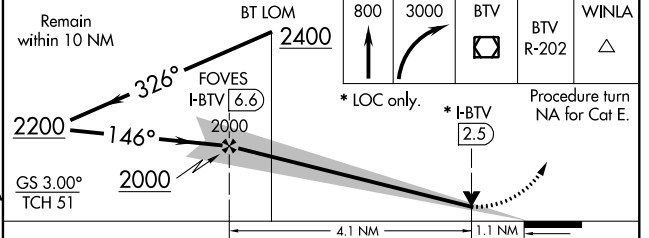
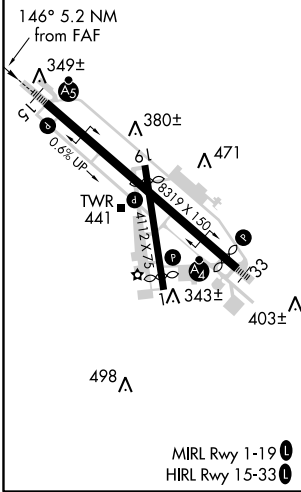
ATIS <b>123.8 269.9</b>	BURLINGTON APP CON * <b>121.1 278.8</b>	BURLINGTON TOWER * <b>118.3 (CTAF) 0 257.8</b>	BURLINGTON RADIO <b>122.6 255.4</b>	GND CON <b>126.3 348.6</b>
----------------------------	--	---	--	-------------------------------



NE-1, 24 MAY 2018 to 21 JUN 2018

NE-1, 24 MAY 2018 to 21 JUN 2018

ELEV 335	<b>D</b>	TDZE 326
----------	----------	----------



CATEGORY	A	B	C	D	E
S-ILS 15	* 526/24 200 (200-½)				
S-LOC 15	700/24	374 (400-½)	700/35 374 (400-¾)		
<b>C</b> CIRCLING	840-1 505 (600-1)	860-1 525 (600-1)	1200-2½ 865 (900-2½)	1380-3	1045 (1100-3)