

MODESTO THREE ARRIVAL

ST-375 (FAA)

SAN FRANCISCO INTL
SAN FRANCISCO, CALIFORNIA

SW-2, 14 JAN 2010 to 11 FEB 2010

CLOVIS TRANSITION (CZQ.MOD3): From over CZQ VORTAC via CZQ R-305 and MOD R-092 to MOD VOR/DME. Thence....

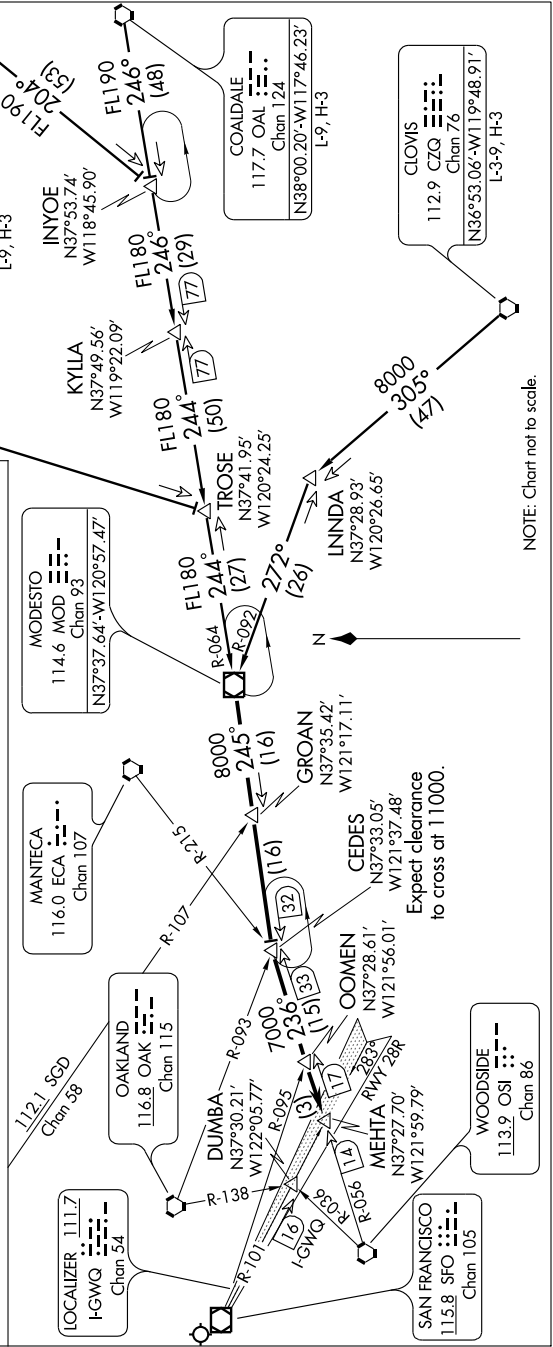
COALDALE TRANSITION (OAL.MOD3): From over OAL VORTAC via OAL R-246 and MOD R-064 to MOD VOR/DME. Thence....

MINA TRANSITION (MVA.MOD3): From over MVA VORTAC via MVA R-204, OAL R-246 and MOD R-064 to MOD VOR/DME. Thence....

MUSTANG TRANSITION (FMG.MOD3): From over FMG VORTAC via FMG R-182 and MOD R-064 to MOD VOR/DME. Thence....

...From over MOD VOR/DME via MOD R-245 to CEDES INT, then via OSI R-056 to OOMEN INT, then via OSI R-056 to MEHTA INT. Expect vectors to the final approach course.

LOST COMMUNICATIONS: Intercept and proceed via SFO RWY 28R localizer to DUMBA INT.



MODESTO THREE ARRIVAL

SAN FRANCISCO, CALIFORNIA
SAN FRANCISCO INTL

SW-2, 14 JAN 2010 to 11 FEB 2010