


LOC/DME I-LSW 109.5 Chan 32	APP CRS 233°	Rwy Idg 596 7543 TDZE 712 710 Apt Elev 716 716
---	------------------------	--

ILS or LOC RWY 23L

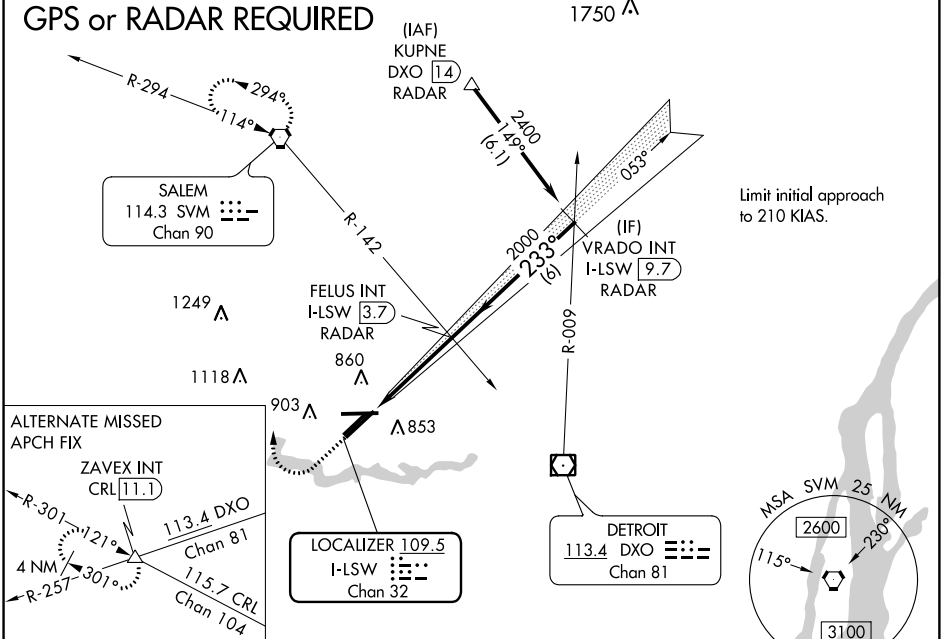
WILLOW RUN (YIP)

▼ Inoperative table does not apply to S-ILS 23L. For inoperative MALSR, increase S-LOC 23L Cat A/B visibility to 1 mile. Helicopter visibility reduction below 3/4 SM NA.

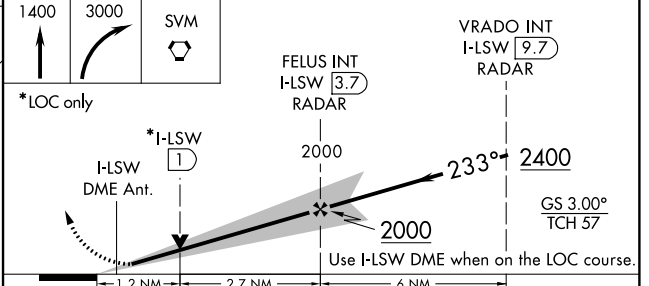
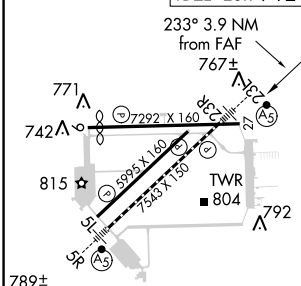
MALSR  MISSED APPROACH: Climb to 1400 then climbing right turn to 3000 direct SVM VORTAC and hold.

ATIS 127.425	DETROIT APP CON 118.95 363.2	WILLOW RUN TOWER 125.275 256.9	GND CON 119.975
------------------------	--	--	---------------------------

GPS or RADAR REQUIRED



ELEV 716	D TDZE 23L 710 TDZE 23R 712
----------	---------------------------------------



TDZ/CL Rwy 5R HIRL Rwy 5R-23L MIRL Rwys 5L-23R, and 9-27 FAF to MAP 3.9 NM					
Knots	60	90	120	150	180
Min:Sec	3:54	2:36	1:57	1:34	1:18
CIRCLING	1220-1	504 (600-1)	504 (600-1/2)	684 (700-2/4)	

EC-1, 07 DEC 2017 to 04 JAN 2018

EC-1, 07 DEC 2017 to 04 JAN 2018