

WAAS CH 73034 W15A	APP CRS 147°	Rwy Idg TDZE Apt Elev	3220 1348 1348
--	------------------------	-----------------------------	---

RNAV (GPS) RWY 15

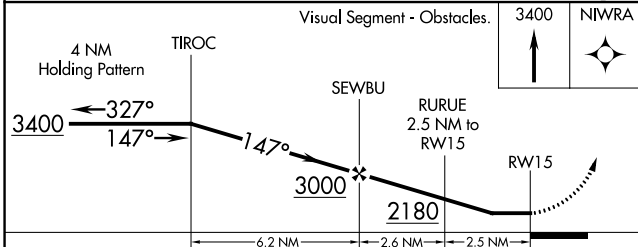
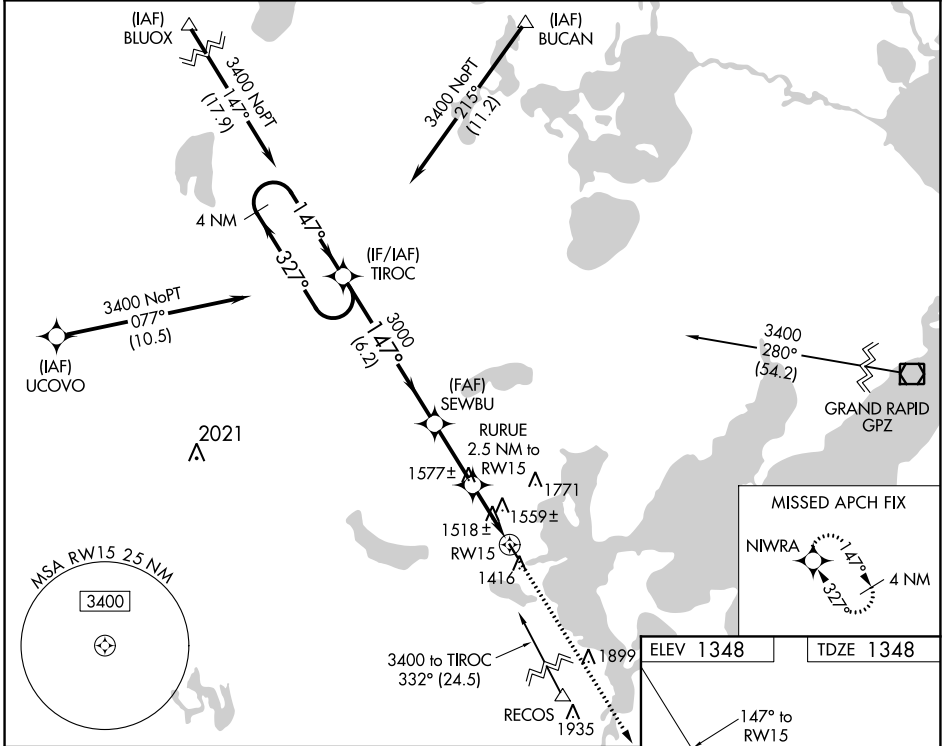
WALKER MUNI (Y49)

RNP APCH.

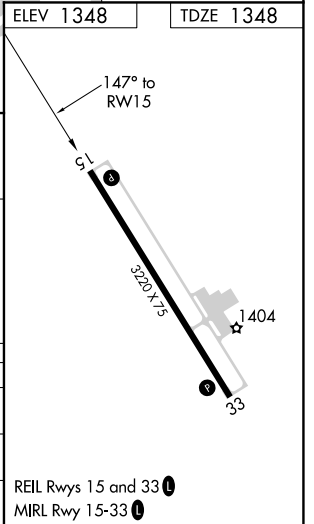
When local altimeter not received, use Longville altimeter setting and increase all MDA 60 feet; increase LP and LNAV Cat C visibility $\frac{1}{8}$ SM and Circling Cat C visibility $\frac{1}{4}$ SM. Procedure NA at night. Rwy 15 helicopter visibility reduction below 1 SM NA.

MISSED APPROACH: Climb to 3400 direct NIWRA and hold.

AWOS-3PT 119.0	MINNEAPOLIS CENTER 134.75 251.1	CTAF 122.90
--------------------------	---	-----------------------



CATEGORY	A	B	C	D
LP MDA	1780-1	432 (500-1)	1780-1 $\frac{1}{4}$ 432 (500-1 $\frac{1}{4}$)	NA
LNAV MDA	1820-1	472 (500-1)	1820-1 $\frac{3}{8}$ 472 (500-1 $\frac{3}{8}$)	NA
C CIRCLING	1860-1	512 (600-1)	2140-2 $\frac{1}{4}$ 792 (800-2 $\frac{1}{4}$)	NA



NC-1, 02 DEC 2021 to 30 DEC 2021

NC-1, 02 DEC 2021 to 30 DEC 2021

WAAS CH 82734 W33A	APP CRS 327°	Rwy Idg TDZE 1348 Apt Elev 1348
--	------------------------	---

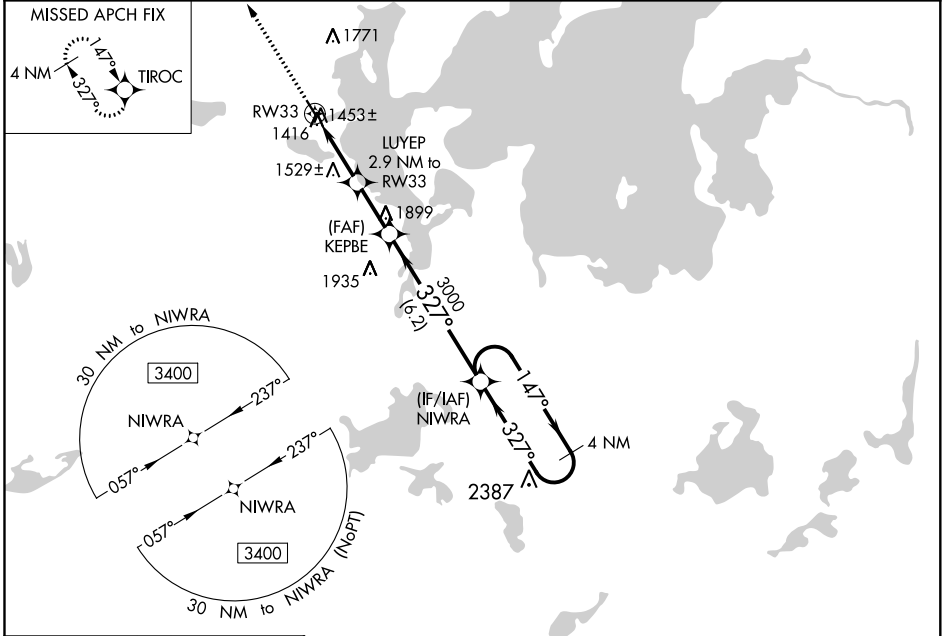
RNAV (GPS) RWY 33

WALKER MUNI (Y49)

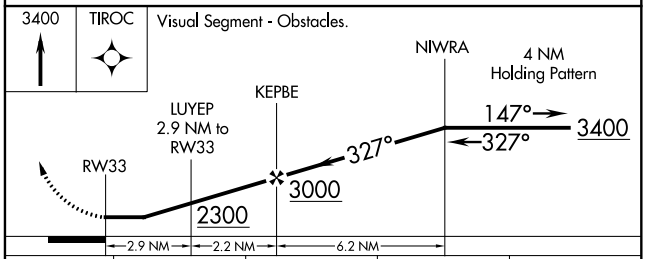
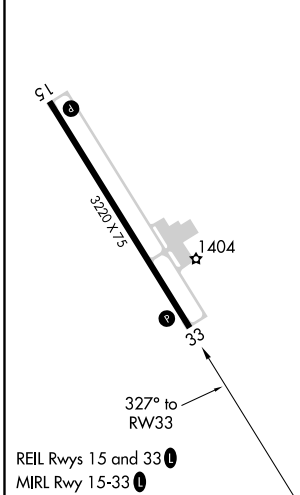
⚠ DME/DME RNP-0.3 NA. When local altimeter setting not received, use Longville altimeter setting and increase all MDA 60 feet; increase LP and Circling Cat C visibility ¼ SM; increase LNAV Cat C visibility ⅓ SM. Procedure NA at night. Rwy 33 helicopter visibility reduction below 1 SM NA.

⚠ MISSED APPROACH: Climb to 3400 direct TIROC and hold.

AWOS-3PT 119.0	MINNEAPOLIS CENTER 134.75 251.1	CTAF 122.90
--------------------------	---	-----------------------



ELEV 1348	TDZE 1348
-----------	-----------



CATEGORY	A	B	C	D
LP MDA	1720-1 372 (400-1)			NA
LNAV MDA	1780-1	432 (500-1)	1780-1¼ 432 (500-1¼)	NA
C CIRCLING	1860-1	512 (600-1)	2140-2¼ 792 (800-2¼)	NA

NC-1, 02 DEC 2021 to 30 DEC 2021

NC-1, 02 DEC 2021 to 30 DEC 2021