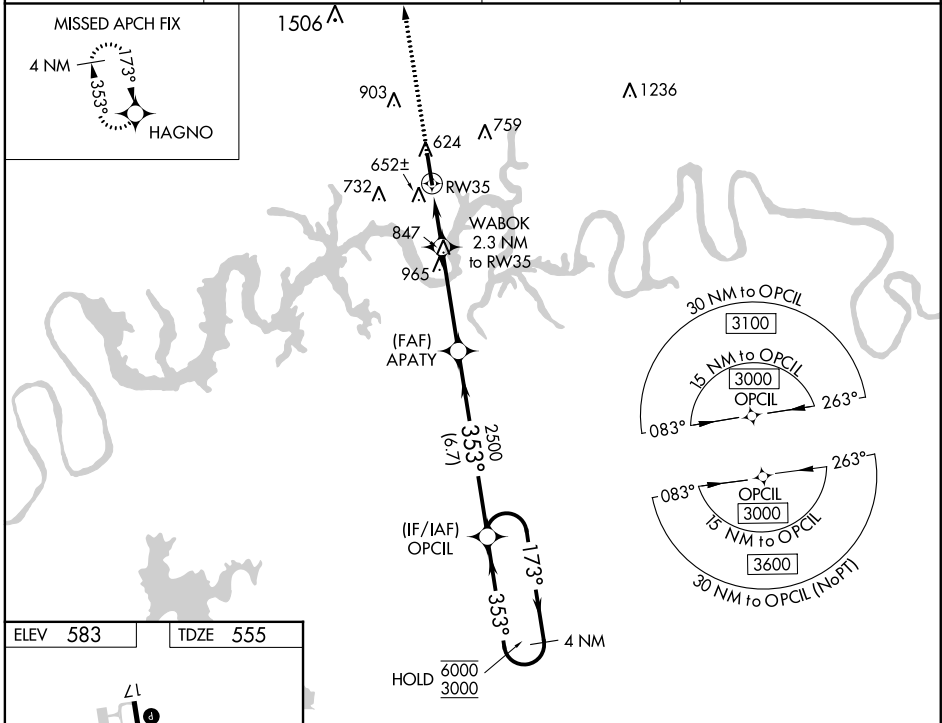


WAAS CH <b>65627</b> <b>W35A</b>	APP CRS <b>353°</b>	Rwy Idg TDZE Apt Elev	<b>6300</b> <b>555</b> <b>583</b>
--	------------------------	-----------------------------	---

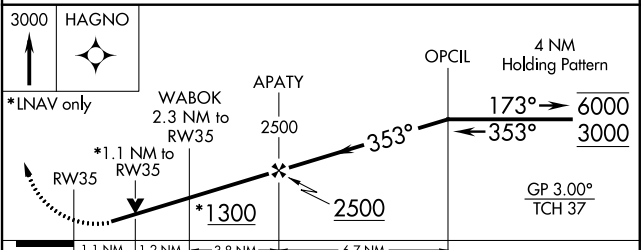
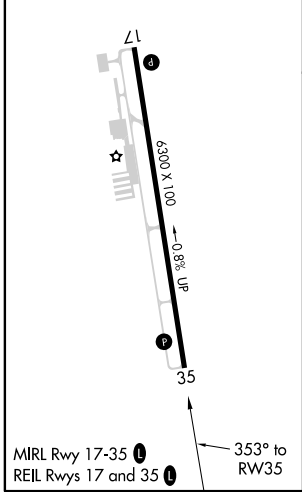
# RNAV (GPS) RWY 35

MUSIC CITY EXEC (XNX)

RNP APCH.			MISSED APPROACH: Climb to 3000 direct HAGNO and hold.
<p>▼ For uncompensated Baro-VNAV systems, LNAV/VNAV NA ▲ below -16°C or above 54°C. Rwy 35 helicopter visibility reduction below ¾ SM NA.</p>			
AWOS-3 <b>132.725</b>	NASHVILLE APP CON <b>118.4 360.7</b>	GCO <b>135.075</b>	UNICOM <b>123.05 (CTAF) 0</b>



ELEV 583	TDZE 555
----------	----------



3000	HAGNO				
*LNAV only	WABOK 2.3 NM to RW35	APATY 2500	OPCIL 4 NM Holding Pattern		
	*1.1 NM to RW35	*1300	2500	173° → 6000	← 353° 3000
	1.1 NM	1.2 NM	3.8 NM	6.7 NM	
CATEGORY	A	B	C	D	
LPV DA	805-¾		250 (300-¾)		
LNAV/VNAV DA	829-⅞		274 (300-⅞)		
LNAV MDA	920-1		365 (400-1)		
CIRCLING	1100-1 517 (600-1)	1120-1 537 (600-1)	1240-1¾ 657 (700-1¾)	1280-2¼ 697 (700-2¼)	

SE-1, 17 JUN 2021 to 15 JUL 2021

SE-1, 17 JUN 2021 to 15 JUL 2021