

APP CRS	Rwy Idg	2961
154°	TDZE	30
	Apt Elev	30

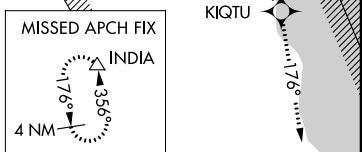
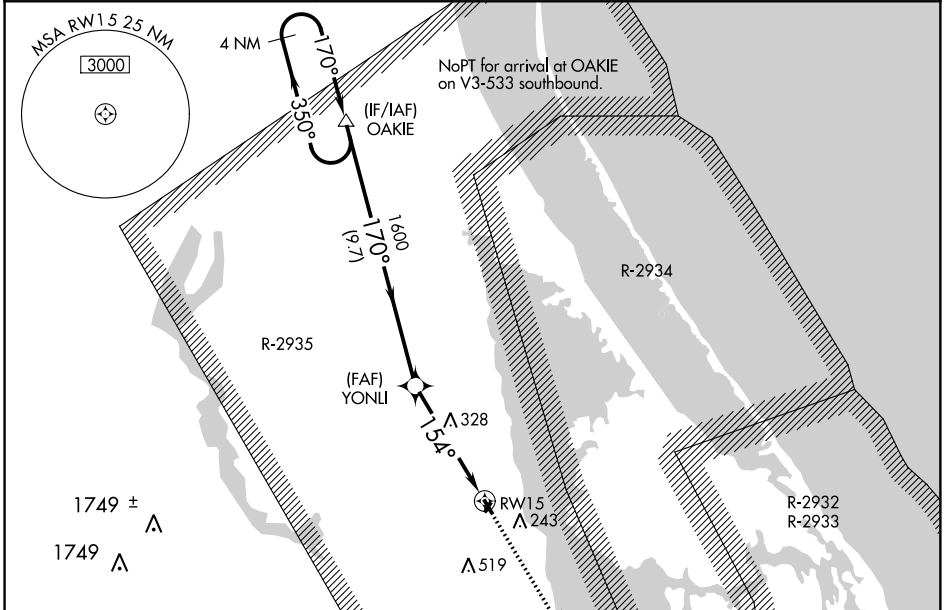
RNAV (GPS) RWY 15

ARTHUR DUNN AIR PARK (X21)

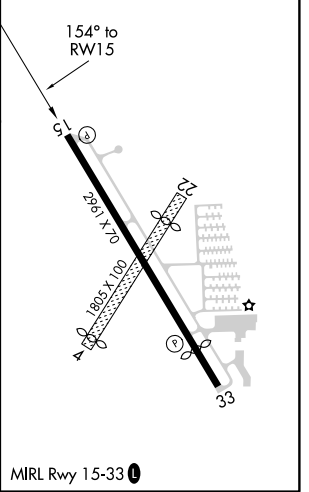
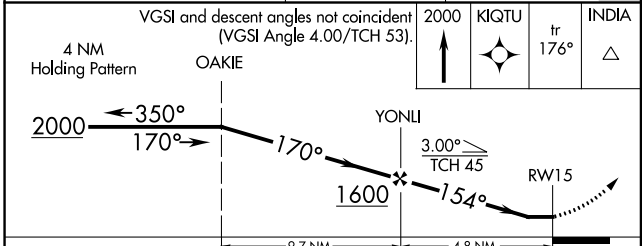
NA Procedure NA at night. DME/DME RNP-0.3 NA. Helicopter visibility reduction below 1 SM NA. Circling NA to Rwy 4/22. When local altimeter setting not received, use Orlando Intl altimeter setting and increase all MDA 80 feet, and increase LNAV Cat C visibility $\frac{1}{8}$ mile, and Circling Cat C $\frac{1}{4}$ mile.

MISSED APPROACH: Climb to 2000 direct KIQTU and on track 176° to INDIA and hold.

AWOS-3 119.725	ORLANDO APP CON 134.95 281.425	UNICOM 123.0 (CTAF) 0
--------------------------	--	---------------------------------



ELEV 30	TDZE 30
---------	---------



CATEGORY	A	B	C	D
LNAV MDA	580-1	550 (600-1)	580-1 $\frac{1}{8}$ 550 (600-1 $\frac{1}{8}$)	NA
CIRCLING	580-1	550 (600-1)	680-1 $\frac{3}{4}$ 650 (700-1 $\frac{3}{4}$)	NA

SE-3: 04 JAN 2018 to 01 FEB 2018

SE-3: 04 JAN 2018 to 01 FEB 2018

APP CRS	Rwy Idg	2532
334°	TDZE	30
	Apt Elev	30

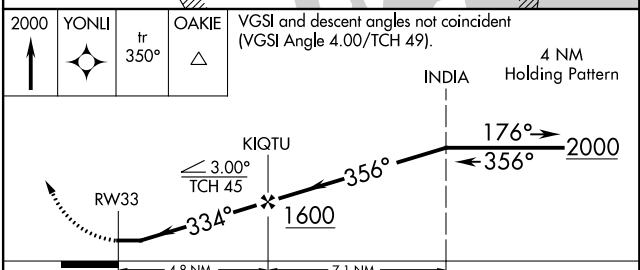
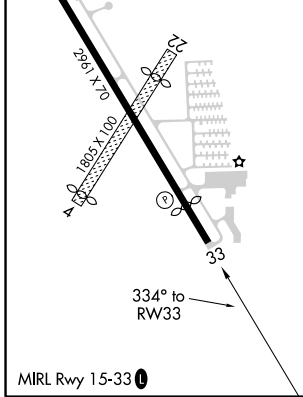
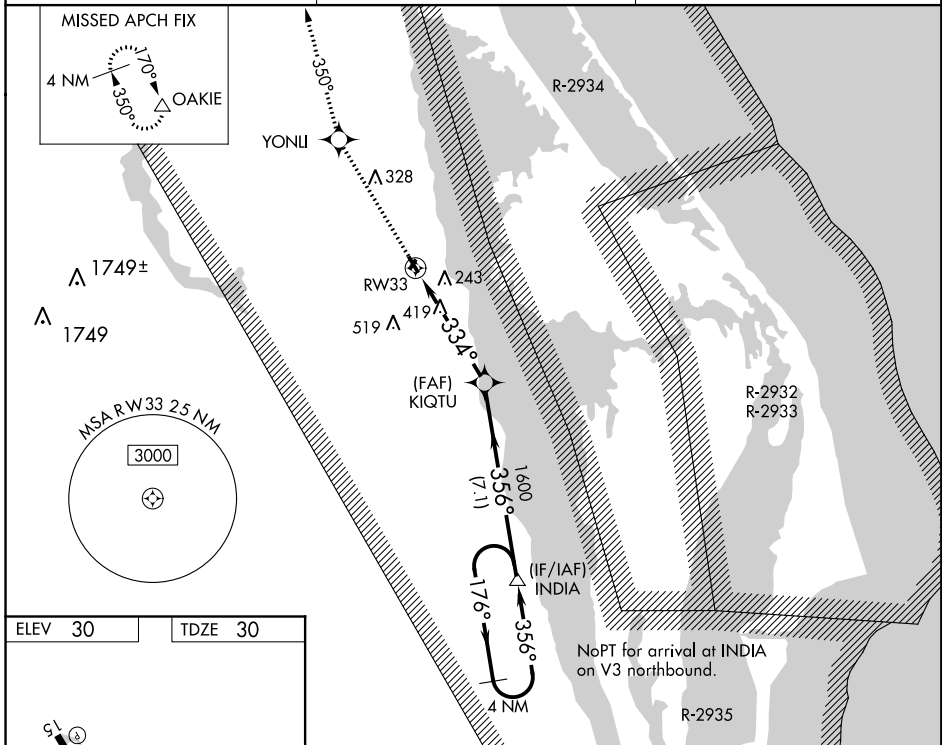
RNAV (GPS) RWY 33

ARTHUR DUNN AIR PARK (X21)

▼ DME/DME RNP-0.3 NA. Helicopter visibility reduction below 1SM NA. Procedure NA night.
▲ NA Circling NA to Rwys 4/22. When local altimeter setting not received, use Orlando Intl altimeter setting and increase all MDA 80 feet, and increase LNAV Cat B visibility ¼ mile, and Cat C visibility ½ mile. Increase Circling Cat B visibility ¼ mile and Cat C visibility ½ mile.

MISSED APPROACH:
 Climb to 2000 direct YONLI and on track 350° to OAKIE and hold.

AWOS-3 119.725	ORLANDO APP CON 134.95 281.425	UNICOM 123.0 (CTAF) 0
--------------------------	--	---------------------------------



CATEGORY	A	B	C	D
LNAV MDA	720-1	690 (700-1)	720-2 690 (700-2)	NA
CIRCLING	720-1	690 (700-1)	720-2 690 (700-2)	NA

SE-3: 04 JAN 2018 to 01 FEB 2018

SE-3: 04 JAN 2018 to 01 FEB 2018