

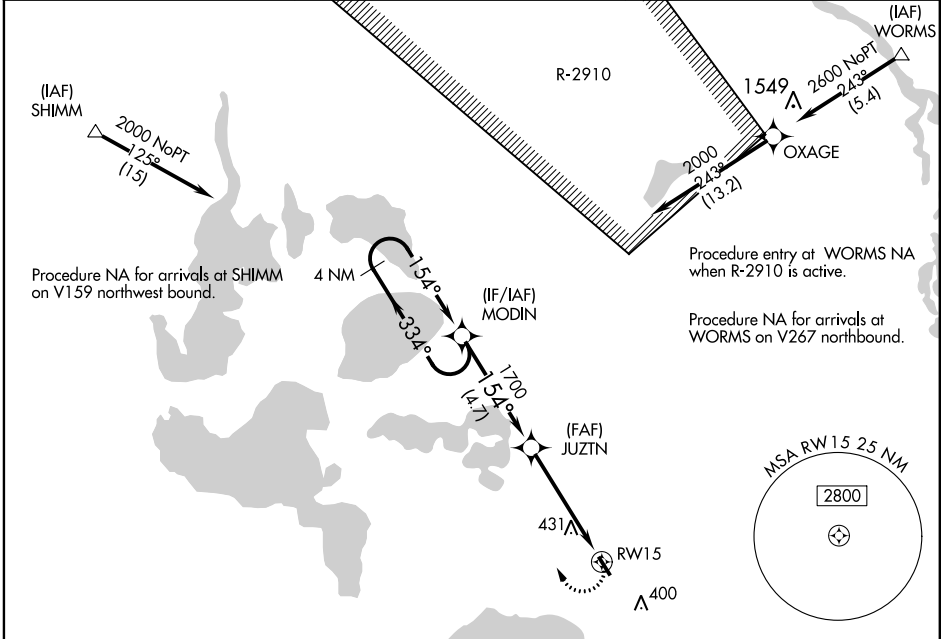
APP CRS 154°	Rwy Idg TDZE Apt Elev	N/A N/A 142
------------------------	-----------------------------	--

RNAV (GPS)-A
ORLANDO APOPKA (X04)

NA DME/DME RNP-0.3 NA. Procedure NA at night. Visibility reduction by helicopters NA. Use Leesburg Intl altimeter setting; when not received, use Executive altimeter setting.

MISSED APPROACH: Climbing right turn to 2000 direct MODIN and hold.

LEESBURG INTL ASOS 134.325	ORLANDO APP CON 119.4 351.9	UNICOM 123.05 (CTAF) 0
--------------------------------------	---------------------------------------	----------------------------------



4 NM Holding Pattern	VGSi and descent angles not coincident (VGSi Angle 3.50/TCH 10).			2000 MODIN
MODIN	JUZTN	RW15		
2000	1700			
← 334°	154° →	154°		
	3.00°	TCH 35		
	4.7 NM	4.8 NM		

CATEGORY	A	B	C	D
CIRCLING	780-1 638 (700-1)	840-1 698 (700-1)	NA	

IIRL Rwy 15-33 0

SE-3: 07 DEC 2017 to 04 JAN 2018

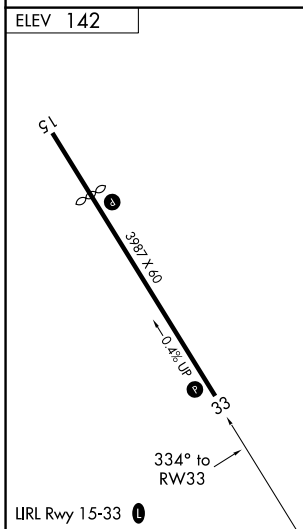
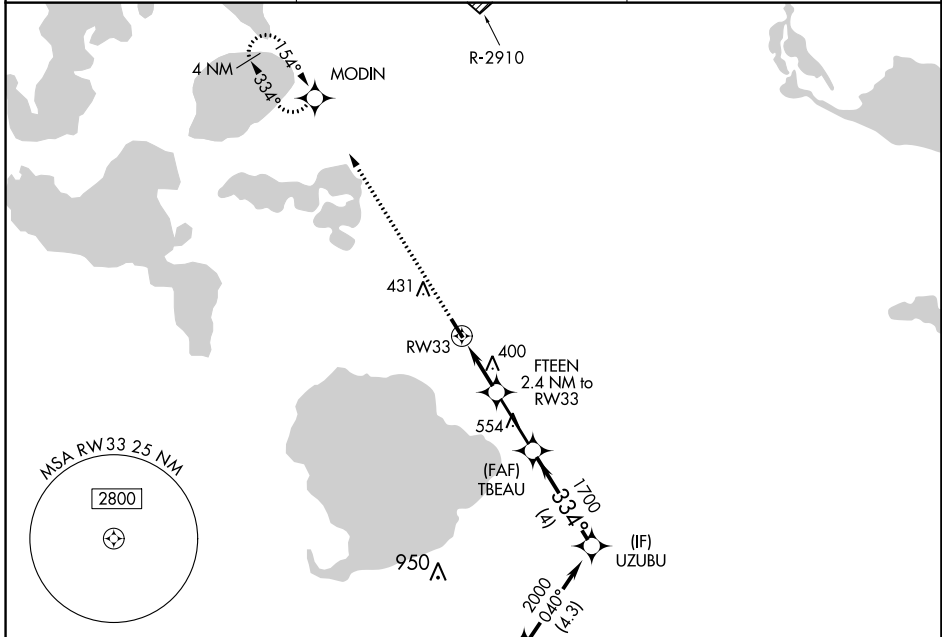
SE-3: 07 DEC 2017 to 04 JAN 2018

APP CRS 334°	Rwy Idg TDZE Apt Elev	N/A N/A 142
------------------------	-----------------------------	--

RNAV (GPS)-B
ORLANDO APOPKA (X04)

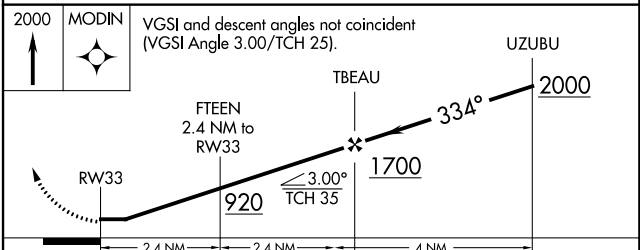
<p>NA DME/DME RNP-0.3 NA. Procedure NA at night. Visibility reduction by helicopters NA. Use Leesburg Intl altimeter setting; when not received, use Executive altimeter setting.</p>	<p>MISSED APPROACH: Climb to 2000 direct MODIN and hold.</p>
--	--

<p>LEESBURG INTL ASOS 134.325</p>	<p>ORLANDO APP CON 119.4 351.9</p>	<p>UNICOM 123.05 (CTAF) 0</p>
--	---	--



ELEV 142

Procedure NA for arrivals at JENSN on V152 southwest bound.



CATEGORY	A	B	C	D
CIRCLING	700-1 558 (600-1)	840-1 698 (700-1)	NA	

SE-3: 07 DEC 2017 to 04 JAN 2018

SE-3: 07 DEC 2017 to 04 JAN 2018