

LOC/DME I-RGL <b>108.5</b> Chan <b>22</b>	APP CRS <b>093°</b>	Rwy Idg TDZE Apt Elev <b>N/A</b> <b>N/A</b> <b>44</b>
---	------------------------	--

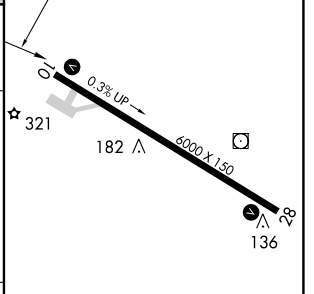
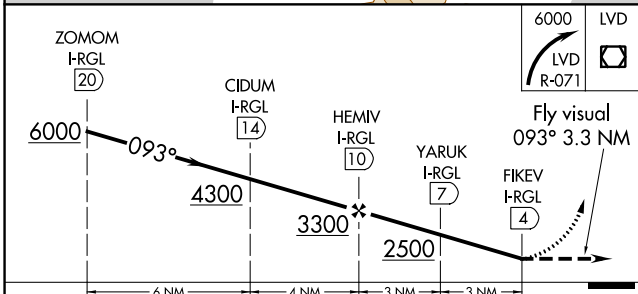
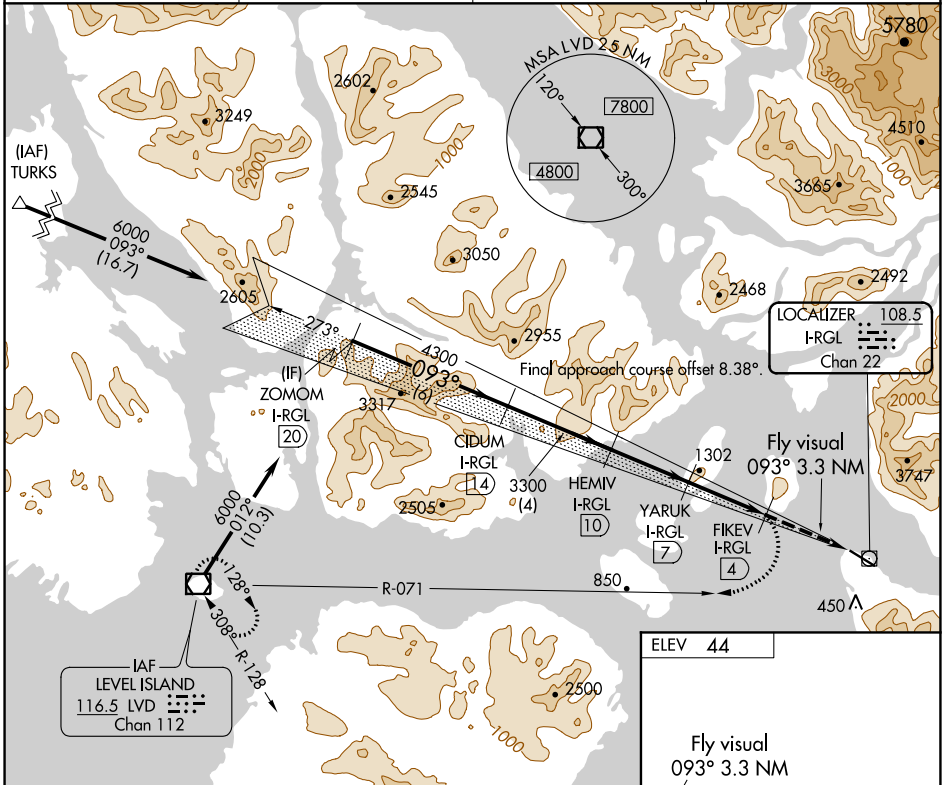
# LDA-C

## WRANGELL (WRG) (PAWG)

**⚠** Circling NA south of Rwy 10-28. DME required. Any go-around commenced after passing the MAP will not provide standard obstacle clearance.

**⚠** MISSED APPROACH: Immediate climbing right turn to 6000 on LVD VOR/DME R-071 to LVD VOR/DME and hold.

AWOS-3P <b>128.5</b>	ANCHORAGE CENTER <b>118.0</b>	SITKA RADIO <b>122.45</b>	CTAF <b>122.6</b>
-------------------------	----------------------------------	------------------------------	----------------------



CATEGORY	A	B	C	D
<b>C</b> CIRCLING	1560-3	1516 (1600-3)	2460-3 2416 (2500-3)	NA

REIL Rwys 10 and 28  
HIRL Rwy 10-28

AK, 05 NOV 2020 to 31 DEC 2020

AK, 05 NOV 2020 to 31 DEC 2020