

WAAS CH <b>82039</b> <b>W13A</b>	APP CRS <b>132°</b>	Rwy Idg TDZE Apt Elev	<b>5500</b> <b>4227</b> <b>4264</b>
--	------------------------	-----------------------------	---

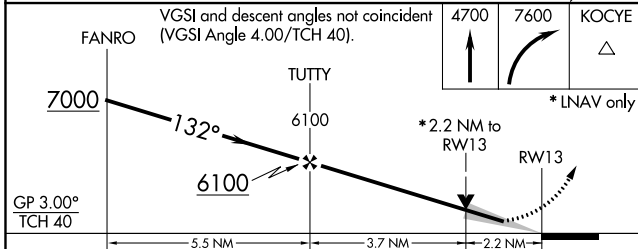
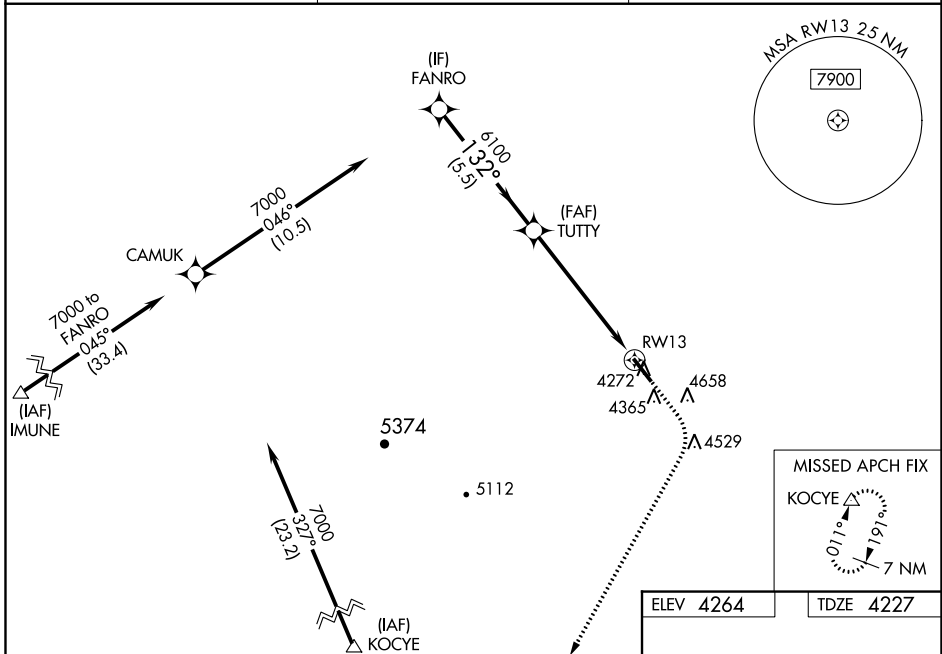
# RNAV (GPS) RWY 13

HULETT MUNI (W43)

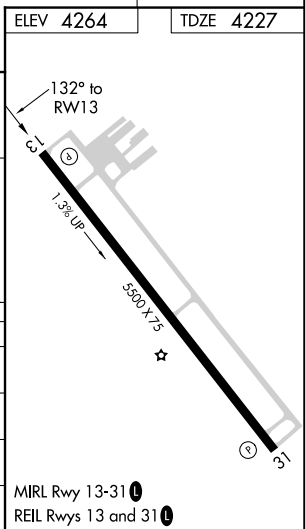
**⚠** For uncompensated Baro-VNAV systems, procedure NA below -23°C (-9°F) or above 53°C (127°F). Baro-VNAV and VDP NA when using Gillette altimeter setting.  
**⚠** -34°C DME/DME RNP-0.3 NA. When local altimeter setting not received, use Gillette altimeter setting and increase LPV DA to 4662 feet; LNAV/VNAV DA to 4807 feet, and all visibilities ½ mile. Increase all MDA 120 feet and LNAV Cat C/D visibility ½ mile, Circling Cat A/B ¼ mile, and Cat C ½ mile.

**MISSED APPROACH:**  
 Climb to 4700 then climbing right turn to 7600 direct KOCYE and hold.

AWOS-3PT <b>128.775</b>	DENVER CENTER <b>127.95 338.2</b>	UNICOM <b>122.8 (CTAF)</b> <b>⓪</b>
----------------------------	--------------------------------------	--



CATEGORY	A	B	C	D
LPV DA		4542-1½	315 (300-1½)	
LNAV/VNAV DA		4687-1¾	460 (500-1¾)	
LNAV MDA	5100-1 873 (900-1)	5100-1¼ 873 (900-1¼)	5100-2½	873 (900-2½)
<b>C</b> CIRCLING	5100-1 836 (900-1)	5100-1¼ 836 (900-1¼)	5100-2½ 836 (900-2½)	5400-3 1136 (1200-3)



NW-1, 29 MAR 2018 to 26 APR 2018

NW-1, 29 MAR 2018 to 26 APR 2018

APP CRS <b>011°</b>	Rwy Idg TDZE Apt Elev	<b>N/A</b> <b>N/A</b> <b>4264</b>
------------------------	-----------------------------	---

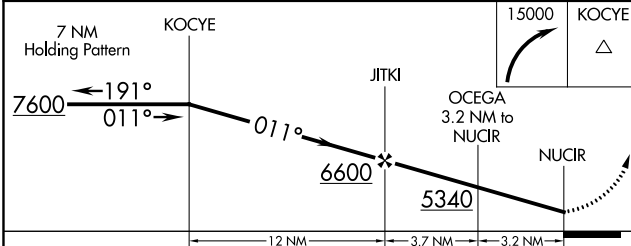
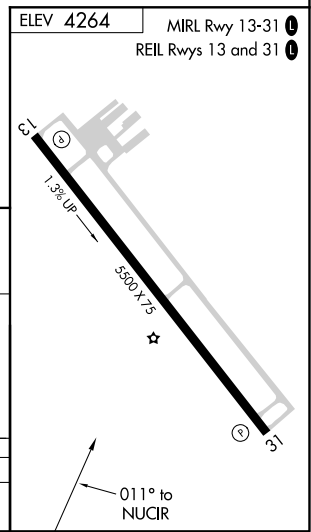
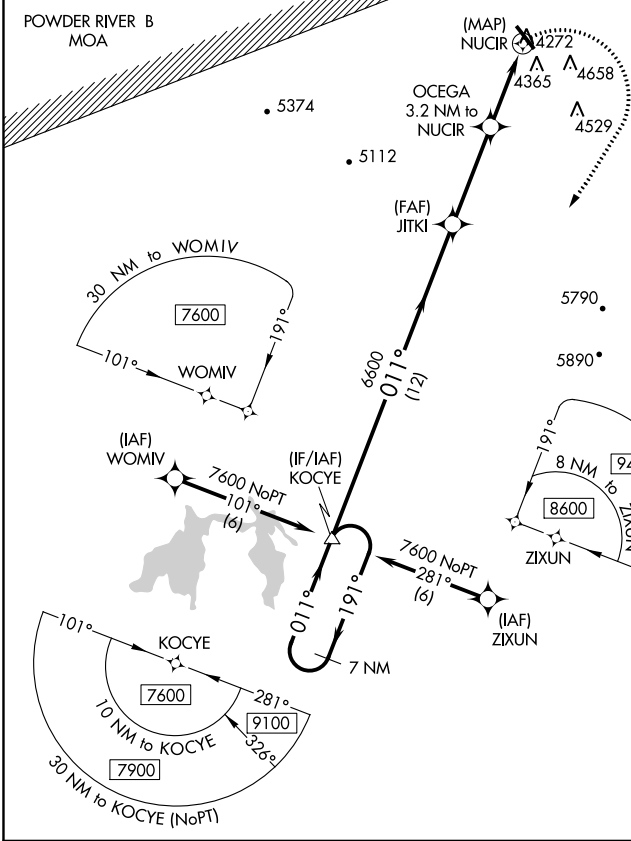
# RNAV (GPS)-A

HULETT MUNI (W43)

**NA**  
DME/DME RNP-0.3 NA. When local altimeter setting is not received use Gillette-Campbell County altimeter setting and increase all MDA 120 feet and visibility Cat B ¼ mile.

**MISSED APPROACH:** Climbing right turn to 15000 direct KOCYE and hold, continue climb-in-hold to 15000.

AWOS-3PT <b>128.775</b>	DENVER CENTER <b>127.95 338.2</b>	UNICOM <b>122.8 (CTAF)</b>
----------------------------	--------------------------------------	-------------------------------



CATEGORY	A	B	C	D
CIRCLING	4900-1 636 (700-1)	5020-1 756 (800-1)	NA	

NW-1, 29 MAR 2018 to 26 APR 2018

NW-1, 29 MAR 2018 to 26 APR 2018