

LLADN ONE DEPARTURE (RNAV)
 (LLADN1.LLADN) 03APR14

(LLADN1.LLADN) 17341
 LLADN ONE DEPARTURE (RNAV)
 AL-10288 (FAA)

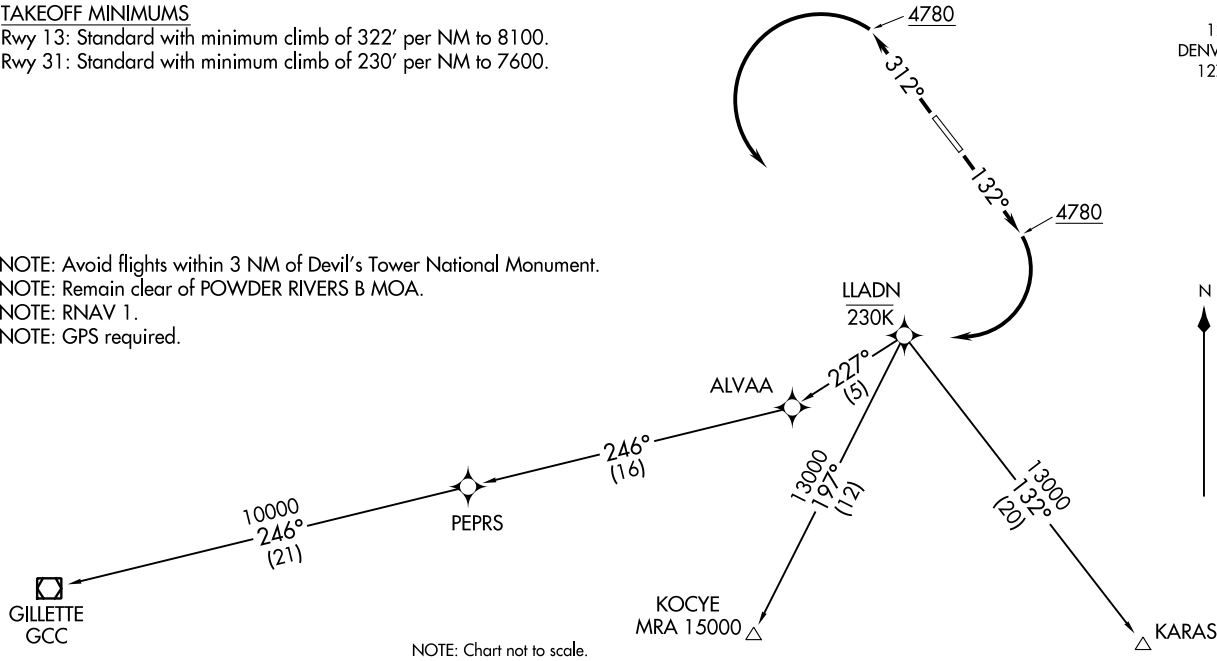
HULETT MUNI (W43)
 HULETT, WYOMING

UNICOM
 122.8 (CTAF)
 DENVER CENTER
 127.95 338.2

TAKEOFF MINIMUMS

Rwy 13: Standard with minimum climb of 322' per NM to 8100.
 Rwy 31: Standard with minimum climb of 230' per NM to 7600.

NOTE: Avoid flights within 3 NM of Devil's Tower National Monument.
 NOTE: Remain clear of POWDER RIVERS B MOA.
 NOTE: RNAV 1.
 NOTE: GPS required.



NOTE: Chart not to scale.

DEPARTURE ROUTE DESCRIPTION

TAKEOFF RUNWAY 13: Climb heading 132° to 4780, then right turn direct LLADN, cross LLADN at/below 230K. Thence
TAKEOFF RUNWAY 31: Climb heading 312° to 4780, then left turn direct LLADN, cross LLADN at/below 230K. Thence
 Expect further clearance to filed altitude 10 minutes after departure.

LOST COMMUNICATIONS: Alternate frequency 135.6 / 363.025.

- GILLETTE TRANSITION (LLADN1.GCC)
- KARAS TRANSITION (LLADN1.KARAS)
- KOCYE TRANSITION (LLADN1.KOCYE)

HULETT, WYOMING
 HULETT MUNI (W43)