

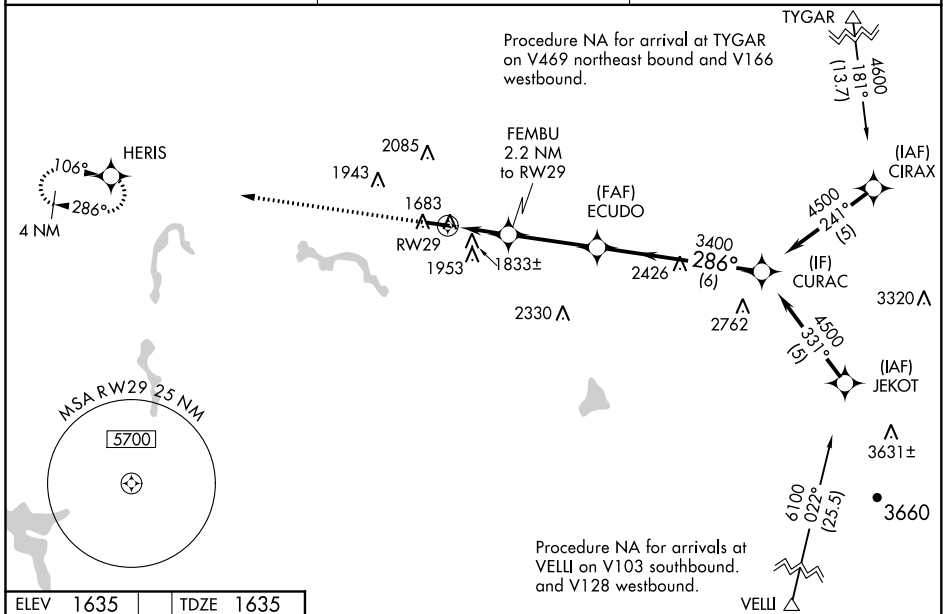
WAAS CH 56624 W29A	APP CRS 286°	Rwy ldg TDZE Apt Elev	4201 1635 1635
--	------------------------	-----------------------------	---

RNAV (GPS) RWY 29

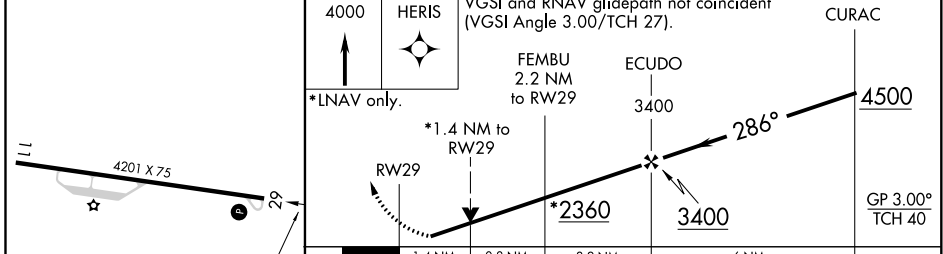
UPSHUR COUNTY RGNL (W22)

RNP APCH.	<p>MISSED APPROACH: Climb to 4000 direct HERIS and hold.</p>
<p>For uncompensated Baro-VNAV systems, LNAV/VNAV NA below -18°C or above 54°C. Rwy 29 helicopter visibility reduction below 3/4 SM NA.</p>	

AWOS-3 119.975	CLARKSBURG APP CON * 121.15 284.65	UNICOM 122.8 (CTAF)
--------------------------	--	-------------------------------



ELEV 1635	TDZE 1635
-----------	-----------



CATEGORY	A	B	C	D
LPV DA	1885-1	250 (300-1)		NA
LNAV/VNAV DA	2125-1 3/4	490 (500-1 3/4)		NA
LNAV MDA	2100-1	465 (500-1)	2100-1 3/8 465 (500-1 3/8)	NA
CIRCLING	2240-1 605 (700-1)	2260-1 625 (700-1)	2400-2 1/4 765 (800-2 1/4)	NA

NE-4, 02 DEC 2021 to 30 DEC 2021

NE-4, 02 DEC 2021 to 30 DEC 2021

MIRL Rwy 11-29