

WAAS CH 97716 W27A	APP CRS 275°	Rwy Idg TDZE Apt Elev	8003 72 80
--	------------------------	-----------------------------	---------------------------------------

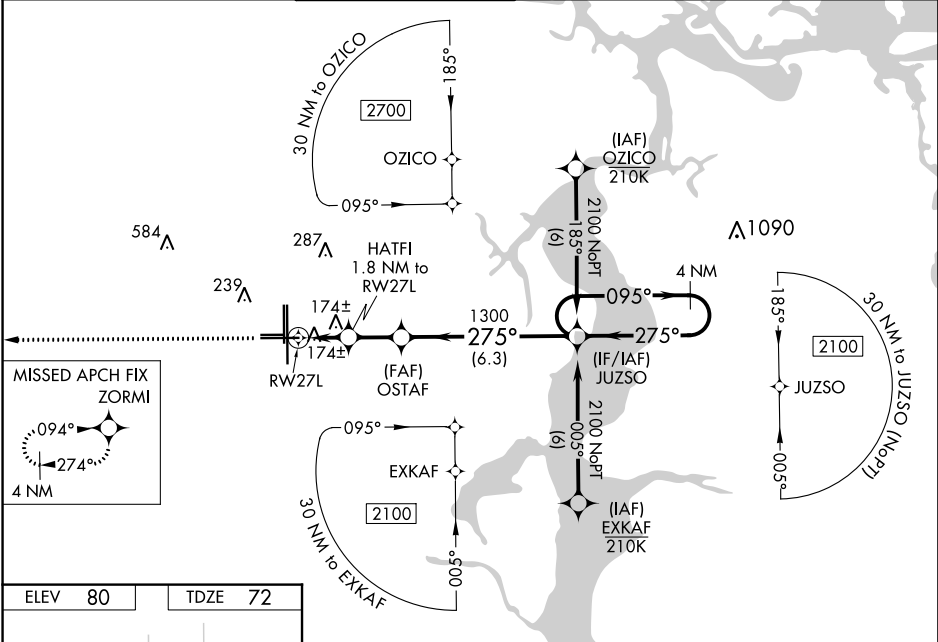
RNAV (GPS) RWY 27L

CECIL (VQQ)

⚠ Baro-VNAV and VDP NA when using Jacksonville Intl altimeter setting. For uncompensated Baro-VNAV systems, LNAV/VNAV NA below -15°C (5°F) or above 54°C (130°F).
⚠ DME/DME RNP-0.3 NA. Helicopter visibility reduction below ¾ NA. When local altimeter setting not received, use Jacksonville Intl altimeter setting and increase all DA 52 feet and all MDA 60 feet. Increase LPV all Cats visibility to 1¼ mile, LNAV/VNAV all Cats visibility to 1½ mile, and LNAV Cats C/D visibility to 1¼ mile.

MISSED APPROACH:
Climb to 2000 direct ZORMI and hold.

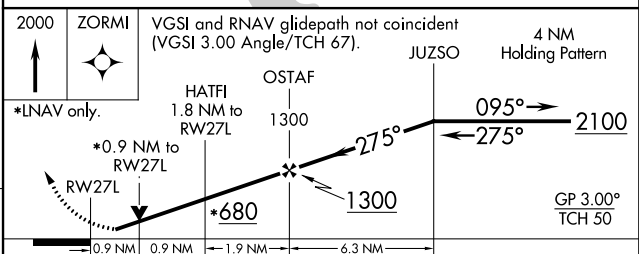
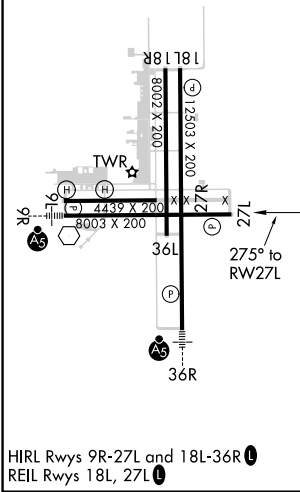
ATIS 125.275	JACKSONVILLE APP CON 127.775 377.075	CECIL TOWER* 126.1 (CTAF) 387.025	GND CON 121.625 384.4	CLNC DEL 123.975	GCO 121.725	UNICOM 122.95
------------------------	--	---	---------------------------------	----------------------------	-----------------------	-------------------------



SE-3, 18 JUN 2020 to 16 JUL 2020

SE-3, 18 JUN 2020 to 16 JUL 2020

ELEV 80	TDZE 72
----------------	----------------



CATEGORY	A	B	C	D
LPV DA		393-1	321 (400-1)	
LNAV/VNAV DA		451-1¼	379 (400-1¼)	
LNAV MDA		440-1	368 (400-1)	
C CIRCLING	540-1 460 (500-1)	560-1 480 (500-1)	600-1½ 520 (600-1½)	640-2 560 (600-2)