

WAAS CH <b>56616</b> <b>W18A</b>	APP CRS <b>185°</b>	Rwy Idg <b>12503</b> TDZE <b>79</b> Apt Elev <b>80</b>
--	------------------------	--

# RNAV (GPS) RWY 18L

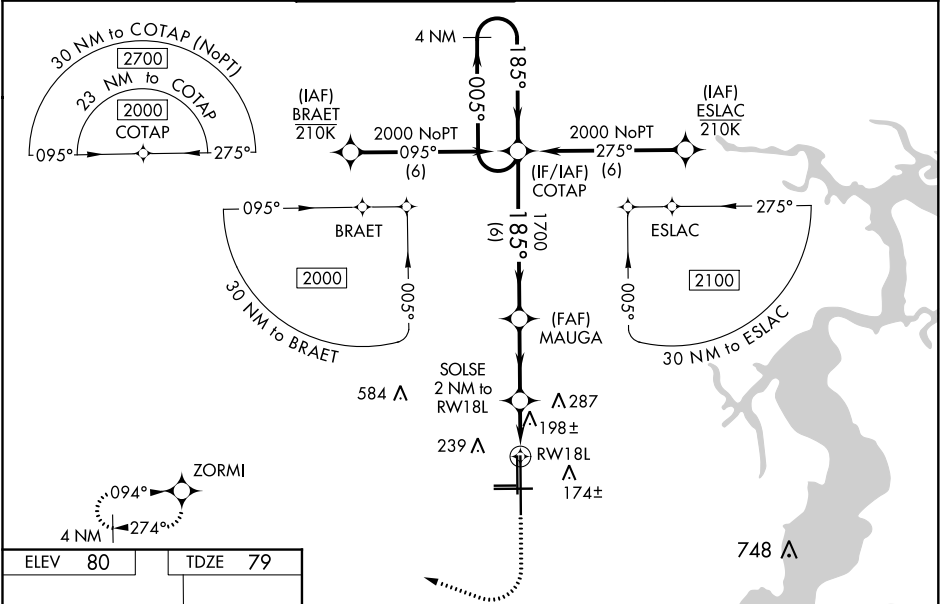
CECIL (VQQ)

**▼** Baro-VNAV NA when using Jacksonville Intl altimeter setting. For uncompensated Baro-VNAV systems, LNAV/VNAV NA below -1.5°C (5°F) or above 54°C (130°F). DME/DME RNP-0.3 NA.

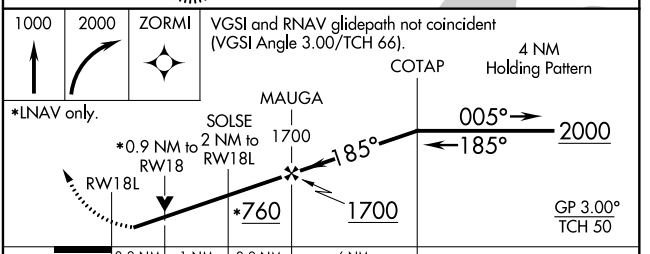
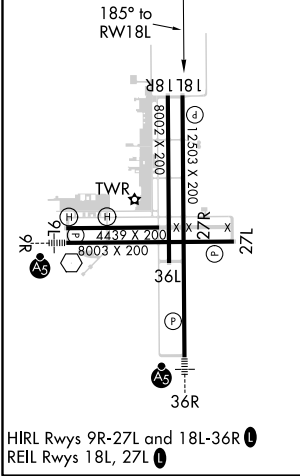
**▲** When local altimeter setting not received, use Jacksonville Intl altimeter setting and increase all DA 52 feet and all MDA 60 feet. For inop MALS, increase LNAV Cats C/D visibility to 1½ mile. For inop MALS, when using Jacksonville Intl altimeter setting, increase LNAV/VNAV all Cats visibility to 1½ mile and LNAV Cats C/D visibility to 1¾ mile. Inop table does not apply to LPV and LNAV/VNAV all Cats and LNAV Cat A/B visibilities. When using Jacksonville Intl altimeter setting, inop table does not apply to LPV all Cats and LNAV Cat A/B visibilities. VDP NA when using Jacksonville Intl altimeter setting.

MISSED APPROACH: Climb to 1000 then climbing right turn to 2000 direct ZORMI and hold.

ATIS <b>125.275</b>	JACKSONVILLE APP CON <b>127.775 377.075</b>	CECIL TOWER* <b>126.1</b> (CTAF) <b>387.025</b>	GND CON <b>121.625 384.4</b>	CLNC DEL <b>123.975</b>	GCO <b>121.725</b>	UNICOM <b>122.95</b>
------------------------	--	--	---------------------------------	----------------------------	-----------------------	-------------------------



ELEV <b>80</b>	TDZE <b>79</b>
----------------	----------------



CATEGORY	A	B	C	D
LPV DA		329-1	250 (300-1)	
LNAV/VNAV DA		368-1	289 (300-1)	
LNAV MDA		460-1	381 (400-1)	
<b>C</b> CIRCLING	540-1 460 (500-1)	560-1 480 (500-1)	600-1½ 520 (600-1½)	640-2 560 (600-2)

SE-3, 16 JUL 2020 to 13 AUG 2020

SE-3, 16 JUL 2020 to 13 AUG 2020