

APP CRS	Rwy Idg	3881
262°	TDZE	53
	Apt Elev	53

RNAV (GPS) RWY 26

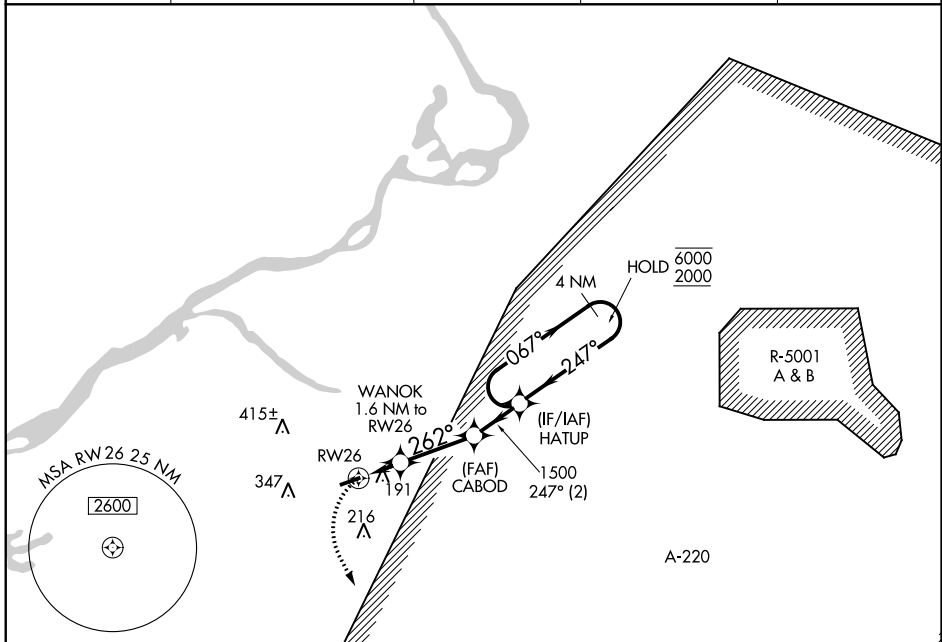
SOUTH JERSEY RGNL (VAY)

RNP APCH.

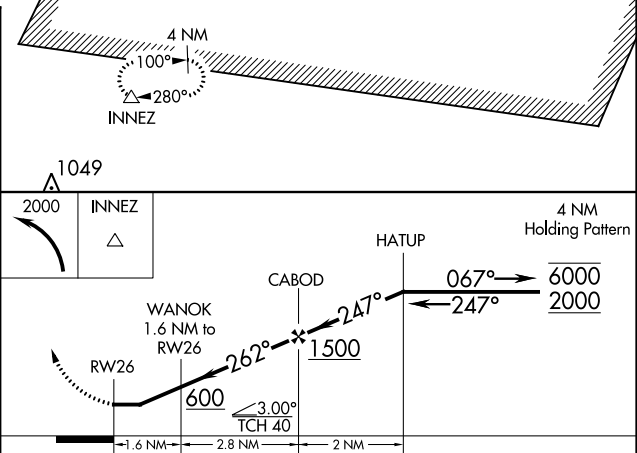
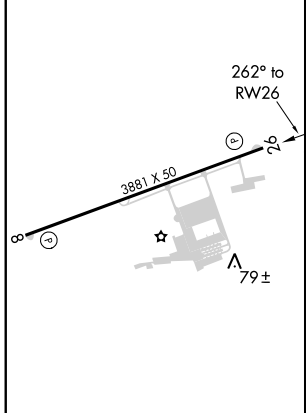
Rwy 26 helicopter visibility reduction below 1 SM NA. Procedure NA at night.

MISSED APPROACH:
Climbing left turn to 2000
direct INNEZ and hold.

ASOS	MC GUIRE APP CON	GCO	UNICOM	
119.325	124.15 363.8	121.725	122.8 (CTAF)	123.3



ELEV 53	TDZE 53
---------	---------



MIRL Rwy 8-26				
REIL Rwy 8 and 26				
CATEGORY	A	B	C	D
LNAV MDA	480-1	427 (500-1)		NA
CIRCLING	520-1	467 (500-1)		NA

NE-2, 12 SEP 2019 to 10 OCT 2019

NE-2, 12 SEP 2019 to 10 OCT 2019