

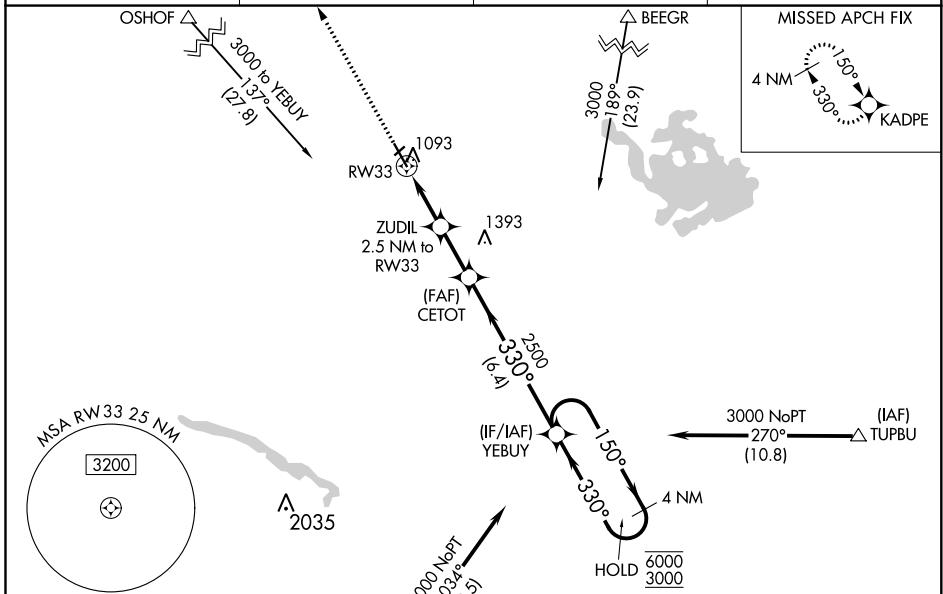
WAAS CH <b>56631</b> <b>W33A</b>	APP CRS <b>330°</b>	Rwy Idg <b>5401</b> TDZE <b>1011</b> Apt Elev <b>1011</b>
--	------------------------	---

# RNAV (GPS) RWY 33

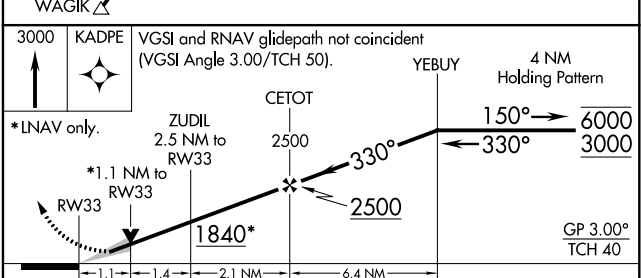
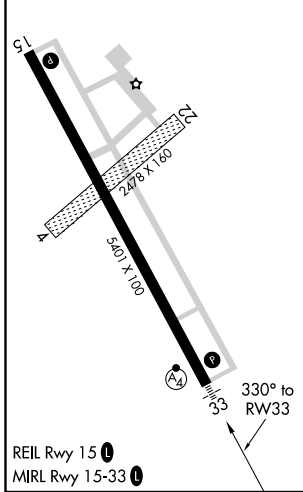
NEW ULM MUNI (ULM)

RNP APCH.	MALSF	MISSED APPROACH: Climb to 3000 direct KADPE and hold.
<p>⚠ Circling NA to Rwy 4 and 22. For uncompensated Baro-VNAV systems, LNAV/VNAV NA below -17°C or above 54°C. Inop table does not apply to LPV all Cats. For inop ALS, increase LNAV/VNAV all Cats visibility to 7/5 SM, LNAV Cat D to 1 1/8 SM.</p>		

AWOS-3 <b>118.325</b>	MINNEAPOLIS CENTER <b>127.1 290.2</b>	GCO <b>121.725</b>	UNICOM <b>122.8 (CTAF)</b>
--------------------------	--	-----------------------	-------------------------------



ELEV 1011	TDZE 1011
-----------	-----------



CATEGORY	A	B	C	D
LPV DA		1211-3/4	200 (200-3/4)	
LNAV/VNAV DA		1312-3/4	301 (400-3/4)	
LNAV MDA	1400-3/4	389 (400-3/4)	1400-7/8	389 (400-7/8)
<input checked="" type="checkbox"/> CIRCLING	1440-1 429 (500-1)	1500-1 489 (500-1)	1620-1 3/4 609 (700-1 3/4)	1620-2 609 (700-2)

NC-1, 25 FEB 2021 to 25 MAR 2021

NC-1, 25 FEB 2021 to 25 MAR 2021