

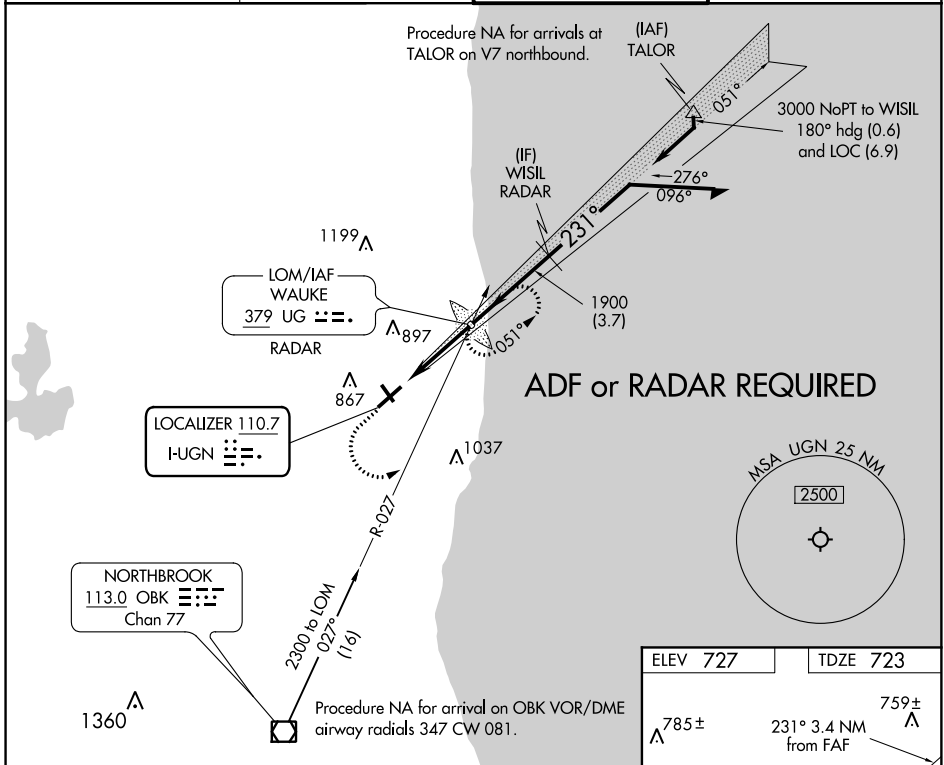
LOC I-UGN 110.7	APP CRS 231°	Rwy Idg TDZE Apt Elev	5999 723 727
---------------------------	------------------------	-----------------------------	---

ILS or LOC RWY 23

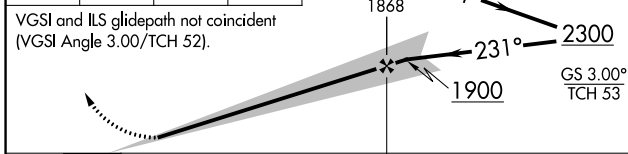
WAUKEGAN NATIONAL (UGN)

<p>Circling to Rwy 14, 32 NA at night. ADF or RADAR required.</p>	<p>MALS R</p>	<p>MISSED APPROACH: Climb to 1600 then climbing left turn to 2300 to intercept OBK VOR/DME R-027 to WAUKE LOM/RADAR and hold.</p>
---	---------------	---

<p>ATIS 132.4</p>	<p>CHICAGO APP CON 120.55</p>	<p>WAUKEGAN TOWER ★ 120.05 (CTAF) 273.55</p>	<p>GND CON 121.65</p>
------------------------------	--	---	----------------------------------



1600	2300	OBK R-027	UG	WAUKE LOM/RADAR	Remain within 10 NM
------	------	-----------	----	-----------------	---------------------



CATEGORY	A	B	C	D
S-ILS 23		923-1/2	200 (200-1/2)	
S-LOC 23		1040-1/2	317 (400-1/2)	
CIRCLING	1220-1	493 (500-1)	1220-1 1/2 493 (500-1/2)	1400-2 1/4 673 (700-2 1/4)

ELEV 727	TDZE 723
----------	----------

785±

231° 3.4 NM from FAF

759±

051°

231°

2300

5999 Y 150

02° 32'

TWR

757±

HIRL Rwy 5-23

MIRL Rwy 14-32

FAF to MAP 3.4 NM					
Knots	60	90	120	150	180
Min:Sec	3:24	2:16	1:42	1:21	1:08

EC-3, 07 NOV 2019 to 05 DEC 2019

EC-3, 07 NOV 2019 to 05 DEC 2019