

VORTAC BAE 116.4 Chan 111	APP CRS 153°	Rwy Idg TDZE Apt Elev N/A N/A 911
---	------------------------	---

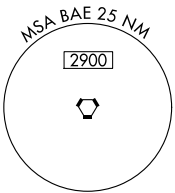
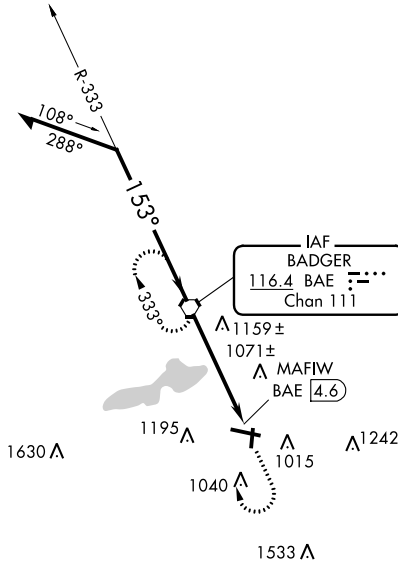
VOR-A

WAUKESHA COUNTY (U/S)

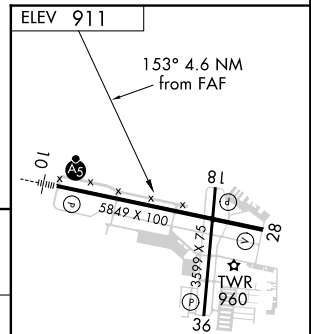
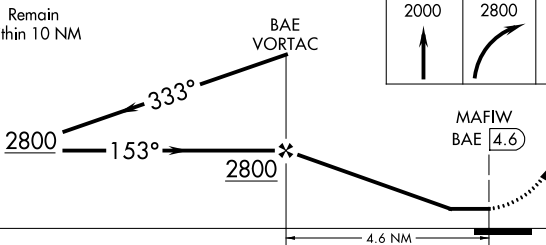
⚠ When local altimeter setting not received, use Lawrence J Timmerman altimeter setting and increase all MDA 60 feet, increase Circling Cat D visibility ¼ mile.

MISSED APPROACH: Climb to 2000, then climbing right turn to 2800 direct BAE VORTAC and hold.

ATIS 118.875	MILWAUKEE APP CON 125.35 307.0	WAUKESHA TOWER ★ 123.7 (CTAF)	GND CON 121.6	CLNC DEL 121.6	CLNC DEL 128.7 (When twr closed)	UNICOM 122.95
------------------------	--	---	-------------------------	--------------------------	---	-------------------------



Remain within 10 NM



HIRL Rwy 10-28
MIRL Rwy 18-36
REIL Rwy 18, 28 and 36

CATEGORY	A	B	C	D	FAF to MAP 4.6 NM					
CIRCLING	1460-1 549 (600-1)	1480-1 569 (600-1)	1520-1¾ 609 (700-1¾)	1600-2¼ 689 (700-2¼)	Knots	60	90	120	150	180
					Min:Sec	4:36	3:04	2:18	1:50	1:32

VOR-A

EC-3, 25 FEB 2021 to 25 MAR 2021

EC-3, 25 FEB 2021 to 25 MAR 2021