

APP CRS	Rwy Idg	<b>5849</b>
<b>270°</b>	TDZE	<b>906</b>
	Apt Elev	<b>911</b>

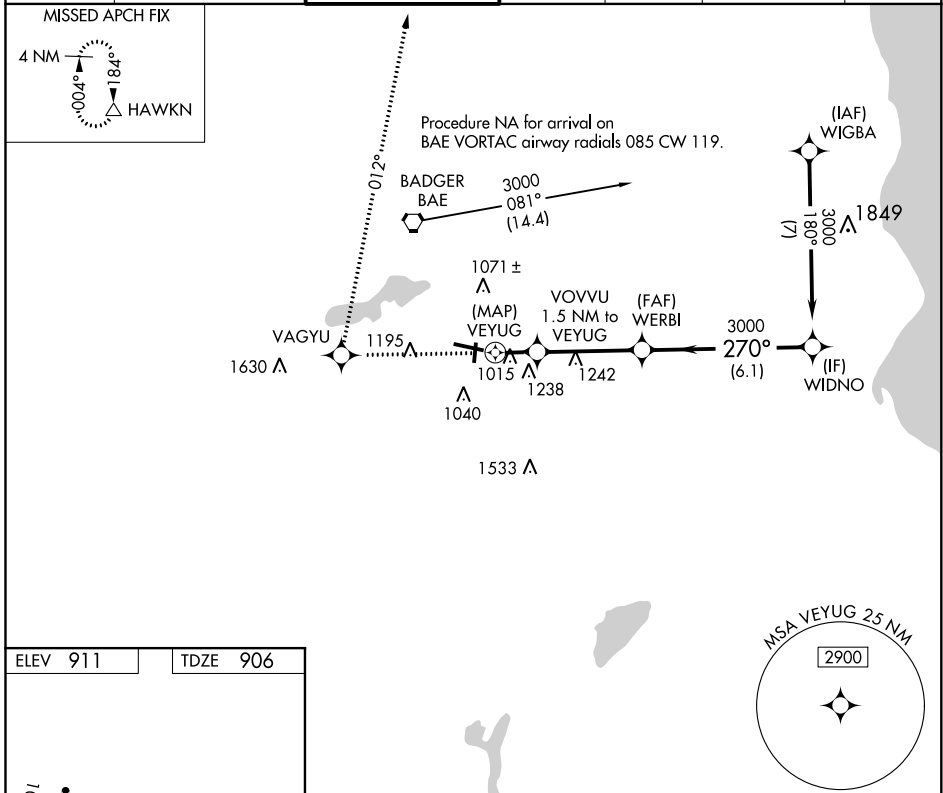
# RNAV (GPS) RWY 28

WAUKESHA COUNTY (UES)

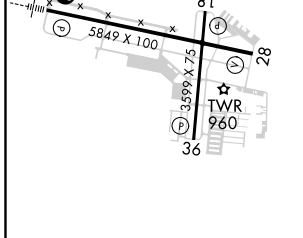
**▽** DME/DME RNP-0.3 NA. Visibility reduction by helicopters NA. When local altimeter setting not received, use Lawrence J Timmerman altimeter setting and increase all MDA 60 feet, increase Circling Cat C and D visibility ¼ mile.

**△** MISSED APPROACH: Climb to 3000 direct VAGYU and right turn via 012° track to HAWKN and hold.

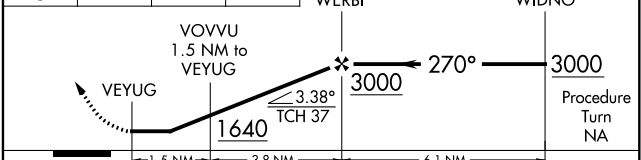
ATIS <b>118.875</b>	MILWAUKEE APP CON <b>125.35 307.0</b>	WAUKESHA TOWER ★ <b>123.7 (CTAF) 0</b>	GND CON <b>121.6</b>	CLNC DEL <b>121.6</b>	CLNC DEL <b>128.7</b> (When twr closed)	UNICOM <b>122.95</b>
------------------------	--	---	-------------------------	--------------------------	---	-------------------------



ELEV 911	TDZE 906
----------	----------



3000 ↑	VAGYU	HAWKN tr 012°	VGSI and descent angles not coincident (VGSI Angle 3.75/TCH 37).
--------	-------	---------------	--



CATEGORY	A	B	C	D
LNAV MDA	1420-1	514 (600-1)	1420-1½ 514 (600-1½)	1420-1¾ 514 (600-1¾)
CIRCLING	1460-1 549 (600-1)	1480-1 569 (600-1)	1520-1¾ 609 (700-1¾)	1600-2¼ 689 (700-2¼)

HIRL Rwy 10-28 **1**  
MIRL Rwy 18-36 **1**  
REIL Rwy 18, 28 and 36 **1**

EC-3, 25 FEB 2021 to 25 MAR 2021

EC-3, 25 FEB 2021 to 25 MAR 2021