

WAAS CH 90521 W24A	APP CRS 241°	Rwy Idg TDZE Apf Elev	4400 1073 1073
--	------------------------	-----------------------------	---

RNAV (GPS) RWY 24

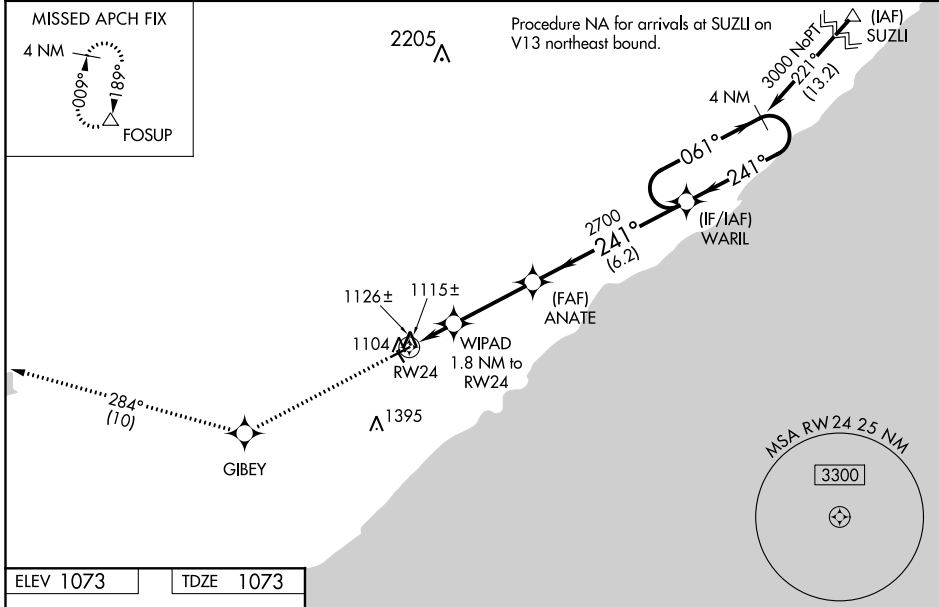
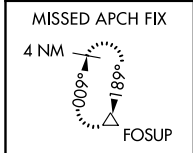
RICHARD B HELGESON (TWM)

RNP APCH.

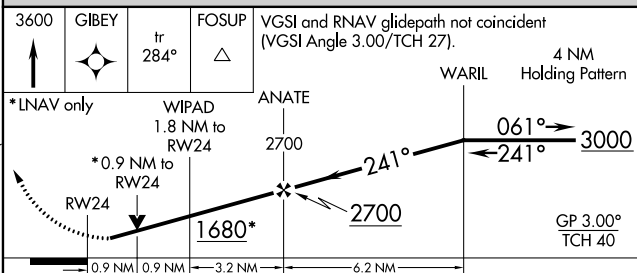
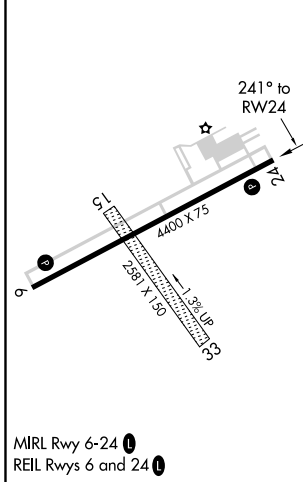
Baro-VNAV NA when using Silver Bay Muni altimeter setting. For uncompensated Baro-VNAV systems, LNAV/VNAV NA below -17°C or above 54°C. When local altimeter setting not received, use Silver Bay Muni altimeter setting and increase all DA 44 feet and all MDA 60 feet. Increase LPV and LNAV/VNAV Cats A/B visibility 1/8 mile. Rwy 24 helicopter visibility reduction below 3/4 SM NA. VDP NA with Silver Bay Muni altimeter setting. Circling to Rwy 15, 33 NA.

MISSED APPROACH: Climb to 3600 direct GIBEY and on track 284° to FOSUP and hold.

AWOS-3 119.325	DULUTH APP CON 125.45 233.7	GCO 121.725	CTAF 122.9
--------------------------	---------------------------------------	-----------------------	----------------------



ELEV 1073	TDZE 1073
-----------	-----------



CATEGORY	A	B	C	D
LPV DA	1323-7/8	250 (300-7/8)		NA
LNAV/VNAV DA	1323-7/8	250 (300-7/8)		NA
LNAV MDA	1380-1	307 (400-1)		NA
CIRCLING	1600-1 527 (600-1)	1680-1 607 (700-1)		NA

NC-1, 28 JAN 2021 to 25 FEB 2021

NC-1, 28 JAN 2021 to 25 FEB 2021