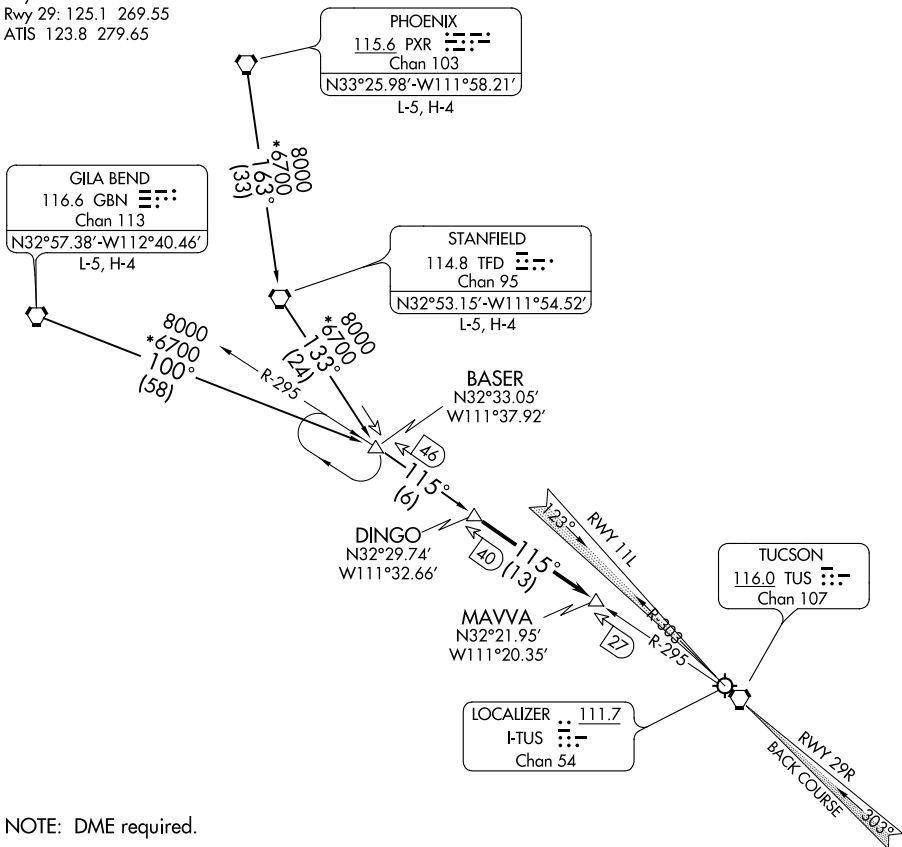


DINGO FIVE ARRIVAL

ST-430 (FAA)

TUCSON INTL (TUS)
TUCSON, ARIZONA

TUCSON APP CON
Rwy 11: 119.4 318.1
Rwy 29: 125.1 269.55
ATIS 123.8 279.65



SW-4, 29 MAR 2018 to 26 APR 2018

SW-4, 29 MAR 2018 to 26 APR 2018

NOTE: DME required.

NOTE: Chart not to scale.

ARRIVAL ROUTE DESCRIPTION

GILA BEND TRANSITION (GBN.DINGO5): From over GBN VORTAC via GBN R-100 to BASER INT, then via TUS R-295 to DINGO INT. Thence....

PHOENIX TRANSITION (PXR.DINGO5): From over PXR VORTAC via PXR R-163 to TFD VORTAC. Then via TFD R-133 to BASER INT. Then via TUS R-295 to DINGO INT. Thence....

STANFIELD TRANSITION (TFD.DINGO5): From over TFD VORTAC via TFD R-133 to BASER INT. Then via TUS R-295 to DINGO INT. Thence....

....From over DINGO INT via TUS R-295 to MAVVA INT. Thence, for Runway 11L via heading 075° to intercept I-TUS localizer or TUS VORTAC R-303, and expect approach clearance for Rwy 11L. For Runway 29R expect RADAR vectors to final approach course Runway 29R.

DINGO FIVE ARRIVAL