

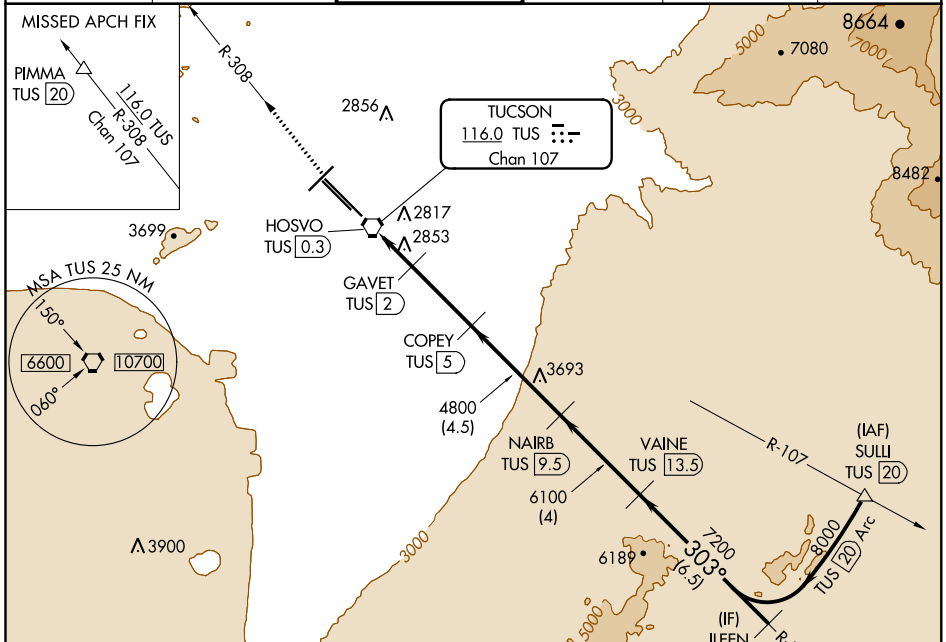
VORTAC TUS <b>116.0</b> Chan <b>107</b>	APP CRS <b>303°</b>	Rwy Idg <b>10996</b> TDZE <b>2643</b> Apt Elev <b>2643</b>
---	------------------------	--

# VOR/DME or TACAN RWY 29R

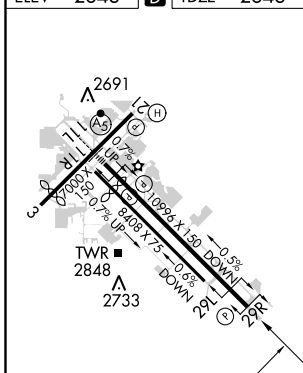
TUCSON INTL (TUS)

**▼** Visibility reduction by helicopters NA. MISSED APPROACH: Climb to 6500 to PIMMA/TUS 20 DME on TUS R-308.

ATIS <b>123.8 279.65</b>	TUCSON APP CON <b>119.4 318.1</b>	TUCSON TOWER <b>118.3 257.8</b>	GND CON <b>124.4 348.6</b>	CLNC DEL <b>126.65 326.2</b>	CTAF <b>125.8</b>
-----------------------------	--------------------------------------	------------------------------------	-------------------------------	---------------------------------	----------------------



ELEV 2643	<b>D</b>	TDZE 2643
-----------	----------	-----------



HIRL Rwy 11L-29R	MIRL Rwy 3-21 and 11R-29L	REIL Rwy 21, 29L and 29R
------------------	---------------------------	--------------------------

6500 TUS R-308	PIMMA △	VGSI and descent angles not coincident (VGSI Angle 3.00/TCH 80).	VAINE TUS 13.5	ILEEN TUS 20
TUS VORTAC	HOSVO TUS 0.3	GAVET TUS 2	COPEY TUS 5	NAIRB TUS 9.5
				VAINE TUS 13.5
				ILEEN TUS 20
				Procedure Turn NA

CATEGORY	A	B	C	D	E
S-29R	3120-1	477 (500-1)	3120-1¼ 477 (500-1¼)	3120-1½ 477 (500-1½)	3120-1¾ 477 (500-1¾)
CIRCLING	3120-1 477 (500-1)	3220-1 577 (600-1)	3220-1½ 577 (600-1½)	3220-2 577 (600-2)	3800-3 1157 (1200-3)

SW-4, 04 JAN 2018 to 01 FEB 2018

SW-4, 04 JAN 2018 to 01 FEB 2018