

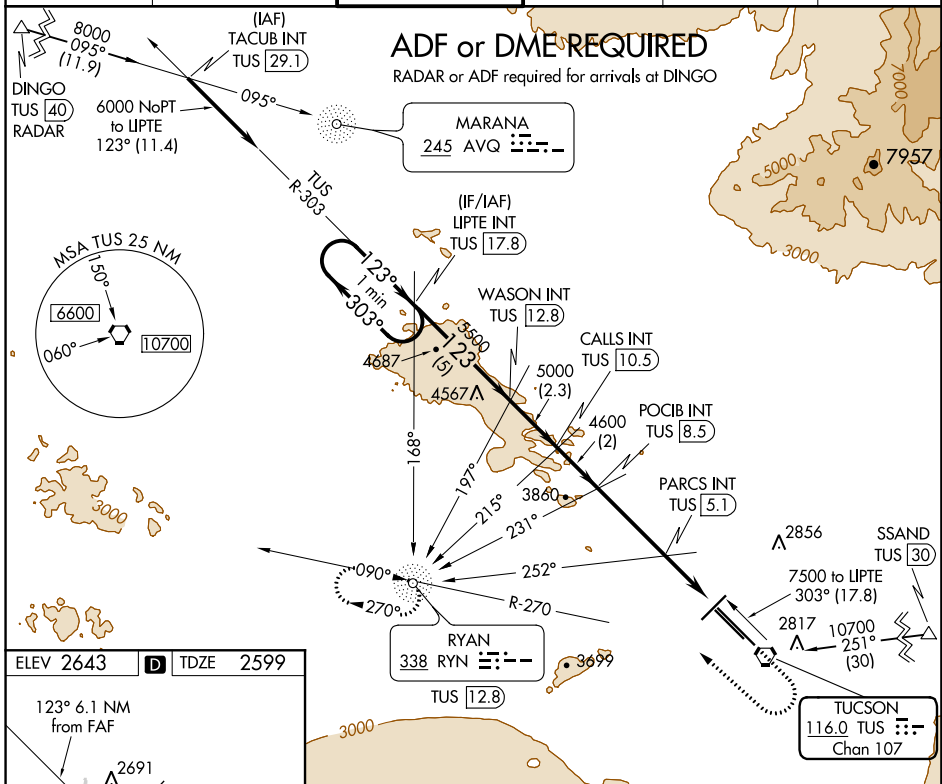
VORTAC TUS 116.0 Chan 107	APP CRS 123°	Rwy Idg 10996 TDZE 2599 Apt Elev 2643
---	------------------------	--

VOR or TACAN RWY 11L

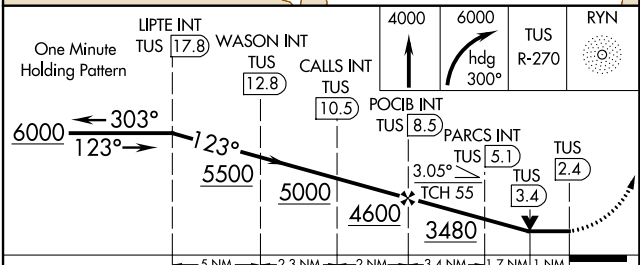
TUCSON INTL (TUS)

<p>▼ For inoperative MALSR, increase S-11L Cats D and E visibility to RVR 6000. ▲ ADF or DME required.</p>	<p>MALSR </p>	<p>MISSED APPROACH: Climb to 4000 then climbing right turn to 6000 (Cat E 8000) via heading 300° and TUS R-270 to RYN NDB/TUS 12.8 DME and hold.</p>
--	-------------------	--

ATIS 123.8 279.65	TUCSON APP CON 119.4 318.1	TUCSON TOWER 118.3 257.8	GND CON 124.4 348.6	CLNC DEL 126.65 326.2	CTAF 125.8
-----------------------------	--------------------------------------	------------------------------------	-------------------------------	---------------------------------	----------------------



ELEV 2643	D	TDZE 2599			
123° 6.1 NM from FAF					
HIRL Rwy 11L-29R					
MIRL Rwy 3-21 and 11R-29L					
REIL Rwy 21, 29L and 29R					
FAF to MAP 6.1 NM					
Knots	60	90	120	150	180
Min:Sec	6:06	4:04	3:03	2:26	2:02



CATEGORY	A	B	C	D	E
S-11L	2960/24	361 (400-½)		2960/50	361 (400-1)
CIRCLING	3100-1 457 (500-1)	3220-1 577 (600-1)	3220-1½ 577 (600-1½)	3220-2 577 (600-2)	3740-3 1097 (1100-3)

SW-4, 07 DEC 2017 to 04 JAN 2018

SW-4, 07 DEC 2017 to 04 JAN 2018