

WAAS CH <b>86899</b> <b>W29A</b>	APP CRS <b>303°</b>	Rwy Idg <b>10996</b> TDZE <b>2643</b> Apt Elev <b>2643</b>
--	------------------------	--

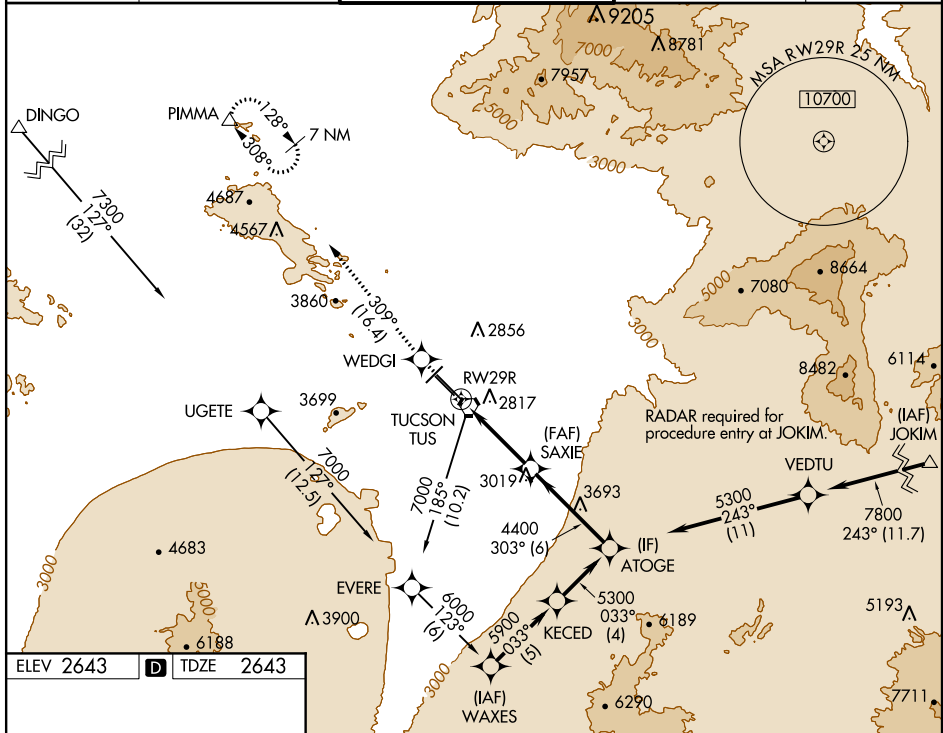
# RNAV (GPS) Z RWY 29R

TUCSON INTL (TUS)

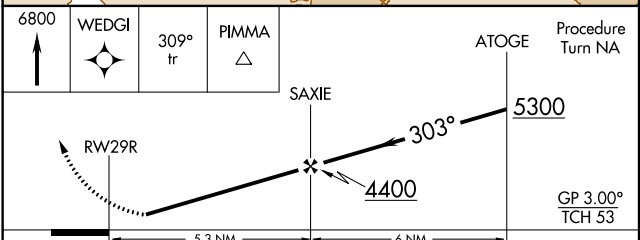
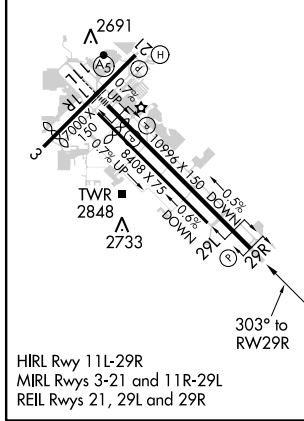
**▼** For uncompensated Baro-VNAV systems, LNAV/VNAV NA below -20°C (-4°F) or above 43°C (111°F). DME/DME RNP-0.3 NA.  
**▲** When VGSI inoperative, procedure NA at night.

MISSED APPROACH: Climb to 6800 direct WEDGI and 309° track to PIMMA and hold.

ATIS <b>123.8 279.65</b>	TUCSON APP CON <b>119.4 318.1</b>	TUCSON TOWER <b>118.3 257.8</b>	GND CON <b>124.4 348.6</b>	CLNC DEL <b>126.65 326.2</b>
-----------------------------	--------------------------------------	------------------------------------	-------------------------------	---------------------------------



ELEV 2643	<b>D</b>	TDZE 2643
-----------	----------	-----------



CATEGORY	A	B	C	D	E
LPV DA	2929-1 286 (300-1)				
LNAV/VNAV DA	3106-1½ 463 (500-1½)			3106-1¼ 463 (500-1¾)	
LNAV MDA	3280-1 637 (700-1)	3280-1¾ 637 (700-1¾)	3280-2 637 (700-2)	3280-2½ 637 (700-2½)	
CIRCLING	3280-1 637 (700-1)	3280-1¾ 637 (700-1¾)	3280-2 637 (700-2)	3740-3 1097 (1100-3)	

SW-4, 01 MAR 2018 to 29 MAR 2018

SW-4, 01 MAR 2018 to 29 MAR 2018