

APP CRS	Rwy Idg	6998
303°	TDZE	2629
	Apt Elev	2643

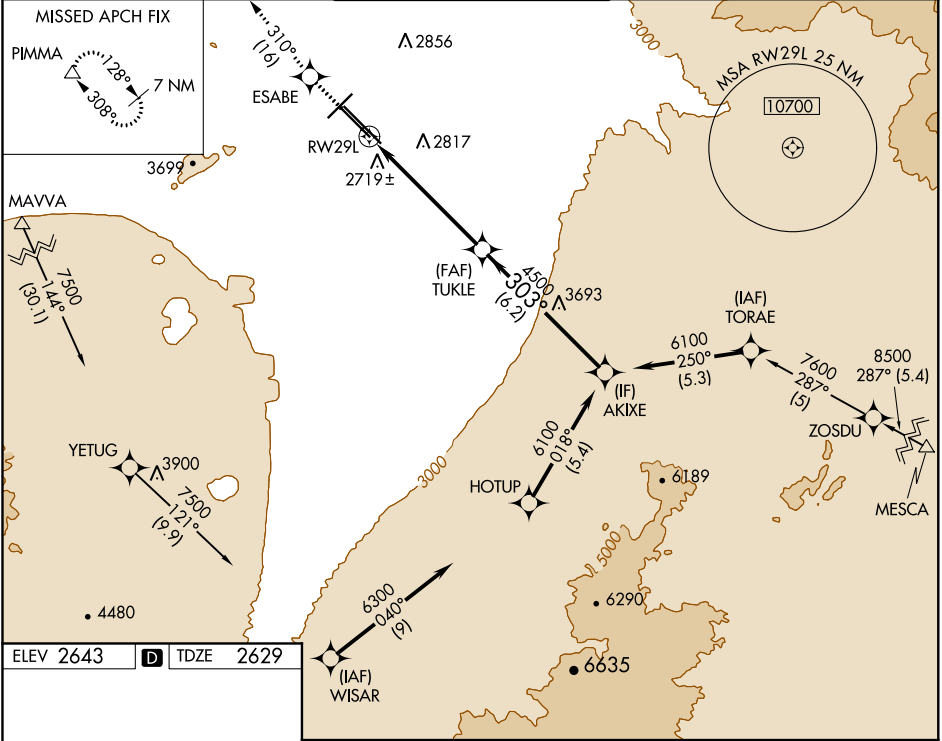
RNAV (GPS) RWY 29L

TUCSON INTL (TUS)

▽ For uncompensated Baro-VNAV systems, LNAV/VNAV NA below -20°C (-4°F) or above 27°C (80°F). DME/DME RNP-0.3 NA. Helicopter visibility reduction below ¾ SM NA.

MISSED APPROACH: Climb to 6500 direct ESABE then climbing right turn on track 310° to PIMMA and hold.

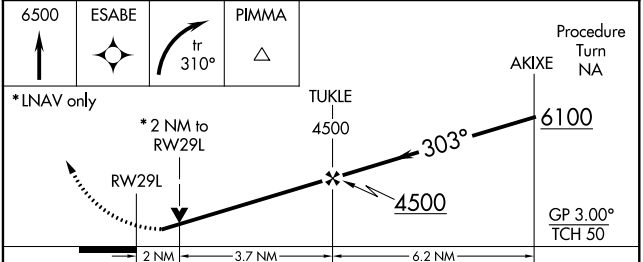
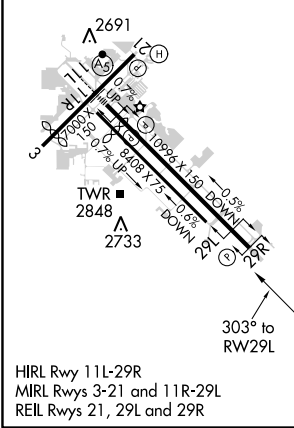
ATIS 123.8 279.65	TUCSON APP CON 119.4 318.1	TUCSON TOWER 118.3 257.8	GND CON 124.4 348.6	CLNC DEL 126.65 326.2
-----------------------------	--------------------------------------	------------------------------------	-------------------------------	---------------------------------



SW-4, 01 MAR 2018 to 29 MAR 2018

SW-4, 01 MAR 2018 to 29 MAR 2018

ELEV 2643	D	TDZE 2629
-----------	----------	-----------



CATEGORY	A	B	C	D
LNAV/ VNAV DA	3040-1 3/8 411 (400-1 3/8)			
LNAV MDA	3320-1	691 (700-1)	3320-2	691 (700-2)
CIRCLING	3320-1	677 (700-1)	3320-2	3320-2 1/4 677 (700-2 1/4)