


APP CRS	Rwy Idg	6006
058°	TDZE	186
	Apt Elev	212

RNAV (RNP) Y RWY 6

TRENTON MERCER (TTN)

▽ For uncompensated Baro-VNAV systems, procedure NA below -13°C (8°F) or above 54°C (130°F). GPS required. For inoperative MALSR, increase RNP 0.10 DA all Cats visibility to 1 mile, increase RNP 0.30 DA all Cats visibility to 1½ mile.

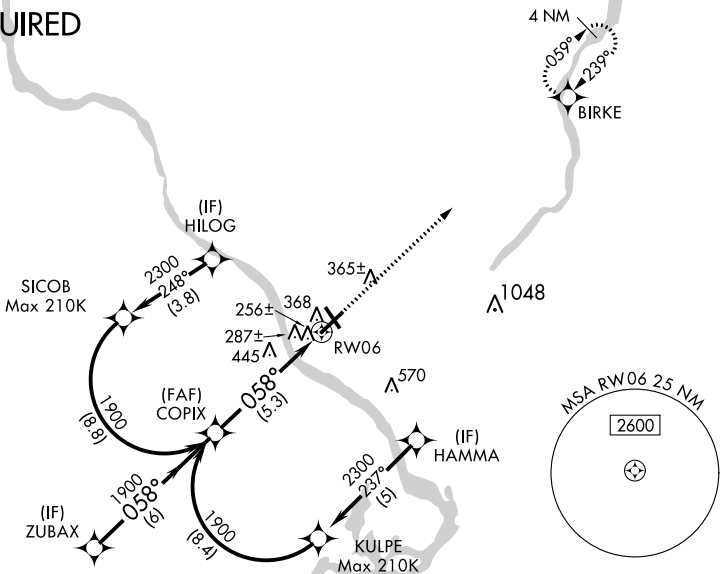
MALSR



MISSED APPROACH:
Climb to 2600 direct BIRKE and hold.

ATIS	PHILADELPHIA	APP CON	TRENTON TOWER ★	GND CON	CLNC DEL	UNICOM
126.775	123.8	291.7	120.7 (CTAF) 0 257.8	121.9 257.8	121.9 257.8	122.95

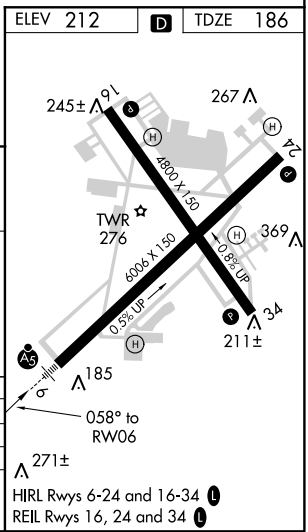
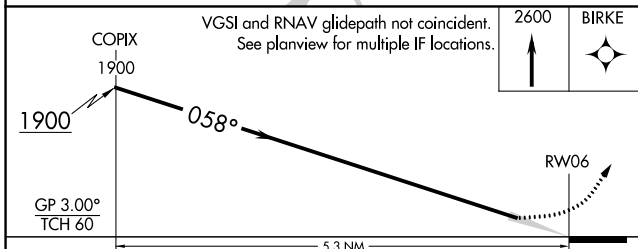
RADAR REQUIRED



NE-2, 26 APR 2018 to 24 MAY 2018

NE-2, 26 APR 2018 to 24 MAY 2018

ELEV 212	D	TDZE 186
----------	----------	----------



CATEGORY	A	B	C	D
RNP 0.10 DA		510-½	324 (300-½)	
RNP 0.30 DA		668-1½	482 (500-1½)	

AUTHORIZATION REQUIRED