

LOC I-TTN <b>111.3</b>	APP CRS <b>058°</b>	Rwy Idg <b>6006</b>	TDZE <b>186</b>
		Apt Elev <b>212</b>	

# ILS or LOC RWY 6

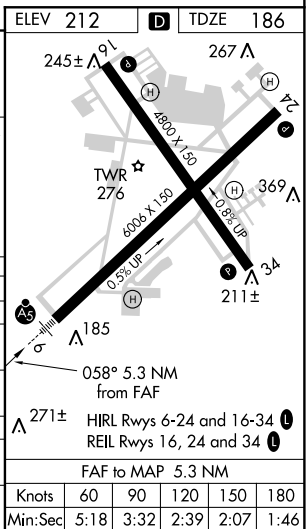
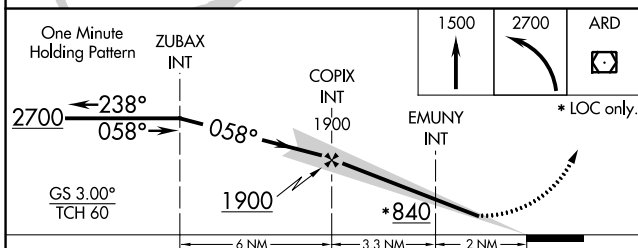
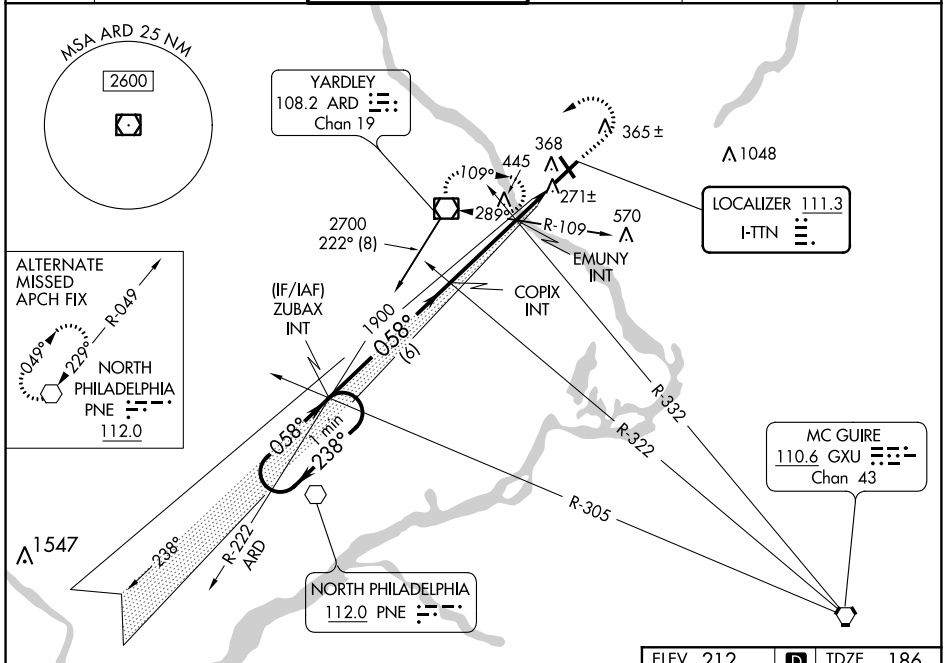
TRENTON MERCER (T'N)

▼ When local altimeter not received use Northeast Philadelphia altimeter setting: increase DA to 435; increase all MDA 40 feet and visibility Cat C and D ½ mile. Night Landing: Rwy 34 operational VGSJ required, remain on or above VGSJ glidepath until threshold.

⚠ MISLSR

MISSED APPROACH: Climb to 1500 then climbing left turn to 2700 direct ARD VOR/DME and hold.

ATIS <b>126.775</b>	PHILADELPHIA APP CON <b>123.8 291.7</b>	TRENTON TOWER ★ <b>120.7 (CTAF) 257.8</b>	GND CON <b>121.9 257.8</b>	CLNC DEL <b>121.9 257.8</b>	UNICOM <b>122.95</b>
------------------------	--	--	-------------------------------	--------------------------------	-------------------------



CATEGORY	A	B	C	D
S-ILS 6	414-½ 228 (300-½)			
S-LOC 6	840-½ 654 (700-½)	840-1¾ 654 (700-1¾)		
CIRCLING	840-1 628 (700-1)	840-1½ 628 (700-1½)	840-2 628 (700-2)	
EMUNY FIX MINIMUMS (DUAL VOR RECEIVERS REQUIRED)				
S-LOC 6	540-½ 354 (400-½)	540-5/8 354 (400-5/8)		
CIRCLING	680-1 468 (500-1)	680-1½ 468 (500-1½)	780-2 568 (600-2)	

NE-2. 01 FEB 2018 to 01 MAR 2018

NE-2. 01 FEB 2018 to 01 MAR 2018