

WAAS CH <b>99626</b> <b>W18A</b>	APP CRS <b>176°</b>	Rwy Idg <b>3907</b> TDZE <b>757</b> Apt Elev <b>758</b>
--	------------------------	---

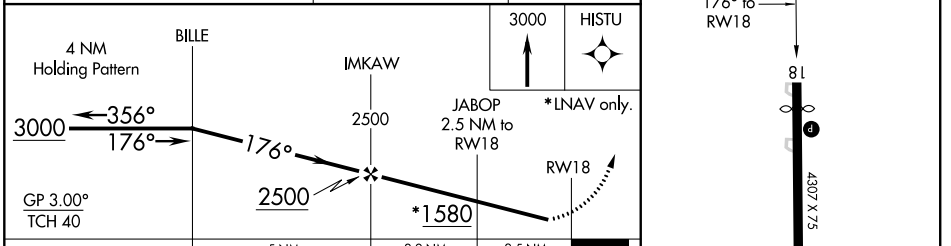
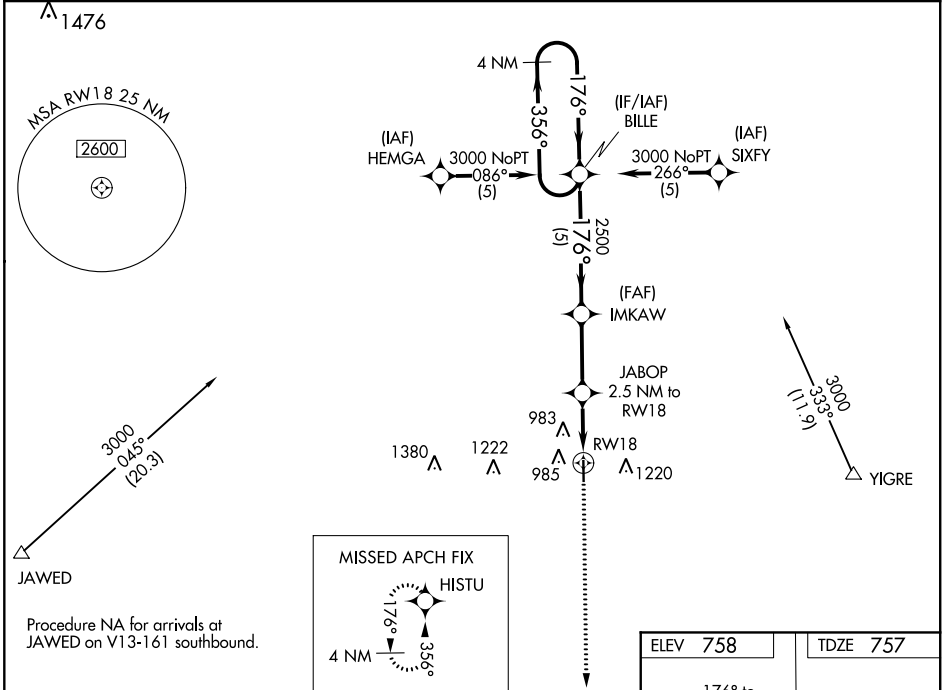
# RNAV (GPS) RWY 18

TRENTON MUNI (TRX)

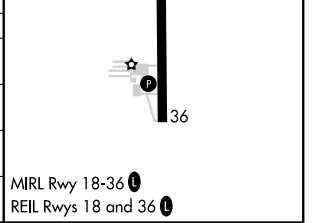
**▼** Baro-VNAV NA. Use Chillicothe altimeter setting, when not received, use Kirksville altimeter setting and increase all DA 93 feet and all MDA 100 feet. Increase LPV visibility  $\frac{3}{8}$  mile all Cats and LNAV/VNAV  $\frac{1}{4}$  all Cats. DME/DME RNP-0.3 NA.  
**▲ NA** Helicopter visibility reduction below  $\frac{3}{4}$  SM NA.

MISSED APPROACH: Climb to 3000 direct HISTU and hold.

KANSAS CITY CENTER <b>125.25 235.975</b>	UNICOM <b>122.8 (CTAF) 0</b>
---	---------------------------------



CATEGORY	A	B	C	D
LPV DA	1098-1 $\frac{1}{8}$	341 (400-1 $\frac{1}{8}$ )		NA
LNAV/VNAV DA	1248-1 $\frac{3}{4}$	491 (500-1 $\frac{3}{4}$ )		NA
LNAV MDA	1180-1	423 (500-1)		NA
CIRCLING	1340-1	582 (600-1)		NA



NC-3, 09 SEP 2021 to 07 OCT 2021

NC-3, 09 SEP 2021 to 07 OCT 2021