

WAAS CH 99399 W07A	APP CRS 072°	Rwy Idg TDZE Apt Elev	10599 683 683
--	------------------------	-----------------------------	--

RNAV (GPS) RWY 7

TOLEDO EXPRESS (TOL)

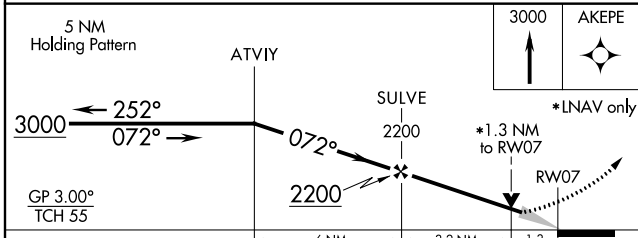
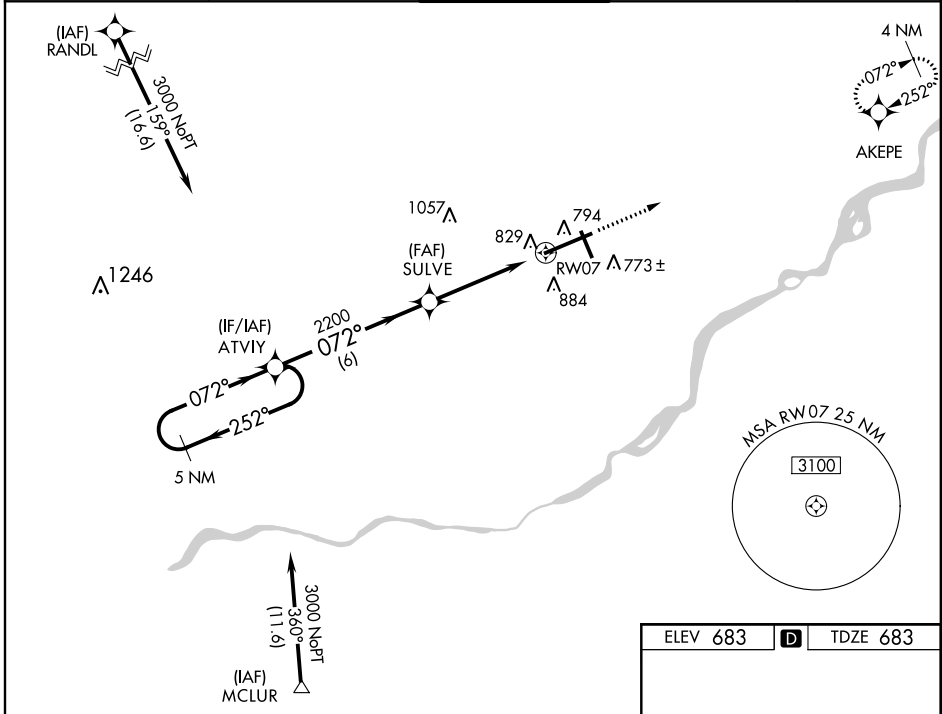
⚠ For uncompensated Baro-VNAV systems, LNAV/VNAV NA below -17°C (2°F) or above 54°C (130°F). DME/DME RNP-0.3 NA. For inop ALS, increase LPV all Cats visibility to RVR 5000, LNAV/VNAV Cat E visibility to 1½ SM, increase LNAV Cat E visibility to 1¾ SM.

ASR

ALSIF-2

MISSED APPROACH:
Climb to 3000 direct AKEPE and hold.

ATIS 118.75 290.225	TOLEDO APP CON 134.35 317.55	TOLEDO TOWER 118.1 285.4	GND CON 121.9 348.6	CLNC DEL 121.75 348.6
-------------------------------	--	------------------------------------	-------------------------------	---------------------------------



CATEGORY	A	B	C	D	E
LPV DA	1018/40 335 (400-¾)				
LNAV/VNAV DA	1129/50 446 (500-1)				
LNAV MDA	1140/24	457 (500-½)	1140/40 457 (500-¾)	1140/50	457 (500-1)
C CIRCLING	1200-1	517 (600-1)	1360-2 677 (700-2)	1400-2¼ 717 (800-2¼)	1400-2½ 717 (800-2½)

ELEV 683 **D** TDZE 683

TWR 750, 91, 34, 35, 10599 X 150, 5599 X 150, 0.3% UP, 072° to RW07, TDZ/CL Rwy 7, HIRL Rwy 7-25, MIRL Rwy 16-34, REIL Rws 16 and 34.

EC-2, 12 SEP 2019 to 10 OCT 2019

EC-2, 12 SEP 2019 to 10 OCT 2019