

MINEE FIVE ARRIVAL
(MINEE.MINEE5) 13JAN11

ORLANDO, FLORIDA

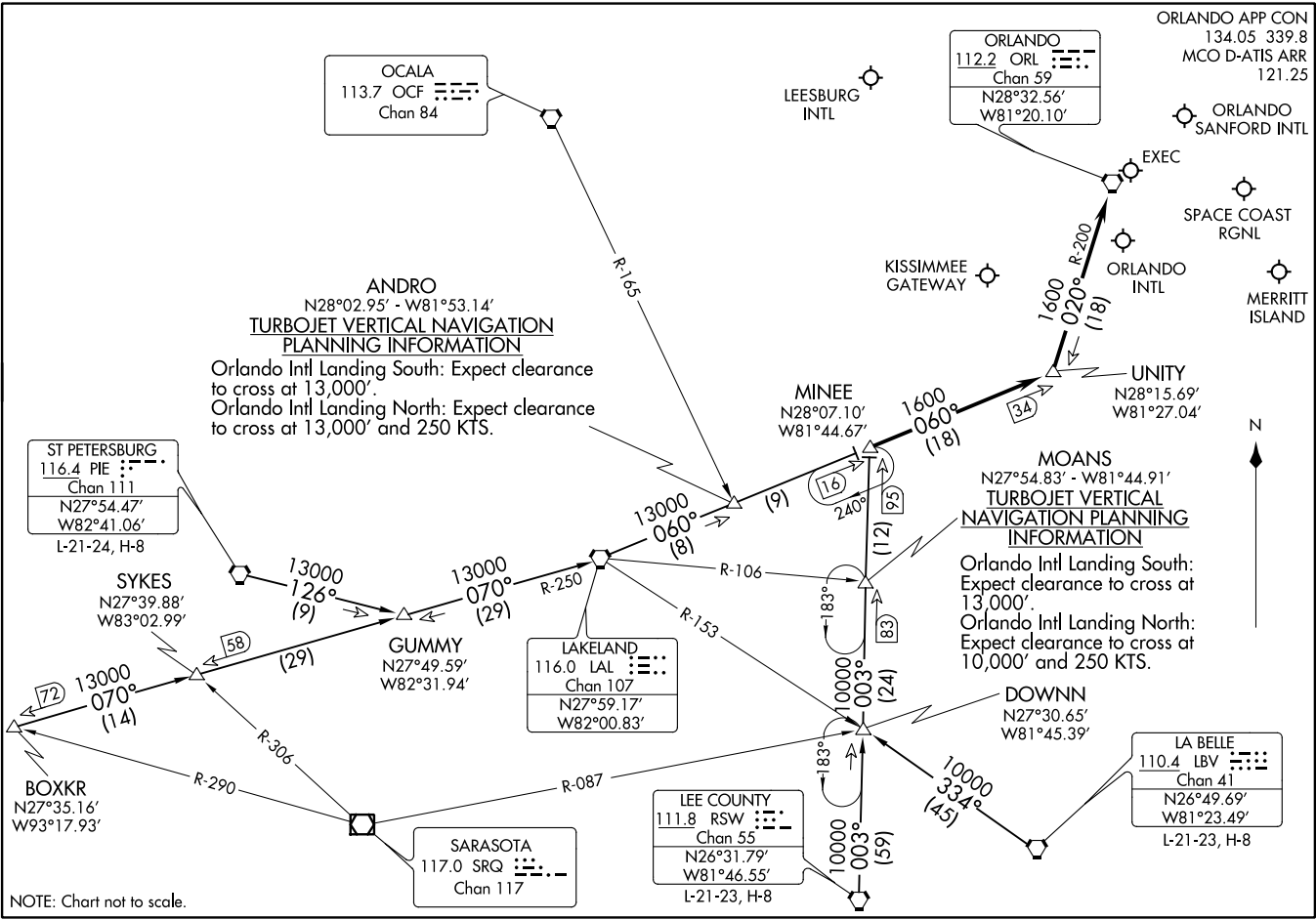
(MINEE.MINEE5) 21168
MINEE FIVE ARRIVAL

AL-571 (FAA)

ORLANDO, FLORIDA

SE-3, 17 JUN 2021 to 15 JUL 2021

SE-3, 17 JUN 2021 to 15 JUL 2021



ARRIVAL ROUTE DESCRIPTION

BOXKR TRANSITION (BOXKR.MINEE5): From over BOXKR INT via LAL R-250 to LAL VORTAC, then via LAL R-060 to MINEE INT. Thence. . . .

LA BELLE TRANSITION (LBV.MINEE5): From over LBV VORTAC via LBV R-334 to DOWNN INT, then via RSW R-003 to MINEE INT. Thence. . . .

LEE COUNTY TRANSITION (RSW.MINEE5): From over RSW VORTAC via RSW R-003 to MINEE INT. Thence. . . .

ST. PETERSBURG TRANSITION (PIE.MINEE5): From over PIE VORTAC via PIE R-126 to GUMMY INT, then via LAL R-250 to LAL VORTAC, then via LAL R-060 to MINEE INT. Thence. . . .

. . . . From over MINEE INT via LAL R-060 to UNITY INT, then via ORL R-200 to ORL VORTAC.

LEESBURG INTL: Expect radar vectors to airport after UNITY INT.

ALL OTHER AIRPORTS: Expect radar vectors to final approach course after UNITY INT.

SE-3, 17 JUN 2021 to 15 JUL 2021

SE-3, 17 JUN 2021 to 15 JUL 2021