

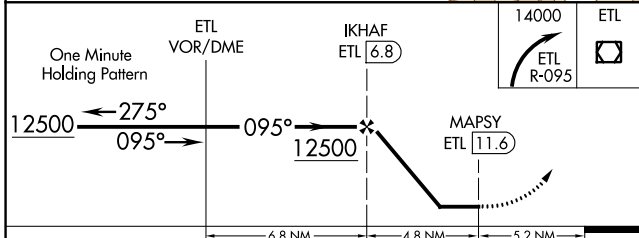
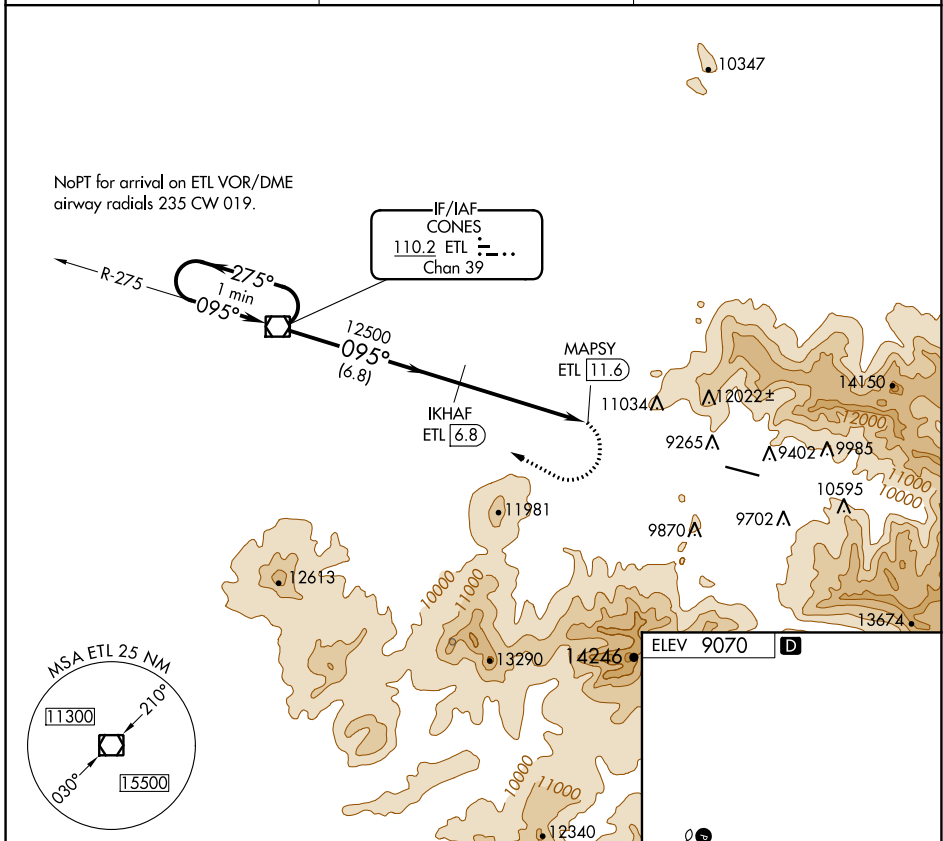
VOR/DME ETL <b>110.2</b> Chan <b>39</b>	APP CRS <b>095°</b>	Rwy Idg TDZE Apt Elev <b>N/A</b> <b>N/A</b> <b>9070</b>
---	------------------------	---

**VOR/DME-A**  
TELLURIDE RGNL (TEX)

**⚠** Circling NA north of Rwy 9-27.  
**❄** -18°C Procedure NA at night.

MISSED APPROACH: Immediate climbing right turn to 14000 via ETL VOR/DME R-095 to ETL VOR/DME and hold.

AWOS-3 <b>118.325</b>	DENVER CENTER <b>125.35 354.05</b>	UNICOM <b>123.0</b> (CTAF) <b>Ⓛ</b>
--------------------------	---------------------------------------	--



CATEGORY	A	B	C	D
<b>Ⓢ</b> CIRCLING	12420-6	3350 (3400-6)	NA	

ELEV 9070 **D**

HIRL Rwy 9-27 **Ⓛ**  
REIL Rwys 9 and 27 **Ⓛ**

SW-1, 25 FEB 2021 to 25 MAR 2021

SW-1, 25 FEB 2021 to 25 MAR 2021