

LOC/DME I-BAO 111.5 Chan 52	APP CRS 326°	Rwy Idg TDZE Apt Elev	6109 704 705
--	------------------------	-----------------------------	---

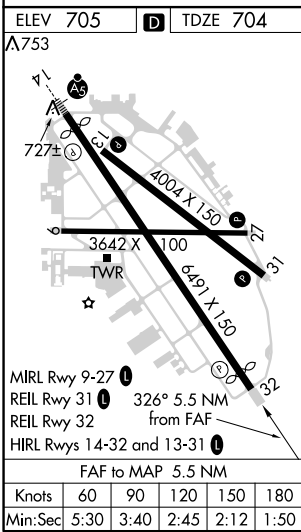
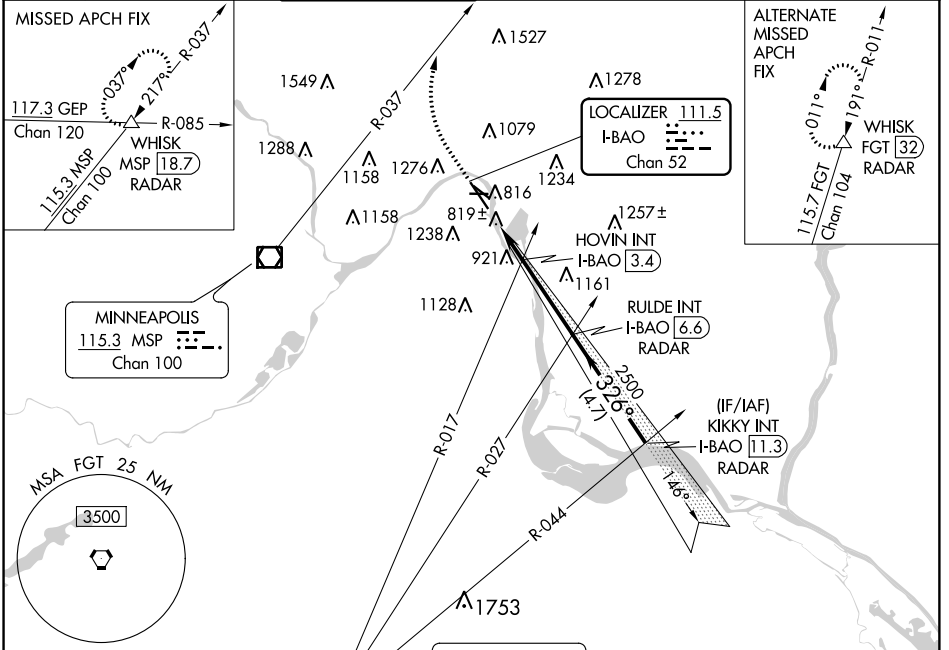
ILS or LOC RWY 32

ST PAUL DOWNTOWN HOLMAN FIELD (STP)

⚠ Rwy 32 helicopter visibility reduction below RVR 4000 NA. DME or RADAR required.

MISSED APPROACH: Climb to 1300 then climbing right turn to 4000 on heading 010° and MSP R-037 to WHISK INT/MSP 18.7 DME/RADAR and hold.

ATIS 118.35	MINNEAPOLIS APP CON 121.2 335.65	ST. PAUL TOWER ★ 119.1(CTAF) 257.8	GND CON 121.675	CLNC DEL 120.25	MINNEAPOLIS CLNC DEL 121.675 (when tower closed)	UNICOM 122.95
-----------------------	--	--	---------------------------	---------------------------	---	-------------------------



ELEV 705	TDZE 704				
1300	4000	MSP R-037	WHISK	RULDE INT I-BAO [6.6] RADAR	KIKKY INT I-BAO [11.3] RADAR
*LOC only		I-BAO [1.1]	*I-BAO [2.3]	HOVIN INT I-BAO [3.4]	2500
		1460*	1460	2500	2500
		1.2 NM	1.1 NM	3.2 NM	4.7 NM
CATEGORY	A	B	C	D	
S-ILS 32	1011/50 307 (400-1)				
S-LOC 32	1460/55 756 (800-1¼)	1460/60 756 (800-1¼)	1460-2	756 (800-2)	
C CIRCLING	1580-1¼	875 (900-1¼)	1580-2½ 875 (900-2½)	1580-2¾ 875 (900-2¾)	
HOVIN FIX MINIMUMS					
S-LOC 32	1140/55	436 (500-1¼)	1140-1¼	436 (500-1¼)	
C CIRCLING	1580-1¼	875 (900-1¼)	1580-2½ 875 (900-2½)	1580-2¾ 875 (900-2¾)	
FAF to MAP 5.5 NM					
Knots	60	90	120	150	180
Min:Sec	5:30	3:40	2:45	2:12	1:50

NC-1, 07 DEC 2017 to 04 JAN 2018

NC-1, 07 DEC 2017 to 04 JAN 2018