

WAAS CH 90323 W19A	APP CRS 187°	Rwy Idg TDZE 476 Apt Elev 489	5001 476 489
--	------------------------	---	---

RNAV (GPS) RWY 19

SULPHUR SPRINGS MUNI (SLR)

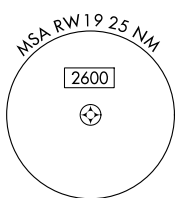
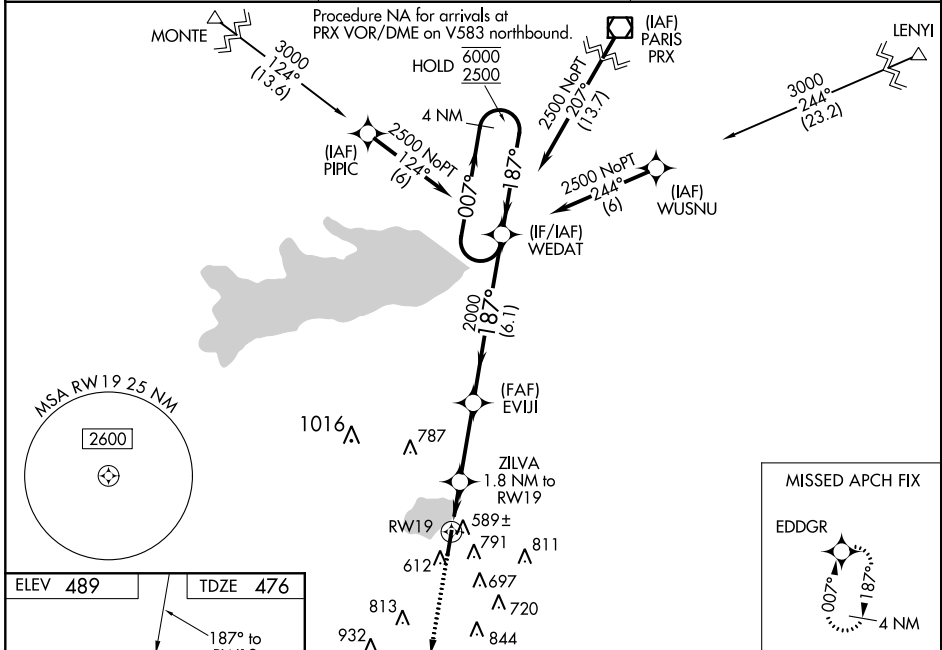
RNP APCH.

▼

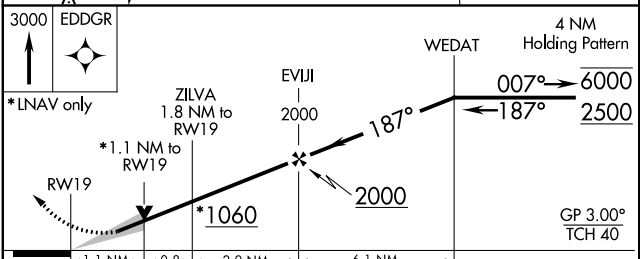
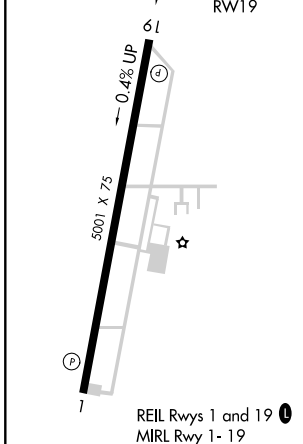
Circling to Rwy 1 NA at night. Circling NA east of Rwy 1-19. For uncompensated Baro-VNAV systems, procedure NA below -1.5°C or above 54°C.

MISSED APPROACH: Climb to 3000 direct EDDGR and hold.

AWOS-3 118.35	FORT WORTH CENTER 132.025 360.75	UNICOM 123.075 (CTAF) 0
-------------------------	--	-----------------------------------



ELEV 489	TDZE 476
----------	----------



CATEGORY	A	B	C	D
LPV DA		726-¾ 250 (300-¾)		NA
LNAV/VNAV DA		776-1 300 (300-1)		NA
LNAV MDA		840-1 364 (400-1)		NA
CIRCLING	920-1 431 (500-1)	940-1 451 (500-1)	940-1½ 451 (500-1½)	NA

WAAS CH 86324 W01A	APP CRS 007°	Rwy Idg TDZE Apt Elev	5001 489 489
---------------------------------	------------------------	-----------------------------	---

RNAV (GPS) RWY 1

SULPHUR SPRINGS MUNI (SLR)

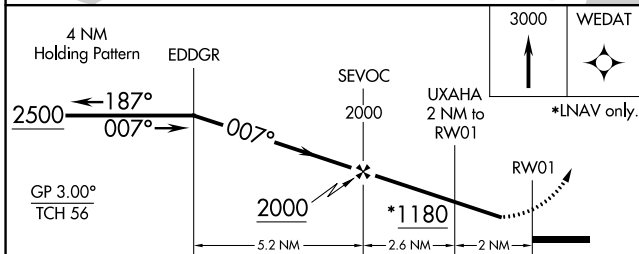
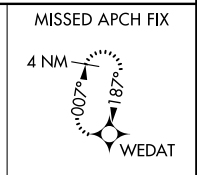
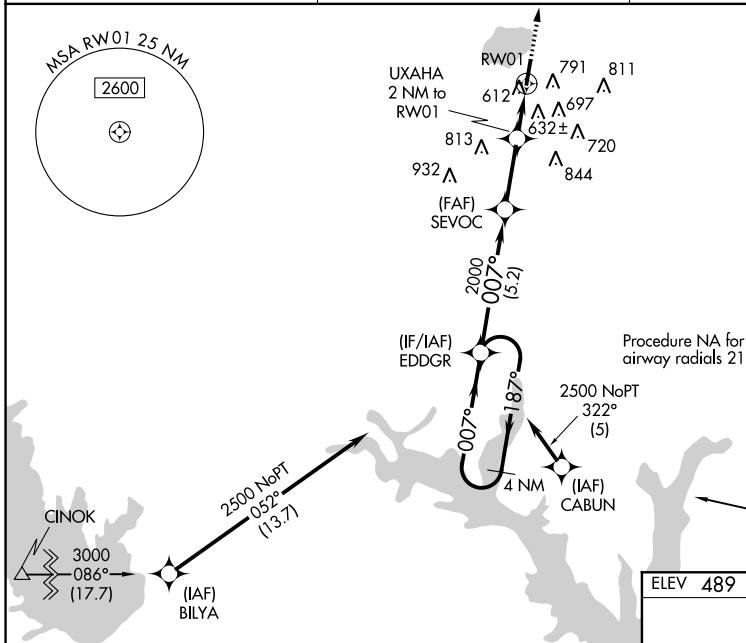
⚠ Baro-VNAV NA when using Paris altimeter setting. For uncompensated Baro-VNAV systems, LNAV/VNAV NA below -15°C (5°F) or above 54°C (130°F). When VGSI inop, Straight-in/Circling Rwy 1 procedure NA at night. Circling NA east of Rwy 1-19. DME/DME RNP-0.3 NA. Visibility reduction by helicopters NA. When local altimeter setting not received, use Paris altimeter setting and increase all DA 77 feet and all MDA 80 feet, increase LPV and LNAV/VNAV all Cats visibility ¼ mile, LNAV Cat C visibility ⅓ mile and Circling Cat C visibility ¼ mile.

MISSED APPROACH: Climb to 3000 direct WEDAT and hold.

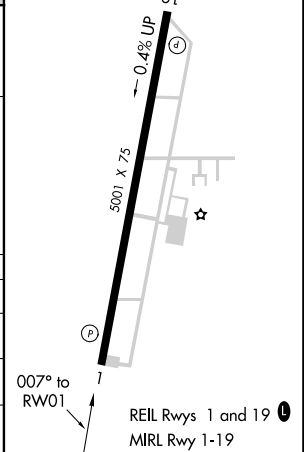
AWOS-3
118.35

FORT WORTH CENTER
132.025 360.75

UNICOM
123.075 (CTAF) **0**



ELEV 489	TDZE 489
----------	----------



CATEGORY	A	B	C	D
LPV DA	803-1	314 (400-1)		NA
LNAV/VNAV DA	975-1½	486 (500-1½)		NA
LNAV MDA	1000-1	511 (600-1)	1000-1⅜ 511 (600-1⅜)	NA
CIRCLING	1000-1	511 (600-1)	1000-1½ 511 (600-1½)	NA

SC-2. 06 DEC 2018 to 03 JAN 2019

SC-2. 06 DEC 2018 to 03 JAN 2019

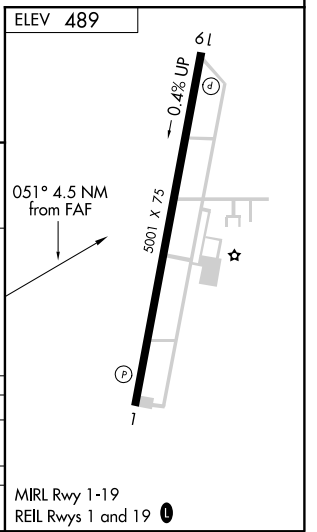
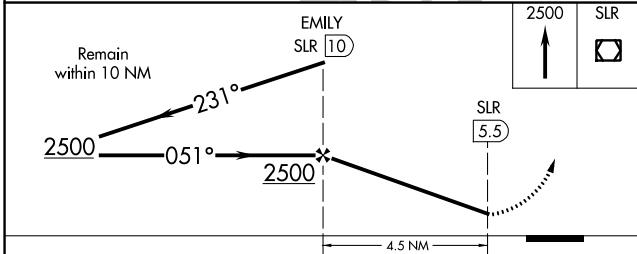
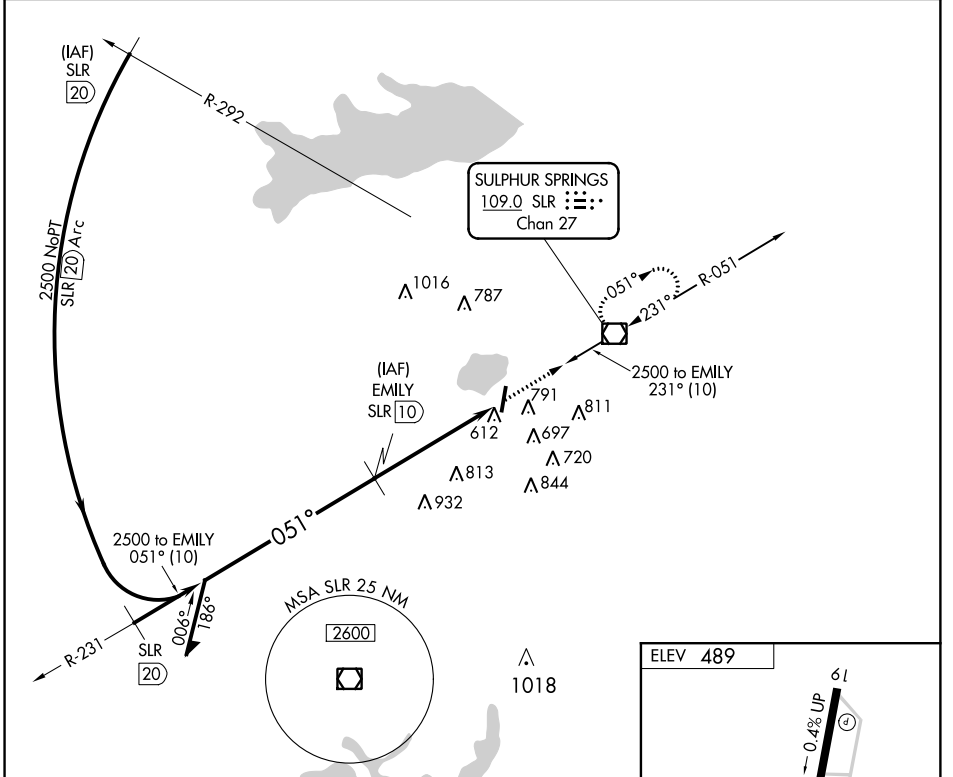
VOR/DME SLR 109.0 Chan 27	APP CRS 051°	Rwy Idg TDZE Apt Elev	N/A N/A 489
---	------------------------	-----------------------------	--

VOR/DME-B
SULPHUR SPRINGS MUNI (SLR)

▼ Obtain local climber setting on CTAF; when not received, use Cox Field altimeter setting.
▲ NA Circling not authorized east of Runway 1-19.

MISSED APPROACH: Climb to 2500 direct SLR VOR/DME and hold.

AWOS-3 118.35	FORT WORTH CENTER 132.025 360.75	UNICOM 123.075 (CTAF) 0
-------------------------	--	--



CATEGORY	A	B	C	D
CIRCLING	940-1 451 (500-1)	960-1 471 (500-1)	960-1½ 471 (500-1½)	NA
COX FIELD ALTIMETER SETTING MINIMUMS				
CIRCLING	1020-1 531 (600-1)	1040-1 551 (600-1)	1040-1½ 551 (600-1½)	NA

SC-2: 06 DEC 2018 to 03 JAN 2019

SC-2: 06 DEC 2018 to 03 JAN 2019

INSTRUMENT APPROACH PROCEDURE CHARTS

A IFR ALTERNATE AIRPORT MINIMUMS

Standard alternate minimums for non-precision approaches and approaches with vertical guidance [NDB, VOR, LOC, TACAN, LDA, SDF, VOR/DME, ASR, RNAV (GPS) or RNAV (RNP)] are 800-2. Standard alternate minimums for precision approaches (ILS, PAR, or GLS) are 600-2. Airports within this geographical area that require alternate minimums other than standard or alternate minimums with restrictions are listed below. NA - means alternate minimums are not authorized due to unmonitored facility, absence of weather reporting service, or lack of adequate navigation coverage. Civil pilots see FAR 91. IFR Alternate Minimums: Ceiling and Visibility Minimums not applicable to USA/USN/USAF. Pilots must review the IFR Alternate Minimums Notes for alternate airfield suitability.

NAME ALTERNATE MINIMUMS
ABILENE, TX
ABILENE

RGNL (ABI).....**ILS or LOC Rwy 35R¹**
LOC Rwy 17R²
RADAR-1²
RNAV (GPS) Rwy 17L²
RNAV (GPS) Rwy 35R²

¹ILS, Categories C, D, 700-2; Category E, 900-3;
LOC, Category E, 900-3.
²Category E, 900-3.

AMARILLO, TX
RICK HUSBAND AMARILLO

INTL (AMA).....**ILS or LOC Rwy 4¹³**
LDA/DME Rwy 22²³
NDB Rwy 4³
RADAR-1³⁴
RNAV (GPS) Y Rwy 4⁴⁵
RNAV (GPS) Y Rwy 13⁴⁵
RNAV (GPS) Y Rwy 22⁴⁵
RNAV (GPS) Y Rwy 31⁵⁶
VOR/DME Rwy 13⁴
VOR/DME Rwy 22⁴
VOR/DME Rwy 31⁴

¹ILS, Category D, 700-2; Category E, 900-3. LOC, Category E, 900-3.
²LDA/GS, Category D, 700-2; Category E, 900-3. LDA, Category E, 900-3.
³NA when control tower closed.
⁴Category E, 900-3.
⁵NA when local weather not available.
⁶Category D, 800-2¼

ARLINGTON, TX
ARLINGTON

MUNI (GKY).....**ILS or LOC/DME Rwy 34¹**
RNAV (GPS) Rwy 34
VOR/DME Rwy 34

NA when local weather not available.
¹NA when control tower closed.

NAME ALTERNATE MINIMUMS
BIG SPRING, TX
BIG SPRING MC MAHON-

WRINKLE (BPG).....**RNAV (GPS) Rwy 6**
RNAV (GPS) Rwy 17
RNAV (GPS) Rwy 24¹
RNAV (GPS) Rwy 35
VOR/DME Rwy 17
VOR/DME Rwy 35

NA when local weather not available.
¹Categories, A, B, 900-2.

BORGER, TX
HUTCHINSON

COUNTY (BGD).....**RNAV (GPS) Rwy 17¹**
RNAV (GPS) Rwy 35¹
VOR Rwy 17²
VOR /DME Rwy 35²

¹Category D, 800-2¼.
²NA when local weather not available.

BOWIE, TX
BOWIE

MUNI (0F2).....**RNAV (GPS) Rwy 17**
RNAV (GPS) Rwy 35

Category C, 800-2¼.

BRECKENRIDGE, TX
STEPHENS

COUNTY (BKD).....**RNAV (GPS) Rwy 17**
RNAV (GPS) Rwy 35

NA when local weather not available.

BRIDGEPORT, TX
BRIDGEPORT

MUNI (XBP).....**RNAV (GPS) Rwy 18**
VOR/DME Rwy 18

NA when local weather not available.

CANADIAN, TX
HEMPHILL

COUNTY (HHF).....**RNAV (GPS) Rwy 4**
RNAV (GPS) Rwy 22

NA when local weather not available.
Category C, 900-2¾; Category D, 1000-3.

06 DEC 2018 to 03 JAN 2019

06 DEC 2018 to 03 JAN 2019

NAME ALTERNATE MINIMUMS

CHILDRESS, TX

CHILDRESS
MUNI (CDS).....RNAV (GPS) Rwy 36
VOR Rwy 36

NA when local weather not available.

CLEBURNE, TX

CLEBURNE
RGNL (CPT).....RNAV (GPS) Rwy 15
RNAV (GPS) Rwy 33

NA when local weather not available.
Category C, 900-2½; Category D, 900-2¾.

DALHART, TX

DALHART
MUNI (DHT).....VOR Rwy 17
Category D, 800-2¼.

DALLAS, TX

ADDISON (ADS).....ILS or LOC Rwy 15¹²
ILS or LOC Rwy 33¹²
RNAV (GPS) Rwy 15³
RNAV (GPS) Rwy 33³⁴

¹NA when control tower closed.
²ILS, Category D, 700-2.
³NA when local weather not available.
⁴Category D, 800-2½.

DALLAS

EXECUTIVE (RBD).....ILS or LOC Rwy 31¹²
RNAV (GPS) Rwy 17³⁴
RNAV (GPS) Rwy 31⁴
RNAV (GPS) Rwy 35³⁴
VOR/DME Rwy 17³⁴

¹NA when control tower closed.
²LOC, Category D, 800-2¼.
³NA when local weather not available.
⁴Category D, 800-2¼.

NAME ALTERNATE MINIMUMS

DALLAS, TX (CON'T)

DALLAS-LOVE
FIELD (DAL).....ILS or LOC Rwy 31L¹
ILS or LOC Rwy 31R²
ILS Y or LOC Y Rwy 13L³
ILS Y or LOC Y Rwy 13R³
RNAV (GPS) Y Rwy 13L⁴
RNAV (GPS) Y Rwy 13R⁴
RNAV (GPS) Y Rwy 31L⁵
RNAV (GPS) Y Rwy 31R⁴
RNAV (GPS) Z Rwy 13L⁴
RNAV (GPS) Z Rwy 13R⁴

¹LOC, Categories A, B, 1100-2; Categories C, D, 1100-3.
²LOC, Categories A, B, 900-2; Category C, 900-2½; Category D, 1100-3.
³LOC, Category D, 1100-3.
⁴Category D, 1100-3.
⁵Categories A, B, 900-2; Category C, 900-2½; Category D, 1100-3.

MCKINNEY

NATIONAL (TKI).....ILS or LOC Rwy 18¹²
RNAV (GPS) Rwy 18
RNAV (GPS) Rwy 36⁴
VOR/DME-A³

NA when local weather not available.
¹NA when control tower closed.
²ILS, LOC Categories A, B, 900-2; Category C, 900-2½; Category D, 900-2¾.
³Category C, 800-2¼; Category D, 800-2½.
⁴Category D, 800-2½.

DALLAS-FORT WORTH, TX

DALLAS-FORT WORTH
INTL (DFW).....CONVERGING ILS Rwy 13R¹
CONVERGING ILS Rwy 31R³
ILS or LOC Rwy 18L²
ILS or LOC Rwy 18R²

¹Categories A, B, C, 900-2½.
²ILS, 700-2.
³ILS, 1100-4.

DECATUR, TX

DECATUR MUNI (LUD).....RNAV (GPS) Rwy 17
RNAV (GPS) Rwy 35

NA when local weather not available.

DENTON, TX

DENTON
ENTERPRISE (DTO).....RNAV (GPS) Rwy 18
RNAV (GPS) Rwy 36

NA when local weather not available.

06 DEC 2018 to 03 JAN 2019

06 DEC 2018 to 03 JAN 2019

NAME ALTERNATE MINIMUMS

DUMAS, TX

MOORE COUNTY (DUX).....RNAV (GPS) Rwy 1
RNAV (GPS) Rwy 19
NA when local weather not available.

EASTLAND, TX

EASTLAND MUNI (ETN).....RNAV (GPS) Rwy 17
RNAV (GPS) Rwy 35
NA when local weather not available.
Category C, 900-2½.

FORT WORTH, TX

FORT WORTH ALLIANCE (AFW).....ILS or LOC Rwy 16L¹
ILS or LOC Rwy 34R¹
RNAV (GPS) Rwy 16L²
RNAV (GPS) Rwy 16R²
RNAV (GPS) Rwy 34R²

¹LOC, Category E, 800-2¼.
²Category E, 800-2¼.

FORT WORTH MEACHAM

INTL (FTW).....RNAV (GPS) Rwy 34
Category D, 800-2½.

FORT WORTH

SPINKS (FWS).....RNAV (GPS) Rwy 17R
RNAV (GPS) Rwy 35L
NA when local weather not available.

GAINESVILLE, TX

GAINESVILLE MUNI (GLE).....RNAV (GPS) Rwy 18
RNAV (GPS) Rwy 36
Category D, 800-2½.

GILMER, TX

FOX STEPHENS FIELD - GILMER MUNI (JXI).....RNAV (GPS) Rwy 18
RNAV (GPS) Rwy 36
NA when local weather not available.
Category C, 800-2¼.

GRAHAM, TX

GRAHAM MUNI (RPH).....RNAV (GPS) Rwy 3
RNAV (GPS) Rwy 21
NA when local weather not available.

GRANBURY, TX

GRANBURY RGNL (GDJ).....RNAV (GPS) Rwy 14
NA when local weather not available.

NAME ALTERNATE MINIMUMS

GRAND PRAIRIE, TX

GRAND PRAIRIE MUNI (GPM).....RNAV (GPS) Rwy 35
VOR/DME Rwy 35,800-2¼
NA when local weather not available.

GREENVILLE, TX

MAJORS (GVT).....ILS Y or LOC/DME Y Rwy 17³
ILS Z or LOC/DME Z Rwy 17³
RNAV (GPS) Rwy 17²
RNAV (GPS) Rwy 35¹
VOR/DME Rwy 17¹
TACAN Rwy 17¹
TACAN Rwy 35¹
NA when local weather not available.

¹Category E, 800-2¼.
²Category D, 800-2¼; Category E, 800-2¾.
³ILS, LOC, Category D, 800-2¼; Category E, 800-2¾.

HENDERSON, TX

RUSK COUNTY (RFI).....RNAV (GPS) Rwy 17
NA when local weather not available.

HEREFORD, TX

HEREFORD MUNI (HRX).....RNAV (GPS) Rwy 2
RNAV (GPS) Rwy 20
NA when local weather not available.

HILLSBORO, TX

HILLSBORO MUNI (INJ).....RNAV (GPS) Rwy 16
RNAV (GPS) Rwy 34
NA when local weather not available.

LAMESA, TX

LAMESA MUNI (LUV).....RNAV (GPS) Rwy 16
RNAV (GPS) Rwy 34
Category D, 900-2¾.

LANCASTER, TX

LANCASTER RGNL (LNC).....RNAV (GPS) Rwy 31
NA when local weather not available.

06 DEC 2018 to 03 JAN 2019

06 DEC 2018 to 03 JAN 2019

NAME ALTERNATE MINIMUMS

LONGVIEW, TX

EAST TEXAS
RGNL (GGG).....**ILS or LOC Rwy 13¹²³**
RNAV (GPS) Rwy 13¹³
RNAV (GPS) Rwy 18³
RNAV (GPS) Rwy 31¹³
RNAV (GPS) Rwy 36³
VOR/DME or TACAN Rwy 13¹³
VOR/DME or TACAN Rwy 31¹

¹Category E, 800-2½.
²NA when control tower closed.
³NA when local weather not available.

LUBBOCK, TX

LUBBOCK PRESTON SMITH
INTL (LBB).....**ILS or LOC Rwy 17R¹**
ILS or LOC Rwy 26¹
RNAV (GPS) Rwy 8²
RNAV (GPS) Rwy 26²
RNAV (GPS) Y Rwy 17R²
RNAV (GPS) Y Rwy 35L²
VOR/DME or TACAN Rwy 26³

¹ILS, Category D, 700-2; Category E, 900-3; LOC, Category E, 900-3.
²Category E, 900-3.
³Category E, 800-2½.

MESQUITE, TX

MESQUITE METRO (HQZ).....**ILS or LOC Rwy 18¹**
LOC/DME BC Rwy 36
RNAV (GPS) Rwy 18
RNAV (GPS) Rwy 36

NA when local weather not available.
¹ILS, Category C, 800-2.

MIDLOTHIAN/WAXAHACHIE, TX

MID-WAY
RGNL (JWY).....**RNAV (GPS) Rwy 18**
RNAV (GPS) Rwy 36

NA when local weather not available.

MINERAL WELLS, TX

MINERAL WELLS (MWL).....**ILS or LOC Rwy 31¹**
RNAV (GPS) Rwy 31²

NA when local weather not available.
¹ILS, Category C, 800-2; Category D, 800-2¼.
LOC, Category D, 800-2¼.
²Category C, 800-2¼; Category D, 800-2½.

MOUNT PLEASANT, TX

MOUNT PLEASANT
RGNL (OSA).....**RNAV (GPS) Rwy 17¹**
RNAV (GPS) Rwy 35

NA when local weather not available.
¹Category D, 800-2¼.

NAME ALTERNATE MINIMUMS

PAMPA, TX

PERRY LEFORS
FIELD (PPA).....**RNAV (GPS) Rwy 17**
VOR/DME-A
NA when local weather not available.

PARIS, TX

COX FIELD (PRX).....**RNAV (GPS) Rwy 17**
RNAV (GPS) Rwy 35
VOR Rwy 35
NA when local weather not available.

PERRYTON, TX

PERRYTON OCHILTREE
COUNTY (PYX).....**RNAV (GPS) Rwy 17**
RNAV (GPS) Rwy 35
NA when local weather not available.

PLAINVIEW, TX

HALE COUNTY (PVW).....**RNAV (GPS) Rwy 4**
RNAV (GPS) Rwy 22
NA when local weather not available.

ROCKWALL, TX

RAPHL M HALL/ROCKWALL
MUNI (F46).....**NDB-A¹**
RNAV (GPS) Rwy 17
RNAV (GPS) Rwy 35
NA when local weather not available.
¹Category A,B, 900-2.

SEMINOLE, TX

GAINES
COUNTY (GNC).....**RNAV (GPS) Rwy 35**
NA when local weather not available.

SHERMAN/DENISON, TX

NORTH TEXAS REGIONAL/PERRIN
FIELD (GYI).....**RNAV (GPS) Rwy 17L**
RNAV (GPS) Rwy 35R
VOR/DME-A
NA when local weather not available.

SNYDER, TX

WINSTON
FIELD (SNK).....**RNAV (GPS) Rwy 35**
NA when local weather not available.

SULPHUR SPRINGS, TX

SULPHUR SPRINGS
MUNI (SLR).....**RNAV (GPS) Rwy 1**
NA when local weather not available.

06 DEC 2018 to 03 JAN 2019

06 DEC 2018 to 03 JAN 2019

18312

NAME ALTERNATE MINIMUMS NAME ALTERNATE

SWEETWATER, TX

AVENGER FIELD (SWW).....NDB Rwy 17
RNAV (GPS) Rwy 4
RNAV (GPS) Rwy 17
RNAV (GPS) Rwy 22
RNAV (GPS) Rwy 35

NA when local weather not available.

TERRELL, TX

TERRELL MUNI (TRL).....RNAV (GPS) Rwy 17
RNAV (GPS) Rwy 35

NA when local weather not available.

TYLER, TX

TYLER POUNDS
RGNL (TYR).....ILS or LOC Rwy 13¹
RNAV (GPS) Rwy 4²
RNAV (GPS) Rwy 13²
RNAV (GPS) Rwy 17²
RNAV (GPS) Rwy 22²
RNAV (GPS) Rwy 31²
RNAV (GPS) Rwy 35²
VOR Rwy 4²
VOR Rwy 31²

¹LOC, Category D, 800-2¹/₄.

²Category D, 800-2¹/₄.

VERNON, TX

WILBARGER
COUNTY (F05).....RNAV (GPS) Rwy 2
RNAV (GPS) Rwy 20

NA when local weather not available.

WICHITA FALLS, TX

KICKAPOO
DOWNTOWN (CWC).....RNAV (GPS) Rwy 35
NA when local weather not available.

SHEPPARD AFB/
WICHITA FALLS MUNI (KSPS).....RADAR-1
NA when Sheppard approach control closed.

06 DEC 2018 to 03 JAN 2019

06 DEC 2018 to 03 JAN 2019

18312

M5

TAKEOFF MINIMUMS, (OBSTACLE) DEPARTURE PROCEDURES, AND DIVERSE VECTOR AREA (RADAR VECTORS)

18312

INSTRUMENT APPROACH PROCEDURE CHARTS

IFR TAKEOFF MINIMUMS AND (OBSTACLE) DEPARTURE PROCEDURES

Civil Airports and Selected Military Airports

ALL USERS: Airports that have Departure Procedures (DPs) designed specifically to assist pilots in avoiding obstacles during the climb to the minimum enroute altitude, and/or airports that have civil IFR takeoff minimums other than standard, are listed below. Takeoff Minimums and Departure Procedures apply to all runways unless otherwise specified. An entry may also be listed that contains only Takeoff Obstacle Notes. Altitudes, unless otherwise indicated, are minimum altitudes in MSL.

DPs specifically designed for obstacle avoidance are referred to as Obstacle Departure Procedures (ODPs) and are textually described below, or published separately as a graphic procedure. If the ODP is published as a graphic procedure, its name will be listed below, and it can be found in either this volume (civil), or the applicable military volume, as appropriate. Users will recognize graphic obstacle DPs by the term "(OBSTACLE)" included in the procedure title; e.g., TETON TWO (OBSTACLE). If not specifically assigned an ODP, SID, or radar vector as part of an IFR clearance, an ODP may be required to be flown for obstacle clearance, even though not specifically stated in the IFR clearance. When doing so in this manner, ATC should be informed when the ODP being used contains a specified route to be flown, restrictions before turning, and/or altitude restrictions.

Some ODPs, which are established solely for obstacle avoidance, require a climb in visual conditions to cross the airport, a fix, or a NAVAID in a specified direction, at or above a specified altitude. These procedures are called Visual Climb Over Airport (VCOA). To ensure safe and efficient operations, the pilot must verbally request approval from ATC to fly the VCOA when requesting their IFR clearance.

At some locations where an ODP has been established, a diverse vector area (DVA) may be created to allow radar vectors to be used in lieu of an ODP. DVA information will state that headings will be as assigned by ATC and climb gradients, when applicable, will be published immediately following the specified departure procedure.

Graphic DPs designed by ATC to standardize traffic flows, ensure aircraft separation and enhance capacity are referred to as "Standard Instrument Departures (SIDs)". SIDs also provide obstacle clearance and are published under the appropriate airport section. ATC clearance must be received prior to flying a SID.

CIVIL USERS NOTE: Title 14 Code of Federal Regulations Part 91 prescribes standard takeoff rules and establishes takeoff minimums for certain operators as follows: (1) For aircraft, other than helicopters, having two engines or less – one statute mile visibility. (2) For aircraft having more than two engines – one-half statute mile visibility. (3) For helicopters – one-half statute mile visibility. These standard minima apply in the absence of any different minima listed below.

MILITARY USERS NOTE: Civil (nonstandard) takeoff minima are published below. For military takeoff minima, refer to appropriate service directives.

NAME	TAKEOFF MINIMUMS
------	------------------

ABILENE, TX

ABILENE RGNL (ABI)

TAKEOFF MINIMUMS AND (OBSTACLE)
DEPARTURE PROCEDURES
AMDT 3 17005 (FAA)

TAKEOFF MINIMUMS: **Rwy 22**, 300-2¼ or std. w/ min. climb of 203' per NM to 2200, or alternatively, with standard takeoff minimums and a normal 200' per NM climb gradient, takeoff must occur no later than 1200' prior to DER.

DEPARTURE PROCEDURE: **Rwy 17L**, climb on heading 175° to 3000 before proceeding on course.

TAKEOFF OBSTACLE NOTES: **Rwy 4**, chy beginning 1839' from DER, 489' right of centerline, up to 49' AGL/1815' MSL. **Rwy 17R**, grd 13' from DER, 474' left of centerline, 1789' MSL. Pole 949' from DER, 742' left of centerline, 29' AGL/1820' MSL. **Rwy 22**, fence 8' from DER, 372' left of centerline, 14' AGL/1762' MSL. Tree 119' from DER, 400' left of centerline, 1769' MSL. Tree 122' from DER, 517' right of centerline, 21' AGL/1772' MSL. Trees beginning 144' from DER, 375' left of centerline, up to 28' AGL/1776' MSL. Tree 327' from DER, 471' right of centerline, 24' AGL/1775' MSL. Tree 439' from DER, 450' right of centerline, 22' AGL/1777' MSL. Pole 1151' from DER, 746' left of centerline, 31' AGL/1784' MSL. Tower 4018' from DER, 227' right of centerline, 135' AGL/1870' MSL. Tower 1.9 NM from DER, 276' left of centerline, 306' AGL/2051' MSL. **Rwy 35L**, pole, wsk beginning 193' from DER, 516' right of centerline, up to 8' AGL/1769' MSL. **Rwy 35R**, DME 1203' from DER, 265' left of centerline, 15' AGL/1823' MSL.

NAME	TAKEOFF MINIMUMS
------	------------------

AMARILLO, TX

RICK HUSBAND AMARILLO INTL (AMA)

TAKEOFF MINIMUMS AND (OBSTACLE)
DEPARTURE PROCEDURES
AMDT 1A 18172 (FAA)

DEPARTURE PROCEDURE: **Rwy 22**, climb heading 218° to 4100 before turning northbound. **Rwy 31**, climbing right turn heading 360° to 5400 before turning westbound.

TAKEOFF OBSTACLE NOTES: **Rwy 4**, sign 12' from DER, 302' right of centerline, 3' AGL/3605' MSL. VORTAC 1306' from DER, 849' left of centerline, 42' AGL/3637' MSL. **Rwy 31**, sign 22' from DER, 257' right of centerline, 7' AGL/3605' MSL. Sign 103' from DER, 379' left of centerline, 3' AGL/3606' MSL.

06 DEC 2018 to 03 JAN 2019

06 DEC 2018 to 03 JAN 2019

TAKEOFF MINIMUMS, (OBSTACLE) DEPARTURE PROCEDURES, AND DIVERSE VECTOR AREA (RADAR VECTORS)

18312

SC-2

TAKEOFF MINIMUMS, (OBSTACLE) DEPARTURE PROCEDURES, AND DIVERSE VECTOR AREA (RADAR VECTORS)

18312

AMARILLO, TX (CON'T)

TRADEWIND (TDW)

TAKEOFF MINIMUMS AND (OBSTACLE)
DEPARTURE PROCEDURES
AMDT 3 11321 (FAA)

TAKEOFF MINIMUMS: **Rwy 5, 23**, NA - Environmental.

Rwy 35, 300-1¼ or std. w/min. climb of 248' per NM to 4000.

DEPARTURE PROCEDURE: **Rwy 35**, climb heading 004° to 5500 before turning left.

TAKEOFF OBSTACLE NOTES: **Rwy 17**, fence beginning 14' from DER, left and right of centerline, up to 6' AGL/3645' MSL. Vehicle on road 57' from DER, left and right of centerline, up to 17' AGL/3656' MSL. Poles beginning 297' from DER, 331' right of centerline, up to 34' AGL/3673' MSL. Trees beginning 121' from DER, 181' right of centerline, up to 55' AGL/3675' MSL. Trees beginning 175' from DER, 306' left of centerline, up to 55' AGL/3688' MSL. **Rwy 35**, fences and signs beginning 18' from DER, left and right of centerline, up to 10' AGL/3659' MSL. Vehicle on road beginning 60' from DER, left and right of centerline, up to 17' AGL/3666' MSL. Power lines beginning 124' from DER, left and right of centerline, up to 50' AGL/3679' MSL. Trees beginning 168' from DER, 142' left of centerline, up to 55' AGL/3698' MSL. Trees beginning 60' from DER, 166' right of centerline, up to 55' AGL/3698' MSL. Tower 1.2 NM from DER, 4181' right of centerline, 300' AGL/3912' MSL. Tower 1.3 NM from DER, 2290' left of centerline, 250' AGL/3910' MSL.

ANDREWS, TX

ANDREWS COUNTY (E11)

TAKEOFF MINIMUMS AND (OBSTACLE)
DEPARTURE PROCEDURES
AMDT 1 09239 (FAA)

TAKEOFF MINIMUMS: **Rwy 20**, 400-2¼ or std. w/ min. climb of 229' per NM to 3700.

DEPARTURE PROCEDURE: **Rwy 11**, climb heading 114° to 3600 before turning left. **Rwy 29**, climb heading 294° to 3600 before turning left.

TAKEOFF OBSTACLE NOTES: **Rwy 34**, antenna 1189' from DER, 588' left of centerline, 52' AGL/3236' MSL. Poles beginning 181' from DER, 470' left of centerline, up to 36' AGL/3210' MSL. Bush 471' from DER, 92' left of centerline, 7' AGL/3186' MSL. Tree 1207' from DER, 587' left of centerline, 44' AGL/3228' MSL. Bushes beginning 282' from DER, 305' right of centerline, up to 10' AGL/3189' MSL. Tree 4780' from DER, 895' right of centerline, 100' AGL/3304' MSL.

ARLINGTON, TX

ARLINGTON MUNI (GKY)

TAKEOFF MINIMUMS AND (OBSTACLE)
DEPARTURE PROCEDURES
AMDT 3 14261 (FAA)

DEPARTURE PROCEDURE: **Rwy 16**, climb heading 162° to 2500 before turning left. **Rwy 34**, climb heading 342° to 1400 before turning southeast bound.

TAKEOFF OBSTACLE NOTES: **Rwy 16**, REILS beginning 80' from DER, 126' left of centerline, up to 15' AGL/601' MSL. REILS beginning 77' from DER, 126' right of centerline, up to 19' AGL/603' MSL. Trees 593' from DER, 479' right of centerline, up to 26' AGL/614' MSL. Transmission tower 3596' from DER, 1433' left of centerline, 112' AGL/702' MSL. **Rwy 34**, trees beginning 228' from DER, 403' left of centerline, up to 35' AGL/654' MSL. Trees beginning 1090' from DER, 439' right of centerline, up to 61' AGL/670' MSL. Trees 1525' from DER, 339' left of centerline, up to 72' AGL/681' MSL.

ATHENS, TX

ATHENS MUNI (F44)

TAKEOFF MINIMUMS AND (OBSTACLE)
DEPARTURE PROCEDURES
ORIG 10154 (FAA)

TAKEOFF OBSTACLE NOTES: **Rwy 17**, trees beginning 209' from DER, 5' right of centerline, up to 89' AGL/561' MSL. Trees beginning 86' from DER, 4' left of centerline, up to 94' AGL/538' MSL. Catenary 864' from DER, left to right of centerline, 37' AGL/524' MSL. Buildings beginning 280' from DER, 343' right of centerline, up to 24' AGL/469' MSL. Fence beginning 209' from DER, 299' right of centerline, up to 6' AGL/446' MSL. Poles beginning 397' from DER, 6' right of centerline, up to 42' AGL/524' MSL. **Rwy 35**, trees beginning 112' from DER, 33' right of centerline, up to 81' AGL/511' MSL. Trees beginning 574' from DER, 26' left of centerline, up to 75' AGL/510' MSL. Catenary 889' from DER, 603' left of centerline, 34' AGL/475' MSL. Pole 892' from DER, 571' left of centerline, 35' AGL/475' MSL. Pole 692' from DER, 416' left of centerline, 32' AGL/470' MSL. Pole 549' from DER, 309' right of centerline, 28' AGL/455' MSL. Vehicle on road 199' from DER, 249' right of centerline, 16' AGL/451' MSL. Vehicle on road 574' from DER, 556' left of centerline, 16' AGL/456' MSL. Vehicle on road 619' from DER, 543' left of centerline, 16' AGL/455' MSL. Vehicle on road 336' from DER, 251' right of centerline, 16' AGL/449' MSL. Buildings beginning 198' from DER, 338' right of centerline, 14' AGL/450' MSL. Ground 208' from DER, 412' right of centerline, 443' MSL.

ATLANTA, TX

HALL-MILLER MUNI (ATA)

TAKEOFF MINIMUMS AND (OBSTACLE)
DEPARTURE PROCEDURES
AMDT 2 12040 (FAA)

TAKEOFF MINIMUMS: **Rwy 5**, 200-1¼ or std. w/min. climb of 229' per NM to 500. **Rwy 23**, 300-1½.

DEPARTURE PROCEDURE: **Rwy 5**, climb heading 048° to 800 before turn left.

TAKEOFF OBSTACLE NOTES: **Rwy 5**, tower 4143' from DER, 677' left of centerline, up to 125' AGL/398' MSL. **Rwy 23**, trees beginning 1042' from DER, left and right of centerline, up to 100' AGL/489' MSL.

BIG SPRING, TX

BIG SPRING MC MAHON-WRINKLE (BPG)

TAKEOFF MINIMUMS AND (OBSTACLE)
DEPARTURE PROCEDURES
AMDT 3 12068 (FAA)

TAKEOFF MINIMUMS: **Rwy 6**, 400-1½ w/min. climb of 254' per NM to 3400, or std. w/min. climb of 399' per NM to 3100.

DEPARTURE PROCEDURE: **Rwy 6**, climb heading 060° to 3300 before turning right. **Rwy 17**, climb heading 175° to 3100 before turning left.

TAKEOFF OBSTACLE NOTES: **Rwy 6**, trees beginning 160' from DER, 177' right of centerline, up to 25' AGL/2628' MSL. Trees beginning 424' from DER, 221' left of centerline, up to 38' AGL/2739' MSL. Poles beginning 1569' from DER, 19' left of centerline, up to 36' AGL/2722' MSL. Poles beginning 1529' from DER, 178' right of centerline, up to 34' AGL/2628' MSL. Tank 1.2 NM from DER, 2179' left of centerline, 135' AGL/2859' MSL.

TAKEOFF MINIMUMS, (OBSTACLE) DEPARTURE PROCEDURES, AND DIVERSE VECTOR AREA (RADAR VECTORS)

18312

TAKEOFF MINIMUMS, (OBSTACLE) DEPARTURE PROCEDURES, AND DIVERSE VECTOR AREA (RADAR VECTORS)

18312

BONHAM, TX

JONES FIELD (F00)

TAKEOFF MINIMUMS AND (OBSTACLE)

DEPARTURE PROCEDURES

AMDT 2 11237 (FAA)

DEPARTURE PROCEDURE: **Rwy 17**, climb heading 176° to 1100 before turning right.TAKEOFF OBSTACLE NOTES: **Rwy 17**, trees 106' from DER, 293' right of centerline, 20' AGL/630' MSL. Trees 560' from DER, left and right of centerline, 30' AGL/630' MSL. T-L tower 868' from DER, 575' right of centerline, 38' AGL/655' MSL. Multiple power poles 1374' from DER, left and right of centerline, 45' AGL/655' MSL. **Rwy 35**, trees 1540' from DER, 858' left of centerline, 80' AGL/659' MSL. Trees 1660' from DER, 812' right of centerline, 80' AGL/699' MSL.

BORGER, TX

HUTCHINSON COUNTY (BGD)

TAKEOFF MINIMUMS AND (OBSTACLE)

DEPARTURE PROCEDURES

AMDT 1 08157 (FAA)

TAKEOFF MINIMUMS: **Rwy 17**, 200-1½ or std. w/ min. climb of 421' per NM to 3400.TAKEOFF OBSTACLE NOTES: **Rwy 3**, tree 3200' from DER, 851' left of centerline, 100' AGL/3129' MSL. **Rwy 17**, pole 683' from DER, 396' right of centerline, 21' AGL/3090' MSL. Trees beginning 820' from DER, 279' right of centerline, up to 34' AGL/3093' MSL. Vehicle on road 219' from DER, 513' right to left of centerline, 15' AGL/3074' MSL. Vehicle on road 1141' from DER, 772' right to left of centerline, 17' AGL/3086' MSL. Trees beginning 1628' from DER, 207' left of centerline, up to 43' AGL/3112' MSL. Antenna 1427' from DER, 15' left of centerline, 46' AGL/3105' MSL. **Rwy 21**, bush 138' from DER, 109' right of centerline, 31' AGL/3040' MSL.

BOWIE, TX

BOWIE MUNI (0F2)

TAKEOFF MINIMUMS AND (OBSTACLE)

DEPARTURE PROCEDURES

ORIG 09071 (FAA)

TAKEOFF OBSTACLE NOTES: **Rwy 17**, tree 131' from DER, 311' right of centerline, 100' AGL/1169' MSL. Trees beginning 122' from DER, 313' left of centerline, up to 100' AGL/1199' MSL. **Rwy 35**, tree 418' from DER, 299' left of centerline, 100' AGL/1206' MSL. Vehicle on road 726' from DER, 471' left of centerline, 15' AGL/1131' MSL.

BRECKENRIDGE, TX

STEPHENS COUNTY (BKD)

TAKEOFF MINIMUMS AND (OBSTACLE)

DEPARTURE PROCEDURES

ORIG 12208 (FAA)

TAKEOFF MINIMUMS: **Rwys 4, 22, 13, 31** NA - ATC. TAKEOFF OBSTACLE NOTES: **Rwy 17**, Trees beginning 1424' from DER, 214' left and right of centerline, up to 55' AGL/1344' MSL. **Rwy 35**, Trees beginning 538' from DER, left and right of centerline, up to 55' AGL/1324' MSL. Vehicles on road 631' from DER, 205ft right of centerline, up to 15' AGL/1284' MSL.

BRIDGEPORT, TX

BRIDGEPORT MUNI (XBP)

TAKEOFF MINIMUMS AND (OBSTACLE)

DEPARTURE PROCEDURES

AMDT 2 09351 (FAA)

TAKEOFF MINIMUMS: **Rwy 18**, 400-2 or std. w/ min. climb of 458' per NM to 1300. **Rwy 36**, 300-1¼ or std. w/ min. climb of 427' per NM to 1200.TAKEOFF OBSTACLE NOTES: **Rwy 18**, trees beginning 2383' from DER, 504' right of centerline, up to 100' AGL/1169' MSL. Trees beginning 2438' from DER, 525' left of centerline, up to 100' AGL/1109' MSL. Tower 1.2 NM from DER, 664' left of centerline, 55' AGL/1046' MSL. Tower 1.2 NM from DER, 1121' left of centerline, 55' AGL/1042' MSL. **Rwy 36**, trees beginning 111' from DER, 21' right of centerline, up to 100' AGL/851' MSL. Trees beginning 607' from DER, 430' left of centerline, up to 100' AGL/1039' MSL. Hanger 12' from DER, 424' right of centerline, 17' AGL/827' MSL. Multiple poles and towers beginning 1064' from DER, 297' left of centerline, 43' AGL/969' MSL.

BROWNFIELD, TX

TERRY COUNTY (BFE)

TAKEOFF MINIMUMS AND (OBSTACLE)

DEPARTURE PROCEDURES

ORIG 09295 (FAA)

TAKEOFF OBSTACLE NOTES: **Rwy 2**, aircraft on taxiway beginning at DER, 188' left of centerline, up to 17' AGL/3281' MSL. Vehicle on roadway, 121' from DER, 519' right of centerline, 15' AGL/3269' MSL. Hangar 591' from DER, 333' left of centerline, 30' AGL/3289' MSL. Tree 950' from DER, 179' right of centerline, 34' AGL/3299' MSL. **Rwy 13**, vehicles on roadway beginning 71' from DER, 61' left of centerline, up to 15' AGL/3269' MSL. **Rwy 20**, tree 2937' from DER, 1108' right of centerline, 75' AGL/3329' MSL. **Rwy 31**, vehicles on roadway beginning at DER, 198' left of centerline, up to 15' AGL/3284' MSL. Aircraft on taxiway beginning at DER, 253' right of centerline, up to 17' AGL/3281' MSL. Vehicles on roadway beginning 299' from DER, 14' right of centerline up to 15' AGL/3284' MSL. Hangar 572' from DER, 597' right of centerline, 30' AGL/3299' MSL. Tree 1832' from DER, 233' right of centerline, 75' AGL/3344' MSL.

06 DEC 2018 to 03 JAN 2019

06 DEC 2018 to 03 JAN 2019

TAKEOFF MINIMUMS, (OBSTACLE) DEPARTURE PROCEDURES, AND DIVERSE VECTOR AREA (RADAR VECTORS)

18312

SC-2

TAKEOFF MINIMUMS, (OBSTACLE) DEPARTURE PROCEDURES, AND DIVERSE VECTOR AREA (RADAR VECTORS)

18312

CANADIAN, TX

HEMPHILL COUNTY(HHF)

TAKEOFF MINIMUMS AND (OBSTACLE)

DEPARTURE PROCEDURES

AMDT 3 14317 (FAA)

TAKEOFF MINIMUMS: **Rwy 4**, 200-1¼ or std. w/min. climb of 285' per NM to 2700. **Rwy 18**, std. w/ min. climb of 295' per NM to 3600, or 1300-3 for climb in visual conditions.

DEPARTURE PROCEDURE: **Rwy 22**, climb heading 218° to 3100 before turning left.

VCOA: **Rwy 18**, obtain ATC approval for climb in visual conditions when requesting IFR clearance. Climb in visual conditions to cross Hemphill airport at or above 3500 before proceeding on course.

TAKEOFF OBSTACLE NOTES: **Rwy 36**, vehicle on road 174' from DER, 170' left of centerline, up to 15' AGL/2379' MSL. Trees beginning 1172' for DER, 652' left of centerline, up to 55' AGL/2426' MSL. **Rwy 4**, trees beginning at DER, 462' right of centerline, up to 55' AGL/2428' MSL. Trees 1034' from DER, 50' left of centerline, 55' AGL/2419' MSL. Trees 3028' from DER, 770' right of centerline, 55' AGL/2503' MSL. Elevator 5708' from DER, 1440' left of centerline, 229' AGL/2581' MSL. Tower 6532' from DER, 3' right of centerline, 123' AGL/2548' MSL. **Rwy 18**, pole 123' from DER, 521' right of centerline, 36' AGL/2427' MSL. Trees 791' from DER, 246' left of centerline, 55' AGL/2454' MSL. Tower 8010' from DER, 203' left of centerline, 60' AGL/2615' MSL. **Rwy 22**, fence and terrain beginning 12' from DER, left and right of centerline, 8' AGL/2396' MSL. Trees beginning 403' from DER, 487' left of centerline, 49' AGL/2457' MSL.

CISCO, TX

GREGORY M SIMMONS MEMORIAL

(GZN)

TAKEOFF MINIMUMS AND (OBSTACLE)

DEPARTURE PROCEDURES

ORIG 18032 (FAA)

TAKEOFF OBSTACLE NOTES: **Rwy 18**, pipes, poles and fence beginning 8' from DER, 275' right of centerline, up to 23' AGL/1737' MSL. Trees beginning 69' from DER, 511' right of centerline, up to 29' AGL/1737' MSL. Trees beginning 558' from DER, 79' right of centerline, up to 29' AGL/1742' MSL. Trees beginning 754' from DER, 28' right of centerline, up to 36' AGL/1739' MSL. Tree 139' from DER, 476' left of centerline, 39' AGL/1739' MSL. Trees beginning 502' from DER, 58' left of centerline, up to 34' AGL/1743' MSL. **Rwy 36**, terrain 42' from DER, 20' right of centerline, 1708' MSL. Blast wall, obstruction lights and fence beginning 37' from DER, crossing centerline from 298' left to 153' right, up to 9' AGL/1715' MSL. Vehicle on road beginning 98' from DER, crossing centerline from 501' left to 355' right, 15' AGL/1713' MSL. Vehicle on interstate beginning 176' from DER, crossing centerline from 519' left to 25' left, 24' AGL/1716' MSL. Pylons beginning 396' from DER, crossing centerline from 118' left to 229' right of centerline, up to 26' AGL/1728' MSL. Trees beginning 412' from DER, 10' left of centerline, up to 31' AGL/1727' MSL. Trees beginning 381' from DER, 25' right of centerline, up to 32' AGL/1733' MSL.

CLEBURNE, TX

CLEBURNE RGNL (CPT)

TAKEOFF MINIMUMS AND (OBSTACLE)

DEPARTURE PROCEDURES

ORIG-A 13178 (FAA)

TAKEOFF MINIMUMS: **Rwy 33**, 300-1½ or std. w/ min. climb of 422' per NM to 1200.

TAKEOFF OBSTACLE NOTES: **Rwy 15**, multiple poles, beginning 952' from DER, 425' right of centerline, up to 30' AGL/883' MSL. Tree 441' from DER, 501' right of centerline, 55' AGL/868' MSL. Pole 1137' from DER, 742' left of centerline 35' AGL/875' MSL. **Rwy 33**, multiple trees, beginning 602' from DER, 300' left of centerline, up to 55' AGL/873' MSL. Well drilling rig, 3268' from DER, 123' left of centerline, 174' AGL/1043' MSL. Well drilling rig 1.2 NM from DER, 615' left of centerline, 104' AGL/976' MSL. Transmission pole, 1817' from DER, 183' left of centerline, 80' AGL/900' MSL.

CHILDRESS, TX

CHILDRESS MUNI (CDS)

TAKEOFF MINIMUMS AND (OBSTACLE)

DEPARTURE PROCEDURES

AMDT1 11069 (FAA)

TAKEOFF OBSTACLE NOTES: **Rwy 4**, trees beginning from 997' from DER, 4' right of centerline, up to 100' AGL/2049' MSL. Tree 1151' from DER, 93' left of centerline, 100' AGL/2049' MSL. **Rwy 18**, post 64' from DER, 49' right of centerline, 5' AGL/1958' MSL. Trees beginning from 1286' from DER, 630' right of centerline, up to 100' AGL/2008' MSL. **Rwy 22**, tree 4873' from DER, 231' left of centerline, 100' AGL/2069' MSL. Tree 5638' from DER, 1746' right of centerline, 100' AGL/2089' MSL. **Rwy 36**, tree 196' from DER, 442' right of centerline, 100' AGL/2049' MSL. Tree 578' from DER, 387' left of centerline, 100' AGL/2049' MSL.

06 DEC 2018 to 03 JAN 2019

06 DEC 2018 to 03 JAN 2019

TAKEOFF MINIMUMS, (OBSTACLE) DEPARTURE PROCEDURES, AND DIVERSE VECTOR AREA (RADAR VECTORS)

18312

SC-2

TAKEOFF MINIMUMS, (OBSTACLE) DEPARTURE PROCEDURES, AND DIVERSE VECTOR AREA (RADAR VECTORS)

18312

COMMERCE, TX

COMMERCE MUNI (2F7)

TAKEOFF MINIMUMS AND (OBSTACLE)

DEPARTURE PROCEDURES

AMDT 2 10322 (FAA)

TAKEOFF MINIMUMS: **Rwy 18**, 300-2 or std. w/ min. climb of 213' per NM to 900.DEPARTURE PROCEDURE: **Rwy 18**, climb heading 179° to 1100 before turning right.TAKEOFF OBSTACLE NOTES: **Rwy 18**, vehicle on road 7' from DER, 345' left of centerline, 15' AGL/524' MSL. Trees 725' from DER, 481' right of centerline, up to 100' AGL/609' MSL. Power line beginning 1.4 NM from DER, 1425' left of centerline, up to 200' AGL/759' MSL. **Rwy 36**, vehicle on road 9' from DER, 307' right of centerline, 15' AGL/534' MSL. Terrain 15' from DER, 424' left of centerline, 519' MSL. Trees beginning 688' from DER, 127' right of centerline, up to 100' AGL/619' MSL. Vehicle on road 708' from DER, on centerline, 15' AGL/534' MSL. Trees beginning 4694' from DER, 107' right of centerline, up to 100' AGL/639' MSL.

CORSICANA, TX

C. DAVID CAMPBELL FLD-CORSICANA MUNI (CRS)

TAKEOFF MINIMUMS AND (OBSTACLE)

DEPARTURE PROCEDURES

ORIG 11265 (FAA)

TAKEOFF MINIMUMS: **Rwys 2,20**, NA - Turf.TAKEOFF OBSTACLE NOTES: **Rwy 14**, trees beginning 188' from DER, 43' left and right of centerline, up to 48' AGL/480' MSL. Terrain beginning 64' from DER, 16' left and right of centerline, 440' MSL. Vehicle on road 201' from DER, 349' right of centerline, 15' AGL/446' MSL. Power lines beginning 1071' from DER, 749' left of centerline, 40' AGL/479' MSL. **Rwy 32**, trees beginning 208' from DER, 317' left and right of centerline, up to 51' AGL/500' MSL. Poles beginning 583' from DER, 384' right of centerline, up to 35' AGL/484' MSL. Bush, 70' from DER, 493' left of centerline, 11' AGL/460' MSL. Vehicle on road beginning 482' from DER, on runway centerline, 15' AGL/468' MSL.

CROSBYTON, TX

CROSBYTON MUNI (8F3)

TAKEOFF MINIMUMS AND (OBSTACLE)

DEPARTURE PROCEDURES

ORIG-A 18116 (FAA)

TAKEOFF OBSTACLE NOTES: **Rwy 17**, lighting 8' from DER, 33' left of centerline, 3014' MSL. Vegetation 81' from DER, 332' right of centerline, 3' AGL/3015' MSL. **Rwy 35**, poles and transmission lines, beginning 819' from DER, 273' left and right of centerline, up to 35' AGL/3053' MSL. Pole 862' from DER, 537' right of centerline, 3047' MSL.

DALHART, TX

DALHART MUNI (DHT)

TAKEOFF MINIMUMS AND (OBSTACLE)

DEPARTURE PROCEDURES

ORIG 87155 (FAA)

TAKEOFF MINIMUMS: **Rwy 3**, 600-2 or std. with a min. climb of 250' per NM to 4400.

DALLAS, TX

ADDISON (ADS)

TAKEOFF MINIMUMS AND (OBSTACLE)

DEPARTURE PROCEDURES

AMDT 6 14261 (FAA)

TAKEOFF MINIMUMS: **Rwy 15**, 400-2½ or std. w/min. climb of 325' per NM to 1100.TAKEOFF OBSTACLE NOTES: **Rwy 15**, vehicles on road and in parking lots, railroads, and poles beginning 168' from DER, 118' right of centerline, up to 36' AGL/665' MSL. Navaid, sign, vehicles in parking lots, railroads, poles, trees, and buildings beginning 316' from DER, 1' left of centerline, up to 50' AGL/683' MSL. Pole and trees beginning 1705' from DER, 46' right of centerline, up to 59' AGL/690' MSL. Buildings beginning 3191' from DER, left and right of centerline, up to 149' AGL/787' MSL. Building 1.1 NM from DER, 279' left of centerline, 229' AGL/850' MSL. Building 1.9 NM from DER, 970' right of centerline, 345' AGL/975' MSL. Building 2.1 NM from DER, 58' right of centerline, 362' AGL/973' MSL. **Rwy 33**, service road and buildings beginning 45' from DER, 458' right of centerline, up to 10' AGL/653' MSL. Sign, vehicles in parking lots, poles, buildings, and trees beginning 641' from DER, 335' left of centerline, up to 34' AGL/693' MSL. Sign, vehicles on road and in parking lots, poles, buildings, and trees beginning 651' from DER, 455' right of centerline, up to 37' AGL/696' MSL. Buildings, poles, and trees beginning 1597' from DER, 3' right of centerline, up to 54' AGL/723' MSL. Buildings, poles, and trees beginning 1667' from DER, 4' left of centerline, up to 47' AGL/716' MSL.

MCKINNEY NATIONAL (TKI)

TAKEOFF MINIMUMS AND (OBSTACLE)

DEPARTURE PROCEDURES

AMDT 2A 16175 (FAA)

TAKEOFF OBSTACLE NOTES: **Rwy 18**, tree 2445' from DER, 689' right of centerline, 70' AGL/653' MSL. **Rwy 36**, tree 1126' from DER, 703' right of centerline, 35' AGL/610' MSL.

06 DEC 2018 to 03 JAN 2019

06 DEC 2018 to 03 JAN 2019

TAKEOFF MINIMUMS, (OBSTACLE) DEPARTURE PROCEDURES, AND DIVERSE VECTOR AREA (RADAR VECTORS)

18312

SC-2

TAKEOFF MINIMUMS, (OBSTACLE) DEPARTURE PROCEDURES, AND DIVERSE VECTOR AREA (RADAR VECTORS)

18312

DALLAS, TX (CON'T)

DALLAS EXECUTIVE (RBD)

TAKEOFF MINIMUMS AND (OBSTACLE)
DEPARTURE PROCEDURES
AMDT 8 18312 (FAA)

TAKEOFF MINIMUMS: **Rwy 17**, 400-2¼ or std. w/min.
climb of 220' per NM to 1200.

DEPARTURE PROCEDURE: **Rwy 13**, climb heading 129°
to 1800 before turning westbound. **Rwy 17**, climb heading
174° to 2600 before turning westbound. **Rwy 31**, climb
heading 309° to 1500 before turning southbound. **Rwy 35**,
climb heading 354° to 1400 before turning southbound.

TAKEOFF OBSTACLE NOTES: **Rwy 13**, lighting 19' from
DER, 116' left of centerline, 7' AGL/653' MSL. Lighting 20'
from DER, 115' right of centerline, 6' AGL/651' MSL.
Fence 108' from DER, 347' left of centerline, 10' AGL/658'
MSL. **Rwy 17**, lighting 39' from DER, 116' right of
centerline, 663' MSL. Lighting 40' from DER, 160' left of
centerline, 5' AGL/664' MSL. Tree 62' from DER, 436' left
of centerline, 688' MSL. Trees beginning 119' from DER,
301' right of centerline, up to 684' MSL. Trees beginning
122' from DER, 404' left of centerline, up to 41' AGL/692'
MSL. Trees beginning 365' from DER, 340' left of
centerline, up to 702' MSL. Tower 2.2 NM from DER, 598'
left of centerline, 310' AGL/1024' MSL. Antenna 2.2 NM
from DER, 583' left of centerline, 312' AGL/1026' MSL.
Rwy 31, tree 46' from DER, 256' left of centerline, 681'
MSL. Trees beginning 81' from DER, 267' left of
centerline, up to 683' MSL. Tree 159' from DER, 296' right
of centerline, 672' MSL. Trees beginning 186' from DER,
304' left of centerline, up to 33' AGL/699' MSL. Trees
beginning 347' from DER, 297' left of centerline, up to 700'
MSL. Trees beginning 583' from DER, 72' right of
centerline, up to 703' MSL. Tree 1818' from DER, 745' left
of centerline, 722' MSL. Tree 2326' from DER, 802' left of
centerline, 738' MSL. Tree 2535' from DER, 829' left of
centerline, 740' MSL. **Rwy 35**, terrain 4' from DER, 10'
right of centerline, 651' MSL. Trees, lighting beginning 9'
from DER, 118' left of centerline, up to 37' AGL/675' MSL.
Lighting 41' from DER, 159' right of centerline, 656' MSL.
Building, trees beginning 82' from DER, 309' right of
centerline, up to 671' MSL. Trees beginning 231' from
DER, 521' left of centerline, up to 679' MSL. Trees
beginning 402' from DER, 370' left of centerline, up to 680'
MSL. Trees beginning 980' from DER, 284' right of
centerline, up to 682' MSL. Tree 1288' from DER, 779'
right of centerline, 685' MSL. Trees beginning 1386' from
DER, 704' right of centerline, up to 691' MSL.

DALLAS-LOVE FIELD (DAL)

TAKEOFF MINIMUMS AND (OBSTACLE)
DEPARTURE PROCEDURES
AMDT 17 17229 (FAA)

TAKEOFF MINIMUMS: **Rwy 13L**, std. w/min. climb of 290'
per NM to 1700. **Rwy 13R**, std. w/min. climb of 320' per
NM to 1700.

DEPARTURE PROCEDURE: **Rwy 31L/R**, climb heading
313° to 1300 before turning left.

TAKEOFF OBSTACLE NOTES: **Rwy 13L**, pole 844' from
DER, 637' left of centerline, 31' AGL/521' MSL. Pole 1166'
from DER, 604' left of centerline, 32' AGL/525' MSL. **Rwy
13R**, pole 662' from DER, 601' right of centerline, 29'
AGL/501' MSL. Sign 778' from DER, 669' left of centerline,
30' AGL/503' MSL. Sign 1423' from DER, 763' left of
centerline, 42' AGL/516' MSL. Stack 2234' from DER, 979'
left of centerline, 62' AGL/537' MSL. **Rwy 31L**, lights 10'
from DER, 55' left and 55' right of centerline, 1' AGL/477'
MSL. **Rwy 31R**, pole 39' from DER, 500' left of centerline,
27' AGL/487' MSL. Pole 1531' from DER, 720' right of
centerline, 61' AGL/521' MSL.

DALLAS-FORT WORTH, TX

DALLAS-FORT WORTH INTL (DFW)

TAKEOFF MINIMUMS AND (OBSTACLE)

DEPARTURE PROCEDURES

AMDT 6 14261 (FAA)

TAKEOFF MINIMUMS: **Rwy 35R**, 300 - 1½ or std. w/min.
climb of 221' per NM to 800, or alternatively, with
standard takeoff minimums and a normal 200' per NM
climb gradient, takeoff must occur no later than 1700'
prior to DER.

DEPARTURE PROCEDURE: **Rwy 35R**, climb heading
356° to 1200 before proceeding on course.

TAKEOFF OBSTACLE NOTES: **Rwy 31L**, trees
beginning 928' from DER, 724' left of centerline, up to 55'
AGL/654' MSL. Trees 1229' from DER, 729' right of
centerline, up to 28' AGL/637' MSL. Transmission poles
and towers beginning 3402' from DER, 1398' right of
centerline, up to 110' AGL/730' MSL. **Rwy 31R**, building
732' from DER, 633' left of centerline, 34' AGL/604' MSL.
Rwy 35R, building 5466' from DER, 758' right of
centerline, 135' AGL/674' MSL. Building 1.1 NM from
DER, 240' right of centerline, 173' AGL/714' MSL.

DECATUR, TX

DECATUR MUNI (LUD)

TAKEOFF MINIMUMS AND (OBSTACLE)

DEPARTURE PROCEDURES

AMDT 3 14261 (FAA)

TAKEOFF MINIMUMS: **Rwy 35**, std. w/min. climb of 320'
per NM to 3500, or 1600-3 for climb in visual conditions.
DEPARTURE PROCEDURE: **Rwy 17**, climb heading 163°
to 1700 before proceeding North. **Rwy 35**, obtain ATC
approval for climb in visual conditions when requesting
IFR clearance. Climb in visual conditions to cross
Decatur Muni airport at or above 2500 before proceeding
on course.

TAKEOFF OBSTACLE NOTES: **Rwy 17**, trees and poles
beginning 120' from DER, 372' left of centerline, up to 51'
AGL/1071' MSL. Terrain and trees beginning 327' from
DER, 452' right of centerline, up to 18' AGL/1067' MSL.
Poles 766' from DER, 45' right of centerline, up to 33'
AGL/1065' MSL. Poles 2287' from DER, 662' left of
centerline, up to 54' AGL/1095' MSL. Stacks and
buildings beginning 2495' from DER, 786' right of
centerline, up to 62' AGL/1112' MSL. Tower 5149' from
DER, 895' right of centerline, 117' AGL/1173' MSL. **Rwy
35**, trees beginning 378' from DER, 276' right of
centerline, up to 31' AGL/1050' MSL.

DENTON, TX

DENTON ENTERPRISE (DTO)

TAKEOFF MINIMUMS AND (OBSTACLE)

DEPARTURE PROCEDURES

AMDT 3A 16175 (FAA)

TAKEOFF OBSTACLE NOTES: **Rwy 18**, vehicles on road
beginning 36' from DER, 274' left of centerline, up to 10'
AGL/636' MSL. Trees beginning 8' from DER, 381' right
of centerline, up to 27' AGL/636' MSL. **Rwy 36**, trees
beginning 88' from DER, 218' right of centerline, up to 17'
AGL/646' MSL. Trees 123' from DER, 217' left of
centerline, up to 22' AGL/652' MSL. Trees beginning 574'
from DER, 517' right of centerline, up to 43' AGL/682'
MSL. Trees beginning 864' from DER, 497' left of
centerline, up to 43' AGL/672' MSL.

TAKEOFF MINIMUMS, (OBSTACLE) DEPARTURE PROCEDURES, AND DIVERSE VECTOR AREA (RADAR VECTORS)

18312

**TAKEOFF MINIMUMS, (OBSTACLE) DEPARTURE PROCEDURES, AND
DIVERSE VECTOR AREA (RADAR VECTORS)**

18312

DUMAS, TX**MOORE COUNTY (DUX)****TAKEOFF MINIMUMS AND (OBSTACLE)****DEPARTURE PROCEDURES**

ORIG 10042 (FAA)

TAKEOFF OBSTACLE NOTES: **Rwy 1**, multiple poles beginning 766' from DER, 455' right of centerline, up to 31' AGL/3724' MSL. Multiple poles and buildings beginning 55' from DER, 438' left of centerline, up to 30' AGL/3723' MSL. Vehicle on road 47' from DER, on centerline, 15' AGL/3712' MSL. Trees 1240' from DER, 764' left of centerline, up to 100' AGL/3789' MSL. Trees 2049' from DER, 933' right of centerline, up to 100' AGL/3790' MSL. **Rwy 19**, trees 226' from DER, 538' right of centerline, up to 100' AGL/3809' MSL. Trees 228' from DER, 533' left of centerline, up to 100' AGL/3804' MSL. **Rwy 14**, tree 879' from DER, on centerline, 100' AGL/3788' MSL. **Rwy 32**, tree 1480' from DER, 15' left of centerline, 100' AGL/3794' MSL.

EASTLAND, TX**EASTLAND MUNI (ETN)****TAKEOFF MINIMUMS AND (OBSTACLE)****DEPARTURE PROCEDURES**

AMDT 1 11013 (FAA)

TAKEOFF MINIMUMS: **Rwy 35**, std. w/ min. climb of 215' per NM to 2300 or alternatively, with standard takeoff minimums and normal 200' per NM climb gradient, takeoff must occur no later than 1100' prior to DER, or 1000-3 for climb in visual conditions.

DEPARTURE PROCEDURE: **Rwy 17**, climb heading 175° to 2000' before turning East. **Rwy 35**, for climb in visual conditions: cross Eastland Muni at or above 2300 MSL before proceeding on course.

TAKEOFF OBSTACLE NOTES: **Rwy 17**, tree 48' from DER, 317' left of centerline, 27' AGL/1466' MSL, tree 521' from DER, 541' left of centerline, 34' AGL/1465' MSL. Tree 896' from DER, 408' left of centerline, 55' AGL/1482' MSL, pole 460' from DER, 439' left of centerline, 21' AGL/1457' MSL. Pole 640' from DER, 466' left of centerline, 31' AGL/1463' MSL. Pole 650' from DER, 277' left of centerline, 28' AGL/1465' MSL. Numerous trees and bushes beginning 15' from DER, 248' right of center line, up to 100' AGL/1488' MSL. Fence 81' from DER, 250' right of centerline, 4' AGL/1449' MSL. Train on rail 497' from DER left and right of centerline, 23' AGL/1463' MSL. **Rwy 35**, numerous trees beginning 38' from DER, right and left of center line, up to 100' AGL/1580' MSL. Numerous poles starting 1188' from DER, 64' right of centerline, up to 40' AGL/1588' MSL. Pole 1683' from DER, 51' left of centerline, 21' AGL/1568' MSL, pole 2610' from DER, 166' left of centerline, 20' AGL/1561' MSL. Catenary 1068' from DER, left to right of centerline, 52' AGL/1581' MSL, ground 76' from DER, left and right of centerline, 1565' MSL. Vehicle on road 1291' from DER, left and right of centerline, 15' AGL/1572' MSL, oil well 1287' from DER, 293' left of centerline, 16' AGL/1519' MSL, oil well 2033' from DER, 499' right of centerline, 14' AGL/1531' MSL.

ENNIS, TX**ENNIS MUNI (F41)****TAKEOFF MINIMUMS AND (OBSTACLE)****DEPARTURE PROCEDURES**

ORIG 11125 (FAA)

TAKEOFF OBSTACLE NOTES: **Rwy 15**, vehicle on road 362' from DER, 561' right of centerline, 15' AGL/ 494' MSL. Trees beginning 870' from DER, left and right of centerline, up to 100' AGL/ 579' MSL. **Rwy 33**, vehicles on road beginning 423' from DER, left and right of centerline, up to 15' AGL/534' MSL. Trees beginning 40' from DER, left and right of centerline, up to 100' AGL/609' MSL.

FLOYDADA, TX**FLOYDADA MUNI (41F)****TAKEOFF MINIMUMS AND (OBSTACLE)****DEPARTURE PROCEDURES**

ORIG 09295 (FAA)

TAKEOFF OBSTACLE NOTES: **Rwy 17**, silo 3320' from DER, 355' right of centerline, 149' AGL/3329' MSL. Building 3648' from DER, 248' right of centerline, 108' AGL/3289' MSL. **Rwy 35**, road and vehicle beginning 525' from DER, 19' left and right of centerline, up to 15' AGL/3202' MSL.

FOLLETT, TX**FOLLETT-LIPSCOMB COUNTY (T93)****TAKEOFF MINIMUMS AND (OBSTACLE)****DEPARTURE PROCEDURES**

ORIG 10154 (FAA)

TAKEOFF OBSTACLE NOTES: **Rwy 17**, tree 3005' from DER, 346' right of centerline, 50' AGL/2689' MSL. Tree 444' from DER, 595' left of centerline, 50' AGL/2639' MSL. Vehicle 546' from DER, 350' left of centerline, 15' AGL/2624' MSL. **Rwy 35**, tree 643' from DER, 624' right of centerline, 50' AGL/2579' MSL.

06 DEC 2018 to 03 JAN 2019

06 DEC 2018 to 03 JAN 2019

**TAKEOFF MINIMUMS, (OBSTACLE) DEPARTURE PROCEDURES, AND
DIVERSE VECTOR AREA (RADAR VECTORS)**

18312

SC-2

TAKEOFF MINIMUMS, (OBSTACLE) DEPARTURE PROCEDURES, AND DIVERSE VECTOR AREA (RADAR VECTORS)

18312

FORT WORTH, TX

BOURLAND FIELD (50F)

TAKEOFF MINIMUMS AND (OBSTACLE) DEPARTURE PROCEDURES

AMDT 2 14261 (FAA)

TAKEOFF MINIMUMS: **Rwy 17**, 300-2 or std. w/min.
climb of 512' per NM to 1300.

DEPARTURE PROCEDURE: **Rwy 17**, climb heading
165° to 1400 before turning right.

TAKEOFF OBSTACLE NOTES: **Rwy 17**, trees

beginning 9' from DER, 87' right of centerline, up to 60'

AGL/886' MSL. Trees beginning 17' from DER, 113'

left of centerline, up to 57' AGL/886' MSL. Trees 188'

from DER, 28' left of centerline, up to 15' AGL/844'

MSL. Terrain, pole, vehicles on road, and trees

beginning 680' from DER, 15' right of centerline, up to

38' AGL/988' MSL. Terrain, vehicles on road, and

trees beginning 871' from DER, 10' left of centerline,

up to 47' AGL/987' MSL. Trees 2723' from DER, 533'

right of centerline, up to 32' AGL/1011' MSL.

Transmission tower 1.4 NM from DER, 2471' right of

centerline, 123' AGL/1123' MSL. Transmission tower

1.5 NM from DER, 2849' right of centerline, 93'

AGL/1092' MSL. **Rwy 35**, terrain, fences, vehicles in

parking lot, vehicles on road, signs, poles, and trees

beginning 22' from DER, 30' left of centerline, up to 26'

AGL/935' MSL. Terrain, fences, vehicles on road,

poles, trees, and signs beginning 165' from DER, 42'

right of centerline, up to 42' AGL/925' MSL. Terrain,

vehicles in parking lot, vehicles on road, and trees

beginning 1013' from DER, 29' right of centerline, up to

15' AGL/956' MSL. Terrain, vehicles in parking lot,

vehicles on road, and trees beginning 2606' from DER,

328' right of centerline, up to 16' AGL/995' MSL.

Terrain, vehicles in parking lot, vehicles on road, and

trees beginning 2433' from DER, 663' left of centerline,

up to 17' AGL/1006' MSL.

FORT WORTH ALLIANCE (AFW)

TAKEOFF MINIMUMS AND (OBSTACLE) DEPARTURE PROCEDURES

AMDT 2 18088 (FAA)

TAKEOFF MINIMUMS: **Rwy 16L, 16R**, 300-2¼ or std.
w/min. climb of 220' per NM to 1100, or alternatively
with std. takeoff minimums and a normal 200' per NM
climb gradient, takeoff must occur no later than 1900
feet prior to DER.

DEPARTURE PROCEDURE: **Rwy 16R**, climb heading
166° to 1100 before turning right.

TAKEOFF OBSTACLE NOTES: **Rwy 16L**, vehicles on

road beginning 59' from DER, 481' left of centerline, up

to 677' MSL. Multiple poles beginning 1069' from DER,

689' left of centerline, up to 43' AGL/700' MSL. Water

tower 1.7 NM from DER, 3109' right of centerline, 154'

AGL/961' MSL. **Rwy 16R**, fence 3' from DER, 249'

right of centerline, 8' AGL/669' MSL. Vehicles on road

beginning 5' from DER, 10' right of centerline, up to

677' MSL. Pole 1303' from DER, 518' right of

centerline, 36' AGL/698' MSL. Pole 1579' from DER,

876' right of centerline, 37' AGL/709' MSL. Water

tower 1.7 NM from DER, 2509' right of centerline, 154'

AGL/961' MSL.

FORT WORTH, TX (CON'T)

FORT WORTH MEACHAM INTL (FTW)

TAKEOFF MINIMUMS AND (OBSTACLE) DEPARTURE PROCEDURES

AMDT 8 18312 (FAA)

TAKEOFF MINIMUMS: **Rwy 34**, 300-2 or std. w/min.

climb of 225' per NM to 1100, or alternatively, with std.

takeoff minimums and a normal 200' per NM climb

gradient, takeoff must occur no later than 2000' prior to

DER. **Rwy 35**, 300-1¼ or std. w/min. climb of 210' per

NM to 900, or alternatively, with std. takeoff minimums

and a normal 200' per NM climb gradient, takeoff must

occur no later than 1200' prior to DER.

DEPARTURE PROCEDURE: **Rwy 16**, climb heading 166°

to 1600 before proceeding on course. **Rwy 17**, climb

heading 164° to 1600 before proceeding on course.

TAKEOFF OBSTACLE NOTES: **Rwy 16**, traverse way

587' from DER, 644' left of centerline, 689' MSL. **Rwy 17**,

vegetation 16' from DER, 159' right of centerline, 674'

MSL. Pole 140' from DER, 454' left of centerline, 34'

AGL/677' MSL. Trees and building beginning 506' from

DER, 464' left of centerline, up to 69' AGL/718' MSL.

Tower, antennas, pole, and buildings beginning 956'

from DER, 374' left of centerline, up to 59' AGL/722'

MSL. **Rwy 34**, traverse ways beginning 5' from DER,

236' left of centerline, up to 722' MSL. Tree and poles

beginning 974' from DER, 681' right of centerline, up to

746' MSL. Pole 2351' from DER, 986' right of centerline,

39' AGL/770' MSL. Pole 2469' from DER, 1138' right of

centerline, 35' AGL/774' MSL. Pole 2628' from DER,

1167' right of centerline, 47' AGL/787' MSL. Elevator and

building beginning 1.5 NM from DER, 2768' right of

centerline, 254' AGL/970' MSL. **Rwy 35**, trees and

traverse way beginning 0' from DER, 248' left of

centerline, up to 690' MSL. Terrain beginning 19' from

DER, 342' right of centerline, up to 687' MSL. Trees

beginning 302' from DER, 479' left of centerline, up to 51'

AGL/691' MSL. Traverse way, terrain, poles, and fence

beginning 328' from DER, 229' right of centerline, up to

697' MSL. Terrain 978' from DER, 695' right of

centerline, 701' MSL. Traverse way, terrain, and fence

beginning 990' from DER, 661' right of centerline, up to

713' MSL. Traverse way, fence, and terrain beginning

1008' from DER, 118' right of centerline, up to 714' MSL.

Tree 1342' from DER, 838' left of centerline, 29'

AGL/705' MSL. Traverse way and dam beginning 1343'

from DER, 1' right of centerline, up to 715' MSL. Sign

1531' from DER, 282' left of centerline, 6' AGL/707' MSL.

Traverse way beginning 1584' from DER, 718' right of

centerline, 620' MSL. Pole 3020' from DER, 1209' left of

centerline, 62' AGL/755' MSL. Transmission line

beginning 6006' from DER, 1288' left of centerline, up to

99' AGL/821' MSL. Transmission line 1 NM from DER,

1957' left of centerline, 98' AGL/826' MSL.

FORT WORTH SPIKES (FWS)

TAKEOFF MINIMUMS AND (OBSTACLE) DEPARTURE PROCEDURES

AMDT 3 07298 (FAA)

TAKEOFF MINIMUMS: **Rwys 17L, 35R**, NA.

(Environmental)

DEPARTURE PROCEDURE: **Rwy 17R**, climb heading

173° to 1200 before turning right.

TAKEOFF OBSTACLE NOTES: **Rwy 17R**, tree 4909'

from DER, 1556' left of centerline, 60' AGL/830' MSL.

TAKEOFF MINIMUMS, (OBSTACLE) DEPARTURE PROCEDURES, AND DIVERSE VECTOR AREA (RADAR VECTORS)

18312

**TAKEOFF MINIMUMS, (OBSTACLE) DEPARTURE PROCEDURES, AND
DIVERSE VECTOR AREA (RADAR VECTORS)**

18312

FORT WORTH, TX (CON'T)

KENETH COPELAND (4T2)

TAKEOFF MINIMUMS AND (OBSTACLE)
DEPARTURE PROCEDURES
ORIG 17005 (FAA)

TAKEOFF OBSTACLE NOTES: **Rwy 17**, trees, wall, and rd beginning 7' from DER, 65' right of centerline, up to 79' AGL/732' MSL. Wsk, grd, and trees beginning 46' from DER, 214' left of centerline, up to 24' AGL/685' MSL. Trees beginning 470' from DER, 291' left of centerline, up to 41' AGL/710' MSL. Trees beginning 1902' from DER, 390' left of centerline, up to 79' AGL/727' MSL. Trees beginning 1986' from DER, 559' left of centerline, up to 82' AGL/729' MSL. Trees beginning 2382' from DER, 885' left of centerline, up to 86' AGL/742' MSL. **Rwy 35**, wall 2' from DER, 228' right of centerline, 3' AGL/691' MSL. Grd 7' from DER, 189' left of centerline, 1' AGL/689' MSL. Grd beginning 8' from DER, 359' right of centerline, up to 698' MSL. Tree 53' from DER, 354' left of centerline, 21' AGL/700' MSL. Trees, grd beginning 117' from DER, 200' right of centerline, up to 30' AGL/716' MSL. Rd, trees beginning 241' from DER, 271' right of centerline, up to 20' AGL/719' MSL. Trees beginning 285' from DER, 487' left of centerline, up to 43' AGL/714' MSL. Trees beginning 913' from DER, 610' right of centerline, up to 44' AGL/726' MSL. Trees beginning 1000' from DER, 235' right of centerline, up to 44' AGL/728' MSL. Trees beginning 2040' from DER, 99' left of centerline, up to 99' AGL/751' MSL.

FORT WORTH NAS JRB

(CARSWELL FLD) (KNFW)

FORT WORTH, TX

TAKEOFF MINIMUMS AND (OBSTACLE)
DEPARTURE PROCEDURES
18144

Rwy 18, cross DER at or above 6' AGL/656' MSL.
TAKEOFF OBSTACLE NOTES: **Rwy 18**, rising terrain 200'-600' from DER, 500'-560' right of centerline, up to 670' MSL.

GAINESVILLE, TX

GAINESVILLE MUNI (GLE)

TAKEOFF MINIMUMS AND (OBSTACLE)
DEPARTURE PROCEDURES
AMDT 1 17005 (FAA)

TAKEOFF OBSTACLE NOTES: **Rwy 13**, trees beginning 13' from DER, 147' left of centerline, up to 12' AGL/804' MSL. Tree 185' from DER, 513' left of centerline, 18' AGL/809' MSL. **Rwy 18**, REIL 41' from DER, 126' right of centerline, 2' AGL/794' MSL. REIL 42' from DER, 125' left of centerline, 3' AGL/794' MSL. Tree 85' from DER, 468' left of centerline, 24' AGL/815' MSL. Tree and poles beginning 156' from DER, 502' left of centerline, up to 32' AGL/822' MSL. Vent on bldg and poles beginning 478' from DER, 500' left of centerline, up to 827' MSL. **Rwy 31**, tree 18' from DER, 237' right of centerline, 22' AGL/847' MSL. Trees beginning 23' from DER, 271' right of centerline, up to 24' AGL/850' MSL. Trees and fence beginning 148' from DER, 335' right of centerline, up to 28' AGL/855' MSL. Vent on bldg 613' from DER, 641' left of centerline, 854' MSL. Vent on bldg and bldgs beginning 737' from DER, 524' left of centerline, up to 857' MSL. Trees beginning 1610' from DER, 519' left of centerline, up to 873' MSL. Trees beginning 1711' from DER, 114' left of centerline, up to 64' AGL/885' MSL. Trees beginning 1824' from DER, 29' left of centerline, up to 886' MSL. Trees beginning 1940' from DER, 52' left of centerline, up to 76' AGL/890' MSL. Trees beginning 1990' from DER, 8' left of centerline, up to 77' AGL/895' MSL. Tree 2227' from DER, 142' right of centerline, 68' AGL/885' MSL. Tree 2597' from DER, 674' right of centerline, 69' AGL/893' MSL. **Rwy 36**, REIL 37' from DER, 124' left of centerline, 3' AGL/847' MSL. REIL 37' from DER, 124' right of centerline, 3' AGL/847' MSL. Bush, grd, and fence beginning 115' from DER, 299' right of centerline, up to 868' MSL. Fence and grd beginning 150' from DER, 417' left of centerline, up to 5' AGL/864' MSL. Tree, bush, and grd beginning 337' from DER, 369' left of centerline, up to 865' MSL. Fence and grd beginning 596' from DER, 400' left of centerline, up to 868' MSL. Bush 799' from DER, 514' right of centerline, 871' MSL. Fence 806' from DER, 364' left of centerline, 869' MSL. Tree 947' from DER, 429' right of centerline, 873' MSL. Tree 1060' from DER, 459' left of centerline, 878' MSL. Poles and trees beginning 1233' from DER, 57' left of centerline, up to 31' AGL/890' MSL. Poles and tree beginning 1289' from DER, 131' right of centerline, up to 33' AGL/882' MSL. Tree 2642' from DER, 466' left of centerline, 922' MSL.

06 DEC 2018 to 03 JAN 2019

06 DEC 2018 to 03 JAN 2019

**TAKEOFF MINIMUMS, (OBSTACLE) DEPARTURE PROCEDURES, AND
DIVERSE VECTOR AREA (RADAR VECTORS)**

18312

SC-2

**TAKEOFF MINIMUMS, (OBSTACLE) DEPARTURE PROCEDURES, AND
DIVERSE VECTOR AREA (RADAR VECTORS)**

18312

GILMER, TX

FOX STEPHENS FIELD-GILMER MUNI
(JX1)

TAKEOFF MINIMUMS AND (OBSTACLE)
DEPARTURE PROCEDURES

AMDT 1 13262 (FAA)

TAKEOFF MINIMUMS: **Rwy 18**, 300-1 or std. w/min.
climb of 445' per NM to 700.

DEPARTURE PROCEDURE: **Rwy 18**, climb heading
177° to 1000 before turning left.

TAKEOFF OBSTACLE NOTES: **Rwy 18**, trees
beginning 262' from DER, 226' left of centerline, up to
100' AGL/529' MSL. Trees beginning 495' from DER,
125' right of centerline, up to 100' AGL/569' MSL.

Rwy 36, trees beginning 12' from DER, 131' left of
centerline, up to 100' AGL/510' MSL. Trees beginning
236' from DER, 34' right of centerline, up to 100'
AGL/509' MSL. Tree 2400' from DER, 436' left of
centerline, 100' AGL/519' MSL. Light tower 2806' from
DER, 825' right of centerline, 150' AGL/540' MSL.
Light tower 3277' from DER, 1284' right of centerline,
150' AGL/546' MSL. Tree 3820' from DER, 728' left of
centerline, 100' AGL/539' MSL.

GLADEWATER, TX

GLADEWATER MUNI (07F)

TAKEOFF MINIMUMS AND (OBSTACLE)
DEPARTURE PROCEDURES

AMDT 1 11153 (FAA)

TAKEOFF MINIMUMS: **Rwy 17**, 300-1¾ or std. w/min.
climb of 285' per NM to 600. **Rwy 32**, 300-1. **Rwy 35**,
Std. w/min. climb of 280' per NM to 1300 or 1100-2 ½
for climb in visual conditions.

DEPARTURE PROCEDURE: **Rwy 32**, climb heading
320° to 1100 before turning right. **Rwy 35**, for climb in
visual conditions cross Gladewater Municipal Airport at
or above 1200 before proceeding on course.

TAKEOFF OBSTACLE NOTES: **Rwy 14**, vehicles on
roadway beginning 450' from DER, left and right of
centerline, up to 17' AGL/311' MSL. Trees beginning
770' from DER, left and right of centerline, up to 100'
AGL/394' MSL. Power lines 3524' from DER, left to
right of centerline, 150' AGL/420' MSL. **Rwy 17**,
vehicles on roadway beginning 212' from DER, left and
right of centerline, up to 17' AGL/311' MSL. Trees
beginning 624' from DER, left and right of centerline,
up to 100' AGL/509' MSL. Power lines 1807' from
DER, left to right of centerline, 150' AGL/439' MSL.
Rwy 32, trees beginning 12' from DER, left and
right of centerline, up to 100' AGL/429' MSL. **Rwy 35**,
trees beginning 47' from DER, left and right of
centerline, up to 100' AGL/429' MSL. Power lines 1.4
NM from DER, 844' right of centerline, 75' AGL/520'
MSL.

GRAFORD, TX

POSSUM KINGDOM (F35)

TAKEOFF MINIMUMS AND (OBSTACLE)
DEPARTURE PROCEDURES

ORIG-A 10154 (FAA)

TAKEOFF MINIMUMS: **Rwy 20**, 400-2½ or std. w/ a min.
climb of 212' per NM to 1500 or alternatively, with
standard takeoff minimums and a normal 200' per NM
climb gradient, takeoff must occur no later than 1600'
prior to DER.

DEPARTURE PROCEDURE: **Rwy 20**, climb heading 204°
to 1500 before turning left.

TAKEOFF OBSTACLE NOTES: **Rwy 2**, trees beginning
31' from DER, 22' left of centerline, up to 100' AGL/1099'
MSL. Trees beginning 1023' from DER, 114' right of
centerline, up to 100' AGL/1129' MSL. **Rwy 20**, vehicle
on roadway 116' from DER, 498' right of centerline, 15'
AGL/1024' MSL. Trees beginning 494' from DER, 126'
right of centerline, up to 100' AGL/1109' MSL. Trees
beginning 977' from DER, 115' left of centerline, up to
100' AGL/1109' MSL. Trees beginning 2.29 miles from
DER, 1679' left of centerline, up to 100' AGL/1329' MSL.

GRAHAM, TX

GRAHAM MUNI (RPH)

TAKEOFF MINIMUMS AND (OBSTACLE)
DEPARTURE PROCEDURES

AMDT 2A 01235 (FAA)

DEPARTURE PROCEDURE: **Rwys 17, 21**, climb runway
heading to 2000 before proceeding on course.

TAKEOFF OBSTACLE NOTES: **Rwy 17**, light pole 21'
from DER, 195' left of centerline, 30' AGL/1141' MSL.
Light pole 86' from DER, 381' left of centerline, 50'
AGL/1168' MSL.

GRANBURY, TX

GRANBURY RGNL (GDJ)

TAKEOFF MINIMUMS AND (OBSTACLE)
DEPARTURE PROCEDURES

AMDT 2 11125 (FAA)

TAKEOFF MINIMUMS: **Rwy 14**, 300-1.

DEPARTURE PROCEDURE: **Rwy 14**, climb heading 144°
to 1700 before turning right.

TAKEOFF OBSTACLE NOTES: **Rwy 14**, vehicles on road
beginning 1020' from DER, on centerline, 15' AGL/814'
MSL. Trees and power poles beginning at DER, 75' right
of centerline, up to 100' AGL/879' MSL. Trees, power
poles, light poles and vehicles on road beginning at DER,
251' left of centerline, up to 100' AGL/899' MSL. **Rwy 32**,
train on railroad tracks, transmission poles and tree
beginning 339' from DER, 107' right of centerline,
76' AGL/845' MSL. Trees, vehicles on road and bush
beginning 14' from DER, 198' left of centerline, up to 46'
AGL/815' MSL.

**TAKEOFF MINIMUMS, (OBSTACLE) DEPARTURE PROCEDURES, AND
DIVERSE VECTOR AREA (RADAR VECTORS)**

18312

**TAKEOFF MINIMUMS, (OBSTACLE) DEPARTURE PROCEDURES, AND
DIVERSE VECTOR AREA (RADAR VECTORS)**

18312

GRAND PRAIRIE, TX

GRAND PRAIRIE MUNI (GPM)
TAKEOFF MINIMUMS AND (OBSTACLE)
DEPARTURE PROCEDURES
AMDT 5 14261 (FAA)
DEPARTURE PROCEDURE: **Rwy 17**, climb heading 189° to 2500 before proceeding on course. **Rwy 35**, climb heading 354° to 1400 before turning southbound.
TAKEOFF OBSTACLE NOTES: **Rwy 17**, antenna, tower, vehicles on road, sign, pole, and trees beginning 190' from DER, 410' right of centerline, up to 37' AGL/620' MSL. **Rwy 35**, pole 2686' from DER, 121' left of centerline, 75' AGL/653' MSL.

GREENVILLE, TX

MAJORS (GVT)
TAKEOFF MINIMUMS AND (OBSTACLE)
DEPARTURE PROCEDURES
AMDT 1 08269 (FAA)
TAKEOFF OBSTACLE NOTES: **Rwy 17**, trees beginning 1832' from DER, 397' right of centerline, up to 49' AGL/578' MSL.

GRUVER, TX

GRUVER MUNI (E19)
TAKEOFF MINIMUMS AND (OBSTACLE)
DEPARTURE PROCEDURES
ORIG 11293 (FAA)
TAKEOFF OBSTACLE NOTES: **Rwy 2**, fence beginning 10' from DER, 284' right of centerline, 4' AGL/3191' MSL. **Rwy 20**, vehicle on road 87' from DER, 467' left of centerline, 15' AGL/3219' MSL. Fence beginning 22' from DER, 204' right of centerline, 4' AGL/3209' MSL.

HASKELL, TX

HASKELL MUNI (15F)
TAKEOFF MINIMUMS AND (OBSTACLE)
DEPARTURE PROCEDURES
AMDT 1 91094 (FAA)
TAKEOFF MINIMUMS: **Rwy 18**, 600-2 or std. with a min. climb of 340' per NM to 2300.
DEPARTURE PROCEDURE: **Rwy 18**, climb runway heading to 2300 before proceeding on course.

HENDERSON, TX

RUSK COUNTY (RFI)
TAKEOFF MINIMUMS AND (OBSTACLE)
DEPARTURE PROCEDURES
AMDT 2 10098 (FAA)
TAKEOFF MINIMUMS: **Rwy 12**, 300-1. **Rwy 30**, 300-1¼ or std. w/ min. climb of 282' per NM to 700.
DEPARTURE PROCEDURE: **Rwy 12**, climb heading 123° to 1100 before turning northbound. **Rwy 30**, climb heading 303° to 2100 before turning northbound.
Rwy 35, climb heading 347° to 1900 before turning westbound.
TAKEOFF OBSTACLE NOTES: **Rwy 12**, multiple trees beginning 143' from DER, 440' right of centerline, up to 100' AGL/549' MSL. Multiple trees beginning 237' from DER, 59' left of centerline, up to 100' AGL/609' MSL. Vehicle on road beginning 652' from DER, 401' left of centerline, up to 15' AGL/464' MSL. Terrain beginning 82' from DER, 18' right of centerline 447' MSL. terrain beginning 291' from DER, 132' left of centerline, 506' MSL. **Rwy 17**, multiple trees beginning 399' from DER, 86' right of centerline, up to 100' AGL/539' MSL. Multiple trees beginning 163' from DER, 103' left of centerline, up to 100' AGL/549' MSL. **Rwy 30**, multiple trees beginning 640' from DER, 116' right of centerline, up to 100' AGL/539' MSL. Multiple trees beginning 478' from DER, 141' left of centerline, up to 100' AGL/539' MSL. Terrain beginning 41' from DER, 334' right of centerline, 0' AGL/437' MSL. Terrain beginning 102' from DER, 459' left of centerline, 0' AGL/437' MSL. **Rwy 35**, vehicle on road beginning 145' from DER, 333' right of centerline, up to 15' AGL/454' MSL. Trees beginning 1155' from DER, 353' right of centerline, up to 100' AGL/549' MSL. Trees beginning 158' from DER, 269' left of centerline, up to 100' AGL/539' MSL.

HEREFORD, TX

HEREFORD MUNI (HRX)
TAKEOFF MINIMUMS AND (OBSTACLE)
DEPARTURE PROCEDURES
ORIG 10042 (FAA)
TAKEOFF MINIMUMS: **Rwys 14, 32**, NA-Environmental.
TAKEOFF OBSTACLE NOTES: **Rwy 2**, tree 68' from DER, 495' left of centerline, 50' AGL/3834' MSL. Trees beginning 280' from DER, 535' right of centerline, up to 50 AGL/3834' MSL. Trees beginning 984' from DER, 504' left of centerline, up to 50' AGL/3834' MSL. **Rwy 20**, trees beginning 61' from DER, 461' right of centerline, up to 50' AGL/3839' MSL. Trees beginning 497' from DER, 606' left of centerline, up to 50' AGL/3839' MSL. Tree 1603' from DER, 760' right of centerline, 50' AGL/3829' MSL.

HIGGINS, TX

HIGGINS-LIPSCOMB COUNTY (1X1)
TAKEOFF MINIMUMS AND (OBSTACLE)
DEPARTURE PROCEDURES
ORIG 10154 (FAA)
TAKEOFF OBSTACLE NOTES: **Rwy 36**, vehicles on road beginning at DER, 225' left of centerline and 317' right of centerline, up to 15' AGL/2594' MSL. Trees beginning 427' from DER, on centerline, up to 60' AGL/2639' MSL.

**TAKEOFF MINIMUMS, (OBSTACLE) DEPARTURE PROCEDURES, AND
DIVERSE VECTOR AREA (RADAR VECTORS)**

18312

SC-2

TAKEOFF MINIMUMS, (OBSTACLE) DEPARTURE PROCEDURES, AND DIVERSE VECTOR AREA (RADAR VECTORS)

18312

HILLSBORO, TX

HILLSBORO MUNI (INJ)

TAKEOFF MINIMUMS AND (OBSTACLE)

DEPARTURE PROCEDURES

ORIG 06047 (FAA)

TAKEOFF MINIMUMS: **Rwy 16**, 600-3 or std. w/ min. climb of 250' per NM to 1500, or 1100-2 ½ for climb in visual conditions.

DEPARTURE PROCEDURE: **Rwy 16**, for climb in visual conditions: Cross Hillsboro Muni Airport at or above 1600 before proceeding on course.

LANCASTER, TX

LANCASTER RGNL (LNC)

TAKEOFF MINIMUMS AND (OBSTACLE)

DEPARTURE PROCEDURES

AMDT 3 14261 (FAA)

TAKEOFF MINIMUMS: **Rwy 31**, 300-1¼ or std. w/min. climb of 205' per NM to 800, or alternatively, with standard takeoff minimums and a normal 200' per NM climb gradient, takeoff must occur no later than 1200' prior to DER.

DEPARTURE PROCEDURE: **Rwy 31**, climb heading 314° to 1800 before turning left.

TAKEOFF OBSTACLE NOTES: **Rwy 31**, trees 888' from DER, 637' right of centerline, up to 35' AGL/536' MSL. Trees beginning 1133' from DER, 479' left of centerline, up to 45' AGL/541' MSL. Transmission tower 1 NM from DER, 1685' right of centerline, 127' AGL/661' MSL.

LEVELLAND, TX

LEVELLAND MUNI (LLN)

TAKEOFF MINIMUMS AND (OBSTACLE)

DEPARTURE PROCEDURES

AMDT 4 11013 (FAA)

TAKEOFF MINIMUMS: **Rwy 26**, std. w/ min. climb of 255' per NM to 4300 or 900-3 for climb in visual conditions. **Rwy 35**, 400-2 or std. w/ min. climb of 250' per NM to 4000.

DEPARTURE PROCEDURE: **Rwy 26**, for climb in visual conditions cross Levelland Muni airport at or above 4400 before proceeding on course.

TAKEOFF OBSTACLE NOTES: **Rwy 8**, tree 61' from DER, 451' left of centerline, 55' AGL/3564' MSL. **Rwy 26**, pole 53' from DER, 308' right of centerline, 24' AGL/3543' MSL. Tree 265' from DER, 414' right of centerline, 31' AGL/3550' MSL. **Rwy 17**, vehicle on road 4' from DER, 387' left of centerline, 15' AGL/3522' MSL. Vehicle on road 205' from DER, 388' left of centerline, 15' AGL/3521' MSL. Tree 1291' from DER, 188' right of centerline, 55' AGL/3564' MSL. **Rwy 26**, building 1271' from DER, 811' left of centerline, 80' AGL/3593' MSL. **Rwy 35**, building 124' from DER, 492' left of centerline, 29' AGL/3518' MSL. Poles beginning 1186' from DER, 235' left of centerline, up to 54' AGL/3543' MSL. Trees beginning 1250' from DER, left and right of centerline, up to 55' AGL/3561' MSL.

LITTLEFIELD, TX

LITTLEFIELD TAYLOR BROWN MUNI (LIU)

TAKEOFF MINIMUMS AND (OBSTACLE)

DEPARTURE PROCEDURES

ORIG 13178 (FAA)

TAKEOFF OBSTACLE NOTES: **Rwy 1**, trees beginning 391' from DER, 238' right of centerline, up to 55' AGL/3655' MSL. Trees beginning 466' from DER, 277' left of centerline, up to 55' AGL/3655' MSL. **Rwy 13**, power poles beginning 623' from DER, across centerline, up to 35' AGL/3630' MSL. Trees beginning 1080' from DER, 694' left of centerline, up to 55' AGL/3650' MSL. **Rwy 19**, poles beginning 665' from DER, 353' left of centerline, up to 52' AGL/3638' MSL. Trees beginning 715' from DER, 521' left of centerline, up to 61' AGL/3644' MSL. Trees beginning 765' from DER, 576' right of centerline, up to 74' AGL/3657' MSL. **Rwy 31**, vehicle on road 365' from DER, left and right of centerline, up to 15' AGL/3635' MSL.

LONGVIEW, TX

EAST TEXAS RGNL (GGG)

TAKEOFF MINIMUMS AND (OBSTACLE)

DEPARTURE PROCEDURES

AMDT 1 08325 (FAA)

TAKEOFF OBSTACLE NOTES: **Rwy 13**, multiple trees 720' from DER, 547' left of centerline, up to 50' AGL/404' MSL. Multiple trees 1381' from DER, 600' right of centerline, up to 55' AGL/409' MSL. **Rwy 18**, multiple trees beginning 790' from DER, left and right of centerline, up to 94' AGL/459' MSL. **Rwy 31**, tree 1489' from DER, 842' left of centerline, 49' AGL/406' MSL. Tree 1737' from DER, 755' right of centerline, 63' AGL/420' MSL. **Rwy 36**, multiple trees beginning 1590' from DER, 520' left of centerline, up to 84' AGL/438' MSL. Tree 2384' from DER, 18' right of centerline, 65' AGL/419' MSL.

LUBBOCK, TX

LUBBOCK PRESTON SMITH INTL (LBB)

TAKEOFF MINIMUMS AND (OBSTACLE)

DEPARTURE PROCEDURES

AMDT 1 12208 (FAA)

TAKEOFF OBSTACLE NOTES: **Rwy 17L**, Vehicle on road, 556' from DER, 162' left of centerline 15' AGL/3279' MSL. **Rwy 26**, Aircraft on taxiway 1174' from DER, on centerline, 42' AGL/3297' MSL. **Rwy 35R**, Aircraft on taxiway 218' from DER 422' left or right of centerline, 42' AGL/3317' MSL. Rod on control tower, 2330' from DER, 877' left of centerline 136' AGL/3379' MSL.

06 DEC 2018 to 03 JAN 2019

06 DEC 2018 to 03 JAN 2019

TAKEOFF MINIMUMS, (OBSTACLE) DEPARTURE PROCEDURES, AND DIVERSE VECTOR AREA (RADAR VECTORS)

18312

SC-2

TAKEOFF MINIMUMS, (OBSTACLE) DEPARTURE PROCEDURES, AND DIVERSE VECTOR AREA (RADAR VECTORS)

18312

MARSHALL, TX

HARRISON COUNTY (ASL)

TAKEOFF MINIMUMS AND (OBSTACLE)
DEPARTURE PROCEDURES
ORIG 12040 (FAA)

TAKEOFF MINIMUMS: **Rwy 2**, 300-1 or std w/min.
climb of 440' per NM to 600. **Rwy 33**, 300-1¼.

TAKEOFF OBSTACLE NOTES: **Rwy 2**, trees beginning 207' from DER, left and right of centerline, up to 100' AGL/439' MSL. Trees beginning 1281' from DER, 371' right of centerline, up to 100' AGL/489' MSL. Trees beginning 3102' from DER, 163' left of centerline, up to 100' AGL/509' MSL. Power lines beginning 3119' from DER, left and right of centerline, up to 120' AGL/509' MSL. **Rwy 15**, trees beginning 81' from DER, 472' right of centerline, up to 94' AGL/394' MSL. Trees beginning 180' from DER, 212' left of centerline, up to 90' AGL/410' MSL. Trees beginning 1872' from DER, left and right of centerline, up to 121' AGL/401' MSL. **Rwy 20**, numerous trees, buildings, and poles beginning 31' from DER, left and right of centerline, up to 100' AGL/469' MSL. **Rwy 33**, trees beginning 264' from DER, left and right of centerline, up to 100' AGL/459' MSL. Light poles beginning 573' from DER, 365' left of centerline, up to 120' AGL/509' MSL. Power lines beginning 1649' from DER, left and right of centerline, up to 120' AGL/509' MSL. Trees beginning 1953' from DER, left and right of centerline, up to 100' AGL/529' MSL.

MESQUITE, TX

MESQUITE METRO (HQZ)

TAKEOFF MINIMUMS AND (OBSTACLE)
DEPARTURE PROCEDURES
AMDT 4A 15176 (FAA)

TAKEOFF OBSTACLE NOTES: **Rwy 18**, fence and trees beginning abeam DER, 362' left of centerline, up to 5' AGL/447' MSL. Sign, vehicles on road, and trees beginning 254' from DER, 453' left of centerline, up to 49' AGL/478' MSL. **Rwy 36**, trees beginning 45' from DER, 389' right of centerline, up to 29' AGL/452' MSL. Pole 814' from DER, 288' right of centerline, 27' AGL/467' MSL. Building, pole, and trees beginning 53' from DER, 497' left of centerline, up to 41' AGL/483' MSL.

MIDLOTHIAN/WAXAHACHIE, TX

MID-WAY RGNL (JWY)

TAKEOFF MINIMUMS AND (OBSTACLE)
DEPARTURE PROCEDURES
AMDT 2 14261 (FAA)

DEPARTURE PROCEDURE: **Rwy 18**, climb heading 178° to 1700 before proceeding northbound. **Rwy 36**, climb heading 013° to 2700 before turning left.
TAKEOFF OBSTACLE NOTES: **Rwy 18**, vehicles on road, catenaries, and poles beginning 159' from DER, 465' right of centerline, up to 39' AGL/712' MSL. Trees beginning 956' from DER, 594' left of centerline, up to 71' AGL/722' MSL. **Rwy 36**, trees beginning 6' from DER, 334' left of centerline, up to 34' AGL/753' MSL. Trees beginning 82' from DER, 251' right of centerline, up to 40' AGL/759' MSL. Catenaries and trees beginning 1067' from DER, 629' left of centerline, up to 37' AGL/765' MSL.

MINEOLA, TX

MINEOLA WISENER FIELD (3F9)

TAKEOFF MINIMUMS AND (OBSTACLE)
DEPARTURE PROCEDURES
ORIG-B 18200 (FAA)

TAKEOFF MINIMUMS: **Rwys 18L, 36R**, NA – obstacles.
Rwys 18R, 36L, NA – environmental.

MINEOLA/QUITMAN, TX

WOOD COUNTY (JDD)

TAKEOFF MINIMUMS AND (OBSTACLE)
DEPARTURE PROCEDURES
AMDT 1 15092 (FAA)

TAKEOFF MINIMUMS: **Rwy 18**, 300-2 or std. w/min. climb gradient of 270' per NM to 700.

TAKEOFF OBSTACLE NOTES: **Rwy 18**, tree line, crossing centerline, 2027' from DER, up to 100' AGL/534' MSL. Tree, 4573' from DER, 1195' right of centerline, 585' MSL. Tree, 5454' from DER, 1462' left of centerline, 589' MSL. Tree, 5107' from DER, 1073' left of centerline, 92' AGL/597' MSL. Terrain 12' from DER, 17' left of centerline, 433' MSL. Terrain 22' from DER, 239' right of centerline, 436' MSL. **Rwy 36**, tree line, crossing centerline, 1657' from DER, up to 100' AGL/570' MSL. Terrain 952' from DER, 719' left of centerline, 510' MSL.

MINERAL WELLS, TX

MINERAL WELLS (MWL)

TAKEOFF MINIMUMS AND (OBSTACLE)
DEPARTURE PROCEDURES
AMDT 2 13178 (FAA)

TAKEOFF MINIMUMS: **Rwy 31**, 500-3, or std. w/min. climb of 265' per NM to 1600.

DEPARTURE PROCEDURE: **Rwy 31**, climb heading 305° to 2000 before turning right.

TAKEOFF OBSTACLE NOTES: **Rwy 13**, trees beginning 91' from DER, 200' left of centerline, up to 87' AGL/986' MSL. Tree 362' from DER, 222' right of centerline, 86' AGL/985' MSL. Tree 366' from DER, 252' right of centerline, 87' AGL/986' MSL. Ground 73' from DER, 214' right of centerline, 975' MSL. **Rwy 17**, tree 502' from DER, 279' right of centerline, 100' AGL/1059' MSL. Tree 525' from DER, 618' left of centerline, 100' AGL/1069' MSL. Tree 1687' from DER, 804' left of centerline, 100' AGL/1089' MSL. **Rwy 31**, Trees beginning 187' from DER, 130' left of centerline, up to 51' AGL/964' MSL. Trees beginning 793' from DER, on centerline, up to 49' AGL/948' MSL. Tree 338' from DER, 491' right of centerline, 30' AGL/946' MSL. **Rwy 35**, Tree 575' from DER, 21' right of centerline, 30' AGL/946' MSL. Tree 582' from DER, 614' left of centerline, 31' AGL/940' MSL. Tree 908' from DER, 696' right of centerline, 100' AGL/1019' MSL. Tree 1251' from DER, 93' left of centerline, 100' AGL/1009' MSL. Tree 1407' from DER, 391' right of centerline, 100' AGL/1009' MSL.

06 DEC 2018 to 03 JAN 2019

06 DEC 2018 to 03 JAN 2019

TAKEOFF MINIMUMS, (OBSTACLE) DEPARTURE PROCEDURES, AND DIVERSE VECTOR AREA (RADAR VECTORS)

18312

SC-2

TAKEOFF MINIMUMS, (OBSTACLE) DEPARTURE PROCEDURES, AND DIVERSE VECTOR AREA (RADAR VECTORS)

18312

MOUNT PLEASANT, TX

MOUNT PLEASANT RGNL (OSA)
TAKEOFF MINIMUMS AND (OBSTACLE)
DEPARTURE PROCEDURES
ORIG 09015 (FAA)

TAKEOFF MINIMUMS: **Rwy 35**, 300-1¼ or std. w/ min. climb of 309' per NM to 700, or alternatively, with standard TAKEOFF minimums and a normal 200' per NM climb gradient, TAKEOFF must occur no later than 1,600' prior to DER.

TAKEOFF OBSTACLE NOTES: **Rwy 17**, trees 1231' from DER, 679' right of centerline, 100' AGL/399' MSL. **Rwy 35**, tower 1.04 NM from DER, 1261' right of centerline, 180' AGL/539' MSL. Trees 695' from DER, 614' left of centerline, 100' AGL/469' MSL.

MOUNT VERNON, TX

FRANKLIN COUNTY (F53)
TAKEOFF MINIMUMS AND (OBSTACLE)
DEPARTURE PROCEDURES
AMDT 1 11013 (FAA)

TAKEOFF MINIMUMS: **Rwy 13**, 400-2½ or std. w/ min. climb of 238' per NM to 900.

TAKEOFF OBSTACLE NOTES: **Rwy 13**, trees beginning 1598' from DER, 84' left of centerline, up to 100' AGL/529' MSL. Tower and trees beginning 2889' from DER, 1022' right of centerline, up to 280' AGL/780' MSL. **Rwy 31**, trees beginning 446' from DER, 175' left of centerline, up to 100' AGL/479' MSL. Tower and trees beginning 3439' from DER, 452' right of centerline, up to 113' AGL/500' MSL.

OLNEY, TX

OLNEY MUNI (ONY)
TAKEOFF MINIMUMS AND (OBSTACLE)
DEPARTURE PROCEDURES
ORIG 13010 (FAA)

TAKEOFF OBSTACLE NOTES: **Rwy 4**, trees beginning 923' from DER, 721' right of centerline, up to 34' AGL/1303' MSL. **Rwy 13**, vehicles on road beginning 700' from DER, left and right of centerline, up to 15' AGL/1264' MSL. Trees beginning 745' from DER, 428' left of centerline, up to 55' AGL/1304' MSL. **Rwy 22**, vehicles on road beginning 272' from DER, 556' right of centerline, up to 15' AGL/1284' MSL. Trees beginning 930' from DER, left and right of centerline, up to 55' AGL/1324' MSL. **Rwy 31**, vehicles on road beginning 845' from DER, left and right of centerline, up to 15' AGL/1294' MSL. **Rwy 35**, trees beginning 502' from DER, 428' right of centerline, up to 22' AGL/1293' MSL. Trees beginning 517' from DER, 22' left of centerline, 30' AGL/1299' MSL.

PADUCAH, TX

DAN E. RICHARDS MUNI (3F6)
TAKEOFF MINIMUMS AND (OBSTACLE)
DEPARTURE PROCEDURES
ORIG 11349 (FAA)

TAKEOFF MINIMUMS: **Rwy 35**, 300-2 or std. w/min. climb of 238' per NM to 2400.

DEPARTURE PROCEDURE: **Rwy 35**, climb heading 350° to 2400 before turning left.

TAKEOFF OBSTACLE NOTES: **Rwy 17**, fence line beginning abeam DER, 100' right of centerline, 4' AGL/1853' MSL. Vehicles on road beginning 90' from DER, 379' left of centerline, up to 15' AGL/1864' MSL. Power poles beginning 184' from DER, 295' left of centerline, up to 50' AGL/1899' MSL. Tree 717' from DER, 46' right of centerline, 21' AGL/1870' MSL. Trees beginning 1072' from DER, 779' left of centerline, up to 100' AGL/1949' MSL.

Rwy 35, berm abeam DER, 90' left of centerline, 1864' MSL. Fence line beginning abeam DER, 105' left of centerline, 5' AGL/1864' MSL. Power poles beginning 114' from DER, left and right of centerline, up to 50' AGL/1909' MSL. Vehicles on road beginning 773' from DER, 690' left of centerline, up to 17' AGL/1886' MSL. Trees beginning 4572' from DER, 346' left of centerline, up to 100' AGL/1989' MSL.

PAMPA, TX

PERRY LEFORS FIELD (PPA)
TAKEOFF MINIMUMS AND (OBSTACLE)
DEPARTURE PROCEDURES
ORIG 13010 (FAA)

TAKEOFF OBSTACLE NOTES: **Rwy 35**, pole 771' from DER, 409' left of centerline, 33' AGL/3272' MSL.

PANHANDLE, TX

PANHANDLE-CARSON COUNTY (T45)
TAKEOFF MINIMUMS AND (OBSTACLE)
DEPARTURE PROCEDURES
ORIG 11181 (FAA)

TAKEOFF OBSTACLE NOTES: **Rwy 35**, vehicle on road 95' from DER, 270' right of centerline, up to 15' AGL/3464' MSL. Vehicle on road 218' from DER, up to 10' AGL/3466' MSL. **Rwy 17**, vehicle on road 77' from DER, 228' right of centerline, up to 15' AGL/3469' MSL. Vehicle on road 279' from DER, 277' left of centerline, up to 15' AGL/3464' MSL. Electric pole 512' from DER 253' left of centerline, up to 55' AGL/ 3509' MSL. House 650' from DER, 133' left of centerline, up to 20' AGL/3469' MSL.

PARIS, TX

COX FIELD (PRX)
TAKEOFF MINIMUMS AND (OBSTACLE)
DEPARTURE PROCEDURES
ORIG 06327 (FAA)

TAKEOFF OBSTACLE NOTES: **Rwy 17**, multiple trees beginning 88' from DER, 299' right of centerline, up to 50' AGL/558' MSL. **Rwy 35**, bushes and pole beginning 406' from DER, 402' left of centerline up to 35' AGL/573' MSL. Multiple trees beginning 161' from DER, 81' right of centerline, up to 50' AGL/578' MSL. **Rwy 32**, multiple trees beginning 716' from DER, 488' right of centerline, up to 50' AGL/568' MSL.

TAKEOFF MINIMUMS, (OBSTACLE) DEPARTURE PROCEDURES, AND DIVERSE VECTOR AREA (RADAR VECTORS)

18312

**TAKEOFF MINIMUMS, (OBSTACLE) DEPARTURE PROCEDURES, AND
DIVERSE VECTOR AREA (RADAR VECTORS)**

18312

PERRYTON, TX

PERRYTON OCHILTREE COUNTY (PYX)

TAKEOFF MINIMUMS AND (OBSTACLE)
DEPARTURE PROCEDURES

AMDT 1 17005 (FAA)

TAKEOFF MINIMUMS: **Rwys 4, 22**, NA-Environmental.
DEPARTURE PROCEDURE: **Rwy 17**, climb heading
173° to 3500 before turning right.TAKEOFF OBSTACLE NOTES: **Rwy 17**, vehicles on
road 525' from DER, crossing extended runway
centerline, 2929' MSL. Poles and power line beginning
554' from DER, 391' left of centerline, 26' AGL/2941'
MSL. Poles and power line beginning 559' from DER,
389' right of centerline, 24' AGL/2940' MSL. **Rwy 35**,
pole 14' from DER, 185' left of centerline, 13'
AGL/2928' MSL. Poles and power line beginning 715'
from DER, 359' left of centerline, up to 33' AGL/2946'
MSL.**PLAINS, TX**

YOAKUM COUNTY (F98)

TAKEOFF MINIMUMS AND (OBSTACLE)
DEPARTURE PROCEDURES

ORIG 08269 (FAA)

TAKEOFF OBSTACLE NOTES: **Rwy 3**, tree 948' from
DER, 725' left of centerline, 50' AGL/3769' MSL. **Rwy 17**,
vehicle on road 99' from DER, 476' right of
centerline, 15' AGL/3699' MSL. **Rwy 35**, vehicle on road
546' from DER, 527' left of centerline, 15' AGL/3714'
MSL.**PLAINVIEW, TX**

HALE COUNTY (PVW)

TAKEOFF MINIMUMS AND (OBSTACLE)
DEPARTURE PROCEDURES

ORIG 12096 (FAA)

TAKEOFF MINIMUMS: **Rwy 4**, 300-1½ or std. w/min.
climb of 420' per NM to 3700.TAKEOFF OBSTACLE NOTES: **Rwy 4**, fuel pump 137'
from DER, 368' right of centerline, 5' AGL/3371' MSL.
Building 261' from DER, 444' right of centerline, 33'
AGL/3394' MSL. Pole 264' from DER, 394' right of
centerline, 27' AGL/3388' MSL. Trees beginning 2817'
from DER, 1064' right of centerline, up to 100'
AGL/3454' MSL. Tower 4696' from DER, 1750' left of
centerline, 209' AGL/3558' MSL. Multiple elevators
beginning 6190' from DER, 339' left of centerline, up to
200' AGL/3555' MSL. **Rwy 13**, trees beginning 1218'
from DER, 530' right of centerline, up to 100'
AGL/3469' MSL. Trees beginning 2137' from DER,
479' left of centerline, up to 100' AGL/3469' MSL. **Rwy 22**,
multiple trees, poles and antennas beginning 1121'
from DER, 311' left of centerline, up to 100' AGL/3474'
MSL. **Rwy 31**, pole 1186' from DER, 204' right of
centerline, 35' AGL/3405' MSL. Trees beginning 4035'
from DER, 841' left of centerline, up to 100' AGL/3479'
MSL. Trees beginning 4144' from DER, 1318' right of
centerline, up to 100' AGL/3479' MSL.**ROCKWALL, TX**

RALPH M HALL/ROCKWALL MUNI (F46)

TAKEOFF MINIMUMS AND (OBSTACLE)
DEPARTURE PROCEDURES

AMDT 1 14261 (FAA)

TAKEOFF OBSTACLE NOTES: **Rwy 17**, vehicles on road
beginning 19' from DER, on centerline and left and right
of centerline, up to 15' AGL/584' MSL. Trees beginning
128' from DER, 354' left of centerline, up to 30' AGL/599'
MSL. Trees beginning 135' from DER, 205' right of
centerline, up to 30' AGL/589' MSL. Trees beginning 810'
from DER, on centerline and left and right of centerline,
up to 100' AGL/679' MSL. **Rwy 35**, transmission line and
transmission towers beginning 362' from DER, on
centerline and left and right of centerline, up to 91'
AGL/607' MSL.**SEMINOLE, TX**

GAINES COUNTY (GNC)

TAKEOFF MINIMUMS AND (OBSTACLE)
DEPARTURE PROCEDURES

ORIG 10210 (FAA)

TAKEOFF MINIMUMS: **Rwy 35**, std. w/ min. climb of 612'
per NM to 3600 or 300-1 w/ min. climb of 235' per NM to
3900, or 900-3 for climb in visual conditions.DEPARTURE PROCEDURE: **Rwy 35**, climb heading
350° to 4000 before turning right. For climb in visual
conditions cross Gaines County airport at or above 4100
before proceeding on course.TAKEOFF OBSTACLE NOTES: **Rwy 17**, brush beginning
147' from DER 388' right of centerline, 30' AGL/3280'
MSL. Tree 231' from DER, 356' right of centerline, 60'
AGL/3293' MSL. House 865' from DER, 531' left of
centerline, 25' AGL/3289' MSL. Pole 1238' from DER,
650' right of centerline, 30' AGL/3297' MSL. **Rwy 35**,
tower 2898' from DER, 1016' left of centerline, 169'
AGL/3440' MSL.**SEYMOUR, TX**

SEYMOUR MUNI (60F)

TAKEOFF MINIMUMS AND (OBSTACLE)
DEPARTURE PROCEDURES

ORIG 12040 (FAA)

TAKEOFF OBSTACLE NOTES: **Rwy 17**, vehicles on
roadway beginning 27' from DER, left and right of
centerline, up to 17' AGL/1356' MSL. Aircraft on taxiway
36' from DER, 175' left of centerline, up to 25' AGL/1364'
MSL. Buildings beginning 73' from DER, 251' left of
centerline, up to 40' AGL/1379' MSL. Trees beginning
710' from DER, 225' left of centerline, up to 100'
AGL/1459' MSL. **Rwy 35**, vehicles on roadway beginning
35' from DER, 202' left of centerline, up to 17' AGL/1356'
MSL. Trees beginning 421' from DER, 7' right of
centerline, up to 100' AGL/1439' MSL.

06 DEC 2018 to 03 JAN 2019

06 DEC 2018 to 03 JAN 2019

**TAKEOFF MINIMUMS, (OBSTACLE) DEPARTURE PROCEDURES, AND
DIVERSE VECTOR AREA (RADAR VECTORS)**

18312

SC-2

**TAKEOFF MINIMUMS, (OBSTACLE) DEPARTURE PROCEDURES, AND
DIVERSE VECTOR AREA (RADAR VECTORS)**

18312

**SHEPPARD AFB/WICHITA FALLS MUNI
(KSPS),**

WICHITA FALLS, TX

TAKEOFF MINIMUMS AND (OBSTACLE)
DEPARTURE PROCEDURES

AMDT 1 13290

DEPARTURE PROCEDURE: **Rwy 15R/15C/15L**,
Climb on heading 153° to 2500' before turning
Westbound. **Rwy 17**, Climb heading 160° to 2500',
intercept SPS VORTAC R-120 outbound. Cross SPS
R-120/8 DME (HUNECP) at or below 2500', then climb
and maintain 5000' or higher as assigned. Turn on
course after reaching 3100'. **Rwy 35**, Climb heading
355° to 1500' then proceed on course.

TAKEOFF OBSTACLE NOTES: **Rwy 17**, Light pole
31' AGL/1040' MSL, 837' from DER, 726' left of
centerline. **Rwy 35**, Large frame aircraft parking,
56' AGL/1053' MSL, 337' from DER, 542' left of
centerline. Large frame aircraft parking,
56' AGL/1053' MSL, 451' from DER, 573' left of
centerline.

SHERMAN, TX

SHERMAN MUNI (SWI)

TAKEOFF MINIMUMS AND (OBSTACLE)
DEPARTURE PROCEDURES

AMDT 1 13234 (FAA)

TAKEOFF MINIMUMS: **Rwy 34**, 300-1½ or std. w/min.
climb of 267' per NM to 1100.

DEPARTURE PROCEDURE: **Rwy 34**, climb heading
343° to 1500 before turning right.

TAKEOFF OBSTACLE NOTES: **Rwy 16**, trees
beginning 8' from DER, 237' right of centerline up to
55' AGL/755' MSL. Sign 19' from DER, 133' left of
centerline, 1' AGL/713' MSL. Trees beginning 25' from
DER, 314' left of centerline, up to 69' AGL/775' MSL.
Pole 332' from DER, 522' right of centerline, 30'
AGL/740' MSL. Poles beginning 406' from DER, 574'
left of centerline up to 37' AGL/747' MSL.
Transmission tower lighted 695' from DER, 242' left of
centerline, 23' AGL/733' MSL. **Rwy 34**, fence
beginning 50' from DER, 38' right of centerline, up to
13' AGL/753' MSL. Trees beginning 80' from DER, 3'
left of centerline, up to 72' AGL/822' MSL. Oil rig 140'
from DER, 300' right of centerline, 31' AGL/771' MSL.
Trees beginning 252' from DER, 15' right of centerline,
up to 79' AGL/839' MSL. Poles beginning 419' from
DER, 250' right of centerline, up to 44' AGL/802' MSL.
Light support structure 1074' from DER, 271' right of
centerline, 40' AGL/784' MSL. Building 1499' from
DER, 847' right of centerline, 35' AGL/795' MSL.
Tower 1.2 NM from DER, 1026' left of centerline, 164'
AGL/938' MSL.

SHERMAN/DENISON, TX

NORTH TEXAS RGNL/PERRIN FIELD (GYI)

TAKEOFF MINIMUMS AND (OBSTACLE)
DEPARTURE PROCEDURES

ORIG 11125 (FAA)

DEPARTURE PROCEDURE: **Rwy 17L**, Climb heading
176° to 1800 before turning right.

TAKEOFF OBSTACLE NOTES: **Rwy 13**, rising terrain
beginning 48' from DER, 202' left of centerline, 745' MSL.
Plane on taxiway 521' from DER, 48' left of centerline, up
to 55' AGL/804' MSL. Trees beginning 3299' from DER,
519' right of centerline, up to 100' AGL/859' MSL. **Rwy
17L**, vehicle on road 123' from DER, 466' right of
centerline, up to 15' AGL/784' MSL. Pole 1088' from
DER, 740' left of centerline, 10' AGL/779' MSL. Rig 3711'
from DER, 821' left of centerline, 96' AGL/861' MSL. **Rwy
31**, plane on taxiway 605' from DER, 620' right of
centerline, up to 25' AGL/854' MSL. Trees beginning
1791' from DER, 445' left of centerline, up to 100'
AGL/819' MSL. **Rwy 35R**, plane on taxiway 242' from
DER, 440' right of centerline, up to 25' AGL/764' MSL.

SLATON, TX

SLATON MUNI (F49)

TAKEOFF MINIMUMS AND (OBSTACLE)
DEPARTURE PROCEDURES

ORIG 17005 (FAA)

TAKEOFF MINIMUMS: **Rwy 18**, 400-2 or std. w/min. climb
of 263' per NM to 3600.

TAKEOFF OBSTACLE NOTES: **Rwy 18**, equip 85' from
DER, 369' left of centerline, 3115' MSL. Trees beginning
278' from DER, 269' right of centerline, up to 39'
AGL/3145' MSL. Tower 1.7 NM from DER, 698' right of
centerline, 348' AGL/3457' MSL. **Rwy 36**, tree 124' from
DER, 518' left of centerline, 9' AGL/3127' MSL. Tree 711'
from DER, 592' left of centerline, 3142' MSL. Poles
beginning 712' from DER, 261' left of centerline, up to
3146' MSL. Tree 831' from DER, 642' left of centerline,
46' AGL/3156' MSL. Trees beginning 858' from DER,
642' left of centerline, up to 48' AGL/3158' MSL.

SNYDER, TX

WINSTON FIELD (SNK)

TAKEOFF MINIMUMS AND (OBSTACLE)
DEPARTURE PROCEDURES

ORIG 03191 (FAA)

DEPARTURE PROCEDURE: **Rwy 26**, climb via heading
263° to 3000 prior to turning northbound.

SPEARMAN, TX

MAJOR SAMUEL B CORNELIUS FIELD
(E42)

TAKEOFF MINIMUMS AND (OBSTACLE)
DEPARTURE PROCEDURES

ORIG 09015 (FAA)

TAKEOFF MINIMUMS: **Rwy 20**, 300-1¼ or std. w/ min.
climb of 286' per NM to 3500.

TAKEOFF OBSTACLE NOTES: **Rwy 20**, Vehicle on road
174' from DER, 496' right of centerline, 15' AGL/3094'
MSL. Tower 4330' from DER, 575' left of centerline, 100'
AGL/3228' MSL. Tower 1.26 NM from DER, 2533' left of
centerline, 250' AGL/3355' MSL.

**TAKEOFF MINIMUMS, (OBSTACLE) DEPARTURE PROCEDURES, AND
DIVERSE VECTOR AREA (RADAR VECTORS)**

18312



TAKEOFF MINIMUMS, (OBSTACLE) DEPARTURE PROCEDURES, AND DIVERSE VECTOR AREA (RADAR VECTORS)



18312

STAMFORD, TX

ARLEDGE FIELD (F56)

TAKEOFF MINIMUMS AND (OBSTACLE)
DEPARTURE PROCEDURES

ORIG 10042 (FAA)

TAKEOFF MINIMUMS: **Rwys 8, 13, 26, 31**, NA-
Environmental.TAKEOFF OBSTACLE NOTES: **Rwy 17**, trees
beginning 772' from DER, 532' left of centerline, up to
100' AGL/1659' MSL. Tree 2215' from DER, 966' right
of centerline, up to 100' AGL/1659' MSL. **Rwy 35**, tree
3284' from DER, 901' left of centerline, up to 100'
AGL/1669' MSL. Trees beginning 1267' from DER,
712' right of centerline, up to 100' AGL/1664' MSL.

STEPHENVILLE, TX

STEPHENVILLE CLARK RGNL (SEP)

TAKEOFF MINIMUMS AND (OBSTACLE)
DEPARTURE PROCEDURES

ORIG 05300 (FAA)

TAKEOFF OBSTACLE NOTES: **Rwy 32**, trees
beginning 1687' from DER, 124' right of centerline, 80'
AGL/1389' MSL.

STRATFORD, TX

STRATFORD FIELD (H70)

TAKEOFF MINIMUMS AND (OBSTACLE)
DEPARTURE PROCEDURES

AMDT 4A 18172 (FAA)

TAKEOFF MINIMUMS: **Rwy 22**, 400-2 or std. w/min.
climb of 350' per NM to 4200.

SULPHUR SPRINGS, TX

SULPHUR SPRINGS MUNI (SLR)

TAKEOFF MINIMUMS AND (OBSTACLE)
DEPARTURE PROCEDURES

AMDT 1 11237 (FAA)

TAKEOFF OBSTACLE NOTES: **Rwy 1**, tree 1' from
DER, 140' left of centerline, 27' AGL/484' MSL. Tree
108' from DER, 265' right of centerline, 13' AGL/470'
MSL. **Rwy 19**, trees beginning 82' from DER, 265' right
of centerline, up to 100' AGL/609' MSL. Trees
beginning 119' from DER, 454' left of centerline, up to
53' AGL/552' MSL. Vehicle on road 492' from DER, 2'
left of centerline, 17' AGL/518' MSL. Poles beginning
1155' from DER, 143' left of centerline, up to 40'
AGL/536' MSL. Poles beginning 1521' from DER, 158'
right of centerline, up to 53' AGL/552' MSL. Tank 1835'
from DER, 14' right of centerline, 55' AGL/553' MSL.
Chimney 1862' from DER, 172' right of centerline, 48'
AGL/544' MSL. Chimneys beginning 1887' from DER,
106' left of centerline, up to 44' AGL/543' MSL.

SWEETWATER, TX

AVENGER FIELD (SWW)

TAKEOFF MINIMUMS AND (OBSTACLE)
DEPARTURE PROCEDURES

ORIG 11293 (FAA)

TAKEOFF OBSTACLE NOTES: **Rwy 4**, multiple trees,
poles and vehicles on road beginning 19' from DER, 7'
left of centerline, up to 79' AGL/2370' MSL. Multiple
trees, poles and vehicles on road beginning 39' from
DER, 5' right of centerline, up to 60' AGL/2353' MSL.
Rwy 17, sign 12' from DER, 250' right of centerline, 2'
AGL/2375' MSL. Light 49' from DER, 90' right of
centerline, 3' AGL/2372' MSL. Multiple vehicles on road
beginning 750' from DER, 8' right of centerline, up to 15'
AGL/2390' MSL. Multiple poles and vehicles on road
beginning 755' from DER, 1' left of centerline, up to 54'
AGL/2407' MSL. Telephone line 943' from DER, 278' left
of centerline, 48' AGL/2401' MSL. **Rwy 22**, terrain 49'
from DER, 219' right of centerline, 2383' MSL. Multiple
trees, poles, and buildings beginning 298' from DER,
261' right of centerline, up to 61' AGL/2420' MSL. **Rwy
35**, multiple trees beginning 14' from DER, 361' left of
centerline, up to 27' AGL/2367' MSL. Light 49' from DER,
90' left of centerline, 2' AGL/2342' MSL. Light 50' from
DER, 90' right of centerline, 2' AGL/2342' MSL. Multiple
trees beginning 70' from DER, 187' right of centerline, up
to 60' AGL/2355' MSL.

TERRELL, TX

TERRELL MUNI (TRL)

TAKEOFF MINIMUMS AND (OBSTACLE)
DEPARTURE PROCEDURES

AMDT 1 16147 (FAA)

TAKEOFF OBSTACLE NOTES: **Rwy 17**, tree 1087' from
DER, 511' right of centerline, 486' MSL. Tree 1220' from
DER, 399' right of centerline, 488' MSL. Tree 1552' from
DER, 200' right of centerline, 498' MSL. **Rwy 35**, fence
206' from DER, 349' right of centerline, 8' AGL/481' MSL.
Pole 215' from DER, 401' right of centerline, 16'
AGL/488' MSL. Pole 250' from DER, 408' right of
centerline, 25' AGL/496' MSL. Pole 295' from DER, 524'
right of centerline, 504' MSL. Poles beginning 295' from
DER, 298' right of centerline, up to 34' AGL/504' MSL.
Trees beginning 636' from DER, 319' right of centerline,
up to 519' MSL. Trees, poles and lite beginning 770' from
DER, 110' left of centerline, up to 510' MSL. Trees and
poles beginning 1186' from DER, 336' left of centerline,
up to 522' MSL.

06 DEC 2018 to 03 JAN 2019

06 DEC 2018 to 03 JAN 2019



TAKEOFF MINIMUMS, (OBSTACLE) DEPARTURE PROCEDURES, AND DIVERSE VECTOR AREA (RADAR VECTORS)



18312

SC-2

TAKEOFF MINIMUMS, (OBSTACLE) DEPARTURE PROCEDURES, AND DIVERSE VECTOR AREA (RADAR VECTORS)

18312

TYLER, TX

TYLER POUNDS RGNL (TYR)
TAKEOFF MINIMUMS AND (OBSTACLE)
DEPARTURE PROCEDURES
AMDT 3 18144 (FAA)

TAKEOFF OBSTACLE NOTES: **Rwy 4**, tree 485' from DER, 602' left of centerline, 549' MSL. Trees beginning 630' from DER, 305' right of centerline, up to 578' MSL. Tree 868' from DER, 568' left of centerline, 560' MSL. **Rwy 13**, vegetation 12' from DER, 290' right of centerline, 547' MSL. Tree 172' from DER, 413' right of centerline, 557' MSL. Tree 519' from DER, 598' right of centerline, 581' MSL. Trees beginning 642' from DER, 514' left of centerline, up to 608' MSL. **Rwy 17**, tree 150' from DER, 321' right of centerline, 565' MSL. Trees beginning 384' from DER, 139' right of centerline, up to 588' MSL. Tree, pole beginning 970' from DER, 337' left of centerline, up to 586' MSL. **Rwy 22**, traverse way, fence beginning 55' from DER, 429' right of centerline, up to 556' MSL. Pole beginning 497' from DER, 521' right of centerline, up to 30' AGL/572' MSL. Pole 1146' from DER, 805' right of centerline, 35' AGL/576' MSL. Tree 1208' from DER, 795' right of centerline, 578' MSL. Tree 1360' from DER, 700' left of centerline, 591' MSL. Tree 1665' from DER, 803' left of centerline, 593' MSL. Building 1812' from DER, 810' right of centerline, 60' AGL/598' MSL. **Rwy 31**, tree 504' from DER, 533' right of centerline, 542' MSL. Tree 542' from DER, 573' right of centerline, 555' MSL. Tree 582' from DER, 574' right of centerline, 559' MSL. Tree 908' from DER, 689' left of centerline, 548' MSL. Tree 1341' from DER, 856' right of centerline, 567' MSL. Trees beginning 1384' from DER, 666' left of centerline, up to 556' MSL. Trees beginning 1504' from DER, 754' right of centerline, up to 568' MSL. **Rwy 35**, building 742' from DER, 561' right of centerline, 25' AGL/540' MSL. Tree 1086' from DER, 26' right of centerline, 555' MSL. Tree 1114' from DER, 1' left of centerline, 559' MSL. Trees beginning 1161' from DER, 350' right of centerline, up to 567' MSL. Tree 1850' from DER, 338' left of centerline, 567' MSL. Tree 1963' from DER, 456' left of centerline, 568' MSL.

WEATHERFORD, TX

PARKER COUNTY (WEA)
TAKEOFF MINIMUMS AND (OBSTACLE)
DEPARTURE PROCEDURES
ORIG 11321 (FAA)
DEPARTURE PROCEDURE: **Rwy 35**, climb heading 355° to 1600 before turning left.
TAKEOFF OBSTACLE NOTES: **Rwy 17**, trees beginning 430' from DER, left and right of centerline, up to 35' AGL/1016' MSL. Houses beginning 952' from DER, 76' left of centerline, up to 30' AGL/1012' MSL. Utility poles beginning 1958' from DER, 185' right of centerline, up to 55' AGL/1037' MSL. **Rwy 35**, trees beginning 25' from DER, 176' left of centerline, up to 35' AGL/1014' MSL. Vehicle on road 105' from DER, across centerline, 17' AGL/1007' MSL. Sign and pole 193' from DER, 295' right of centerline, 30' AGL/1008' MSL.

WHEELER, TX

WHEELER MUNI (T59)
TAKEOFF MINIMUMS AND (OBSTACLE)
DEPARTURE PROCEDURES
ORIG 10210 (FAA)
TAKEOFF OBSTACLE NOTES: **Rwy 17**, hanger 360' from DER, 399' left of centerline, 15' AGL/2504' MSL. Utility pole 593' from DER, 513' right of centerline, 30' AGL/2509' MSL. Utility pole 623' from DER, 507' left of centerline, 30' AGL/2499' MSL. Tree 2656' from DER, 887' right of centerline, 50' AGL/2569' MSL. **Rwy 35**, tree 2267' from DER, 776' right of centerline, 50' AGL/2497' MSL.

VERNON, TX

WILBARGER COUNTY (F05)
TAKEOFF MINIMUMS AND (OBSTACLE)
DEPARTURE PROCEDURES
ORIG 10210 (FAA)

TAKEOFF OBSTACLE NOTES: **Rwy 2**, vehicle on road 401' from DER, 587' right of centerline, up to 15' AGL/1269' MSL. Pole 329' from DER, 525' right of centerline, up to 30' AGL/1284' MSL. Ground 56' from DER, 399' left of centerline, 1258' MSL. **Rwy 20**, vehicle on road 451' from DER, 604' right of centerline, up to 15' AGL/1279' MSL. **Rwy 34**, trees beginning 1178' from DER, 530' right of centerline, up to 60' AGL/1309' MSL. Vehicle on road 472' from DER, 445' left of centerline, up to 15' AGL/1274' MSL.

TAKEOFF MINIMUMS, (OBSTACLE) DEPARTURE PROCEDURES, AND DIVERSE VECTOR AREA (RADAR VECTORS)

18312



TAKEOFF MINIMUMS, (OBSTACLE) DEPARTURE PROCEDURES, AND DIVERSE VECTOR AREA (RADAR VECTORS)



18312

WICHITA FALLS, TX

KICKAPOO DOWNTOWN (CWC)

TAKEOFF MINIMUMS AND (OBSTACLE)
DEPARTURE PROCEDURES

AMDT 2 10294 (FAA)

DEPARTURE PROCEDURE: **Rwy 17**, climb heading 172° to 1700 before proceeding on course. **Rwy 35**, climb heading 352° to 2100 before proceeding on course.

TAKEOFF OBSTACLE NOTES: **Rwy 17**, numerous light poles, signs, and trees beginning 309' from DER, 473' right of centerline, up to 60' AGL/1056' MSL. Pole 2290' from DER, 397' left of centerline, 58' AGL/1062' MSL. Numerous vehicles on roads beginning 334' from DER, on centerline, up to 17' AGL/1019' MSL. **Rwy 35**, building 123' from DER, 495' right of centerline, 80' AGL/1060' MSL. Vehicles on road, 354' from DER, on centerline, up to 15' AGL/994' MSL. Pole 177' from DER, 313' left of centerline, 33' AGL/1008' MSL.

WICHITA VALLEY (F14)

TAKEOFF MINIMUMS AND (OBSTACLE)
DEPARTURE PROCEDURES

AMDT 1 10266 (FAA)

TAKEOFF MINIMUMS: **Rwys 4, 16, 22, 34**, NA-Environmental. **Rwy 13**, Std. w/ min. climb of 334' per NM to 2400.

TAKEOFF OBSTACLE NOTES: **Rwy 13**, vehicle on road 269' from DER, 516' right of centerline, 17' AGL/996' MSL. Trees beginning 385' from DER, 104' right of centerline, up to 100' AGL/1079' MSL. Railroad 445' from DER, 546' right of centerline, 23' AGL/1002' MSL. **Rwy 31**, building 43' from DER, 242' right of centerline, 15' AGL/1019' MSL. Building 165' from DER, 511' left of centerline, 15' AGL/1019' MSL. Vehicle on road 273' from DER, 14' left of centerline, 15' AGL/1015' MSL. Tree 5553' from DER, 651' right of centerline, up to 100' AGL/1149' MSL.

WINNSBORO, TX

WINNSBORO MUNI (F51)

TAKEOFF MINIMUMS AND (OBSTACLE)
DEPARTURE PROCEDURES

ORIG 83216 (FAA)

DEPARTURE PROCEDURE: **Rwys 1,19**, climb runway heading to 1000 prior to turn.

06 DEC 2018 to 03 JAN 2019

06 DEC 2018 to 03 JAN 2019

