

NDB or GPS-A

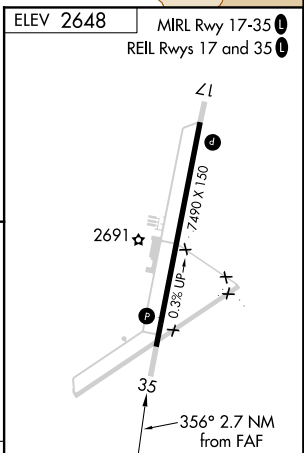
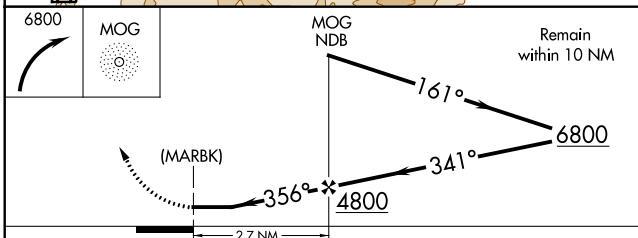
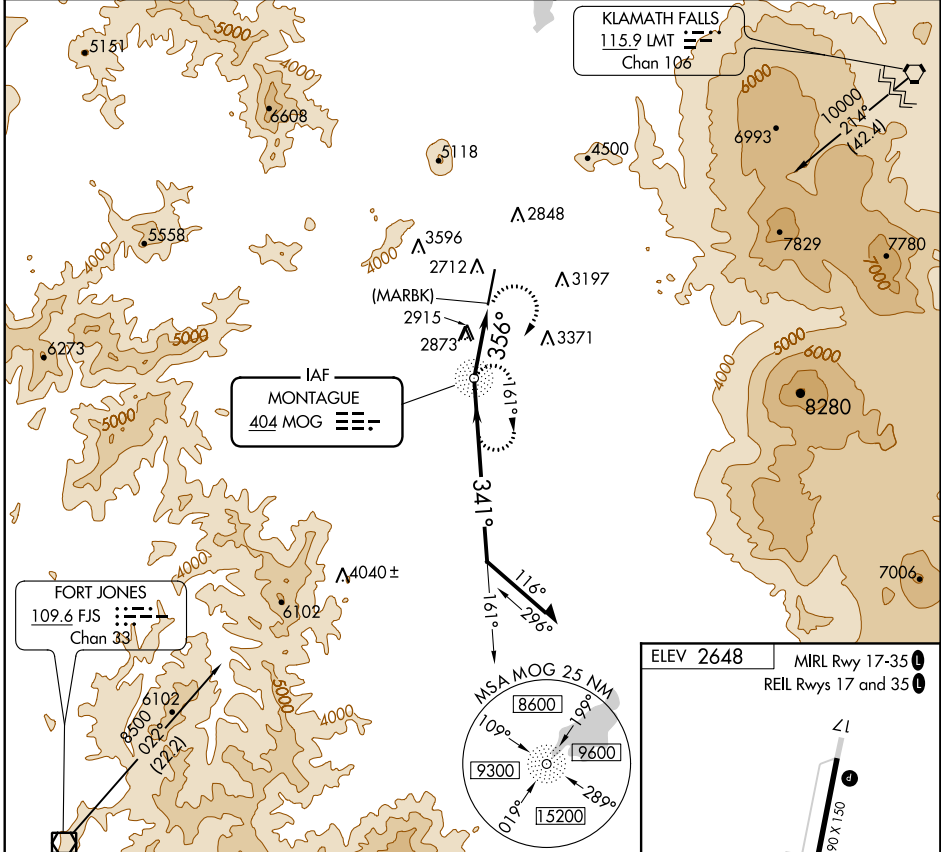
SISKIYOU COUNTY (SIY)

NDB MOG 404	APP CRS 356°	Rwy Idg TDZE Apt Elev	N/A N/A 2648
-----------------------	------------------------	--------------------------	---

NA Use Siskiyou County altimeter setting; when not available, use Montague-Yreka Rohrer Field altimeter setting; when neither received, procedure not authorized.

MISSED APPROACH: Climbing right turn to 6800 direct MOG NDB and hold.

ASOS 121.125	SEATTLE CENTER 124.85 306.3	UNICOM 123.0 (CTAF)
------------------------	---------------------------------------	-------------------------------



CATEGORY	A	B	C	D	FAF to MAP 2.7 NM					
CIRCLING	3760-1¼ 1112 (1200-1¼)	3760-1½ 1112 (1200-1½)	3760-3	1112 (1200-3)	Knots	60	90	120	150	180
					Min:Sec	2:42	1:48	1:21	1:05	0:54

SW-2, 17 JUN 2021 to 15 JUL 2021

SW-2, 17 JUN 2021 to 15 JUL 2021