

WAAS CH <b>62823</b> <b>W21A</b>	APP CRS <b>206°</b>	Rwy Idg TDZE Apt Elev	<b>5502</b> <b>315</b> <b>315</b>
--	------------------------	-----------------------------	---

# RNAV (GPS) RWY 21

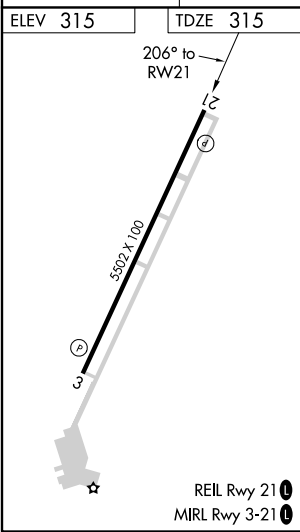
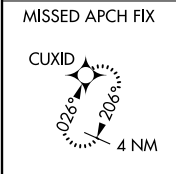
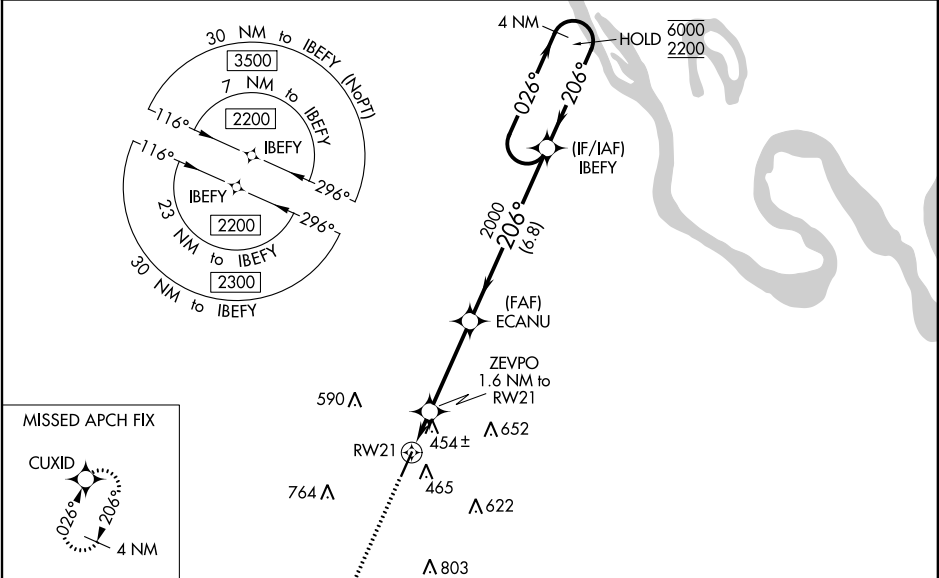
SIKESTON MEML MUNI (SIK)

RNP APCH.

**NA** Rwy 21 helicopter visibility reduction below 3/4 SM NA. Baro-VNAV NA when using Cape Girardeau altimeter setting. For uncompensated Baro-VNAV systems, LNAV/VNAV NA below -15°C or above 54°C. When local altimeter setting not received, use Cape Girardeau altimeter setting and increase all DA 49 feet and all MDA 60 feet. Increase LNAV and Circling Cat C/D visibility 1/4 SM.

MISSED APPROACH: Climb to 2000 direct CUXID and hold.

AWOS-3 <b>119.175</b>	MEMPHIS CENTER <b>133.65 292.15</b>	UNICOM <b>122.8 (CTAF) 0</b>
--------------------------	--	---------------------------------



2000	CUXID	IBEFY	4 NM Holding Pattern	
*LNAV only	ZEVPO 1.6 NM to RWY 21	ECANU 2000	206° → 6000 ← 206° 2200	
RWY 21	860*	2000	GP 3.00° TCH 45	
	1.6	3.6 NM	6.8 NM	
CATEGORY	A	B	C	D
LPV DA	565-1 250 (300-1)			
LNAV/VNAV DA	761-1 3/8 446 (500-1 3/8)			
LNAV MDA	720-1 405 (500-1)		720-1 1/8 405 (500-1 1/8)	
<input checked="" type="checkbox"/> CIRCLING	840-1 525 (600-1)	860-1 545 (600-1)	1080-2 1/4 765 (800-2 1/4)	1160-2 3/4 845 (900-2 3/4)

NC-3, 19 MAY 2022 to 16 JUN 2022

NC-3, 19 MAY 2022 to 16 JUN 2022