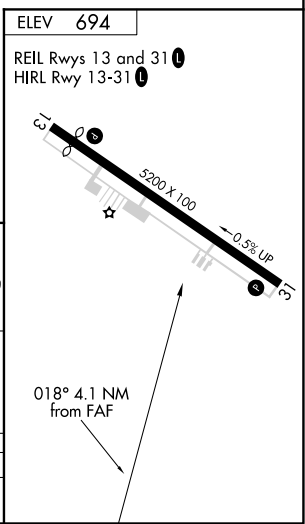
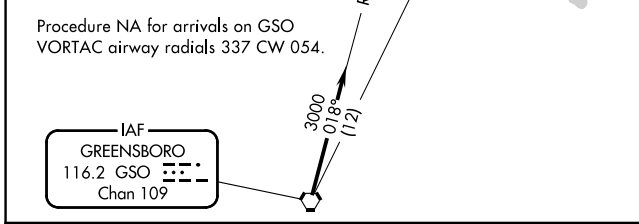
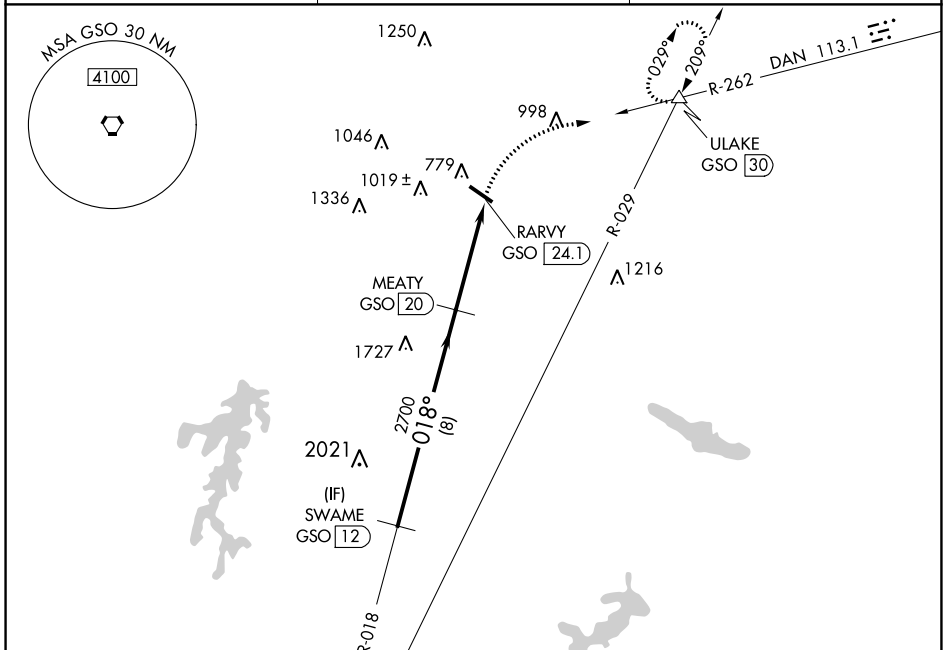


VORTAC GSO 116.2 Chan 109	APP CRS 018°	Rwy Idg TDZE Apt Elev N/A N/A 694
---	------------------------	--

VOR/DME-A
ROCKINGHAM COUNTY NC SHILOH (SIF')

<p>NA Helicopter visibility reduction NA. Procedure NA at night.</p>	<p>MISSED APPROACH: Climbing right turn to 3100 via DAN VOR R-262 to ULAKE/GSO 30 DME and hold.</p>
---	---

<p>AWOS-3 119.775</p>	<p>GREENSBORO APP CON 124.35 269.225</p>	<p>UNICOM 122.8 (CTAF)</p>
----------------------------------	---	---------------------------------------



CATEGORY	A	B	C	D
CIRCLING	1400-1 706 (800-1)	1400-1¼ 706 (800-1¼)	1400-2 706 (800-2)	1420-2¼ 726 (800-2¼)

SE-2, 09 SEP 2021 to 07 OCT 2021

SE-2, 09 SEP 2021 to 07 OCT 2021