

# WIPOR THREE ARRIVAL (RNAV)

PROVIDENCE, RHODE ISLAND

1202 101 51 01 1202 101 51 15 15-EN

## ARRIVAL ROUTE DESCRIPTION

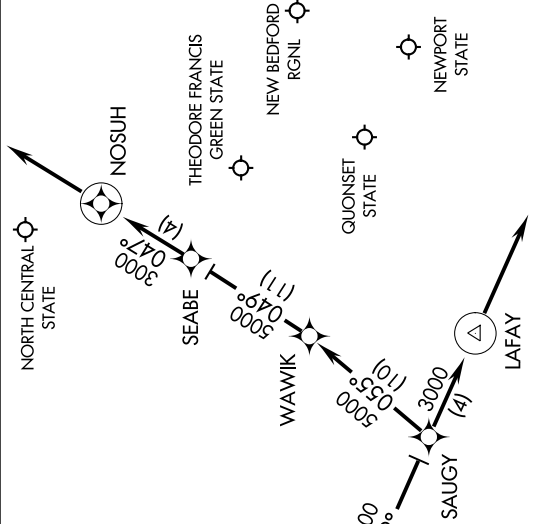
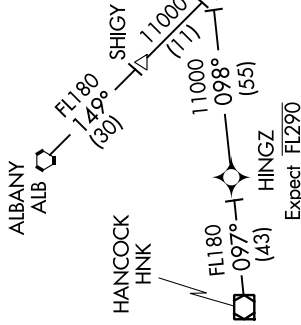
- ALBANY TRANSITION (ALB. WIPOR3):
- HANCOCK TRANSITION (HNK. WIPOR3):
- HINGZ TRANSITION (HINGZ. WIPOR3):

From WIPOR on track 142° to ORW VOR/DME, then on track 129° to SAUGY.  
 Landing KPVD Rwys 5, 34: From SAUGY on track 129° to LAFAY, then on track 129°.  
 Expect radar vectors to final approach course.

Landing KPVD Rwys 16, 23: From SAUGY on track 055° to WAWIK, then on track 049° to SEABE.  
 Then on track 047° to NOSUH, then on track 047°. Expect radar vectors to final approach course.  
 Landing KOGU, KUUU, KEWB, all rwys: From WIPOR on track 142° to ORW VOR/DME, then on track 129° to SAUGY, then on track 129° to LAFAY, then on track 129°. Expect radar vectors to destination airport and final approach course.

Landing KSFZ all rwys: From WIPOR on track 142° to ORW VOR/DME, then on track 129° to SAUGY, then on track 055° to WAWIK, then on track 049° to SEABE, then on track 047° to NOSUH, then on track 047°. Expect radar vectors to final approach course.

PROVIDENCE APP CON★  
 123.675 244.875  
 EWB ATIS  
 126.85  
 PVD D-ATIS  
 124.2



NOTE: RADAR required.  
 NOTE: RNAV 1.  
 NOTE: DME/DME/IRU or GPS required.

NOTE: Chart not to scale.

# WIPOR THREE ARRIVAL (RNAV)

PROVIDENCE, RHODE ISLAND

NE-1, 17 JUN 2021 to 15 JUL 2021