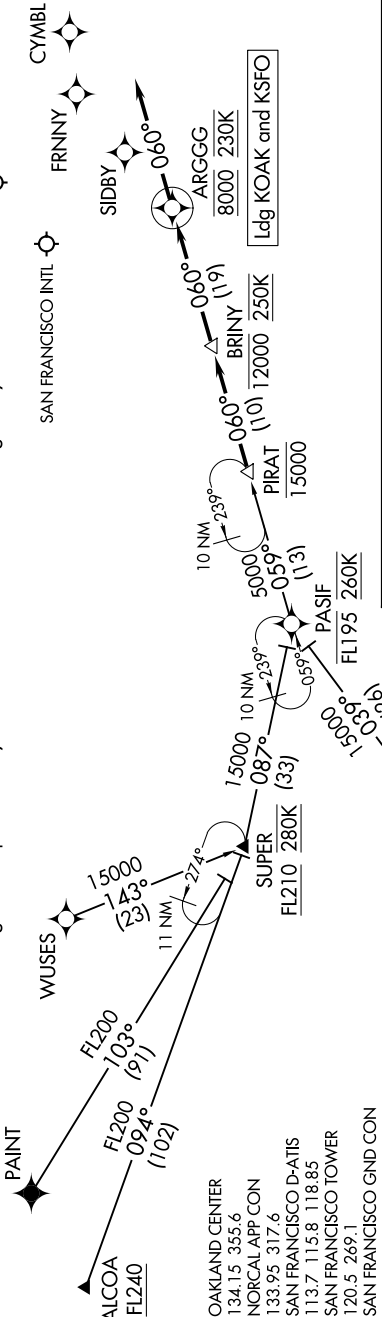


6102 CED 07 NOV 2019 to 05 DEC 202

- NOTE: RADAR required.
- NOTE: RNAV 1.
- NOTE: GPS required.
- NOTE: Turboprop and turboprop aircraft only.
- NOTE: Landing SFO expect Runway 28L/R unless otherwise assigned by ATC.
- NOTE: Landing OAK expect Runway 28L/R or 30 unless otherwise assigned by ATC.



ARRIVAL ROUTE DESCRIPTION

ALCOA TRANSITION (ALCOA.PIRAT2)
CINNY TRANSITION (CINNY.PIRAT2)
HUNTS TRANSITION (HUNTS.PIRAT2)
PAINT TRANSITION (PAINT.PIRAT2)
PASIF TRANSITION (PASIF.PIRAT2)
WUSES TRANSITION (WUSES.PIRAT2)

LANDING KOAK/KSFO: From PIRAT on track 060° to cross BRINY at or below 12000 and at 250K, then on track 060° to cross ARGEGG at 8000 and at 230K, then on track 060°. Expect RADAR vectors to assigned instrument approach.

NOTE: Chart not to scale.

SW-2. 07 NOV 2019 to 05 DEC 2019