

TIPP TOE VISUAL RWY 28L/R

AL-375 (FAA)

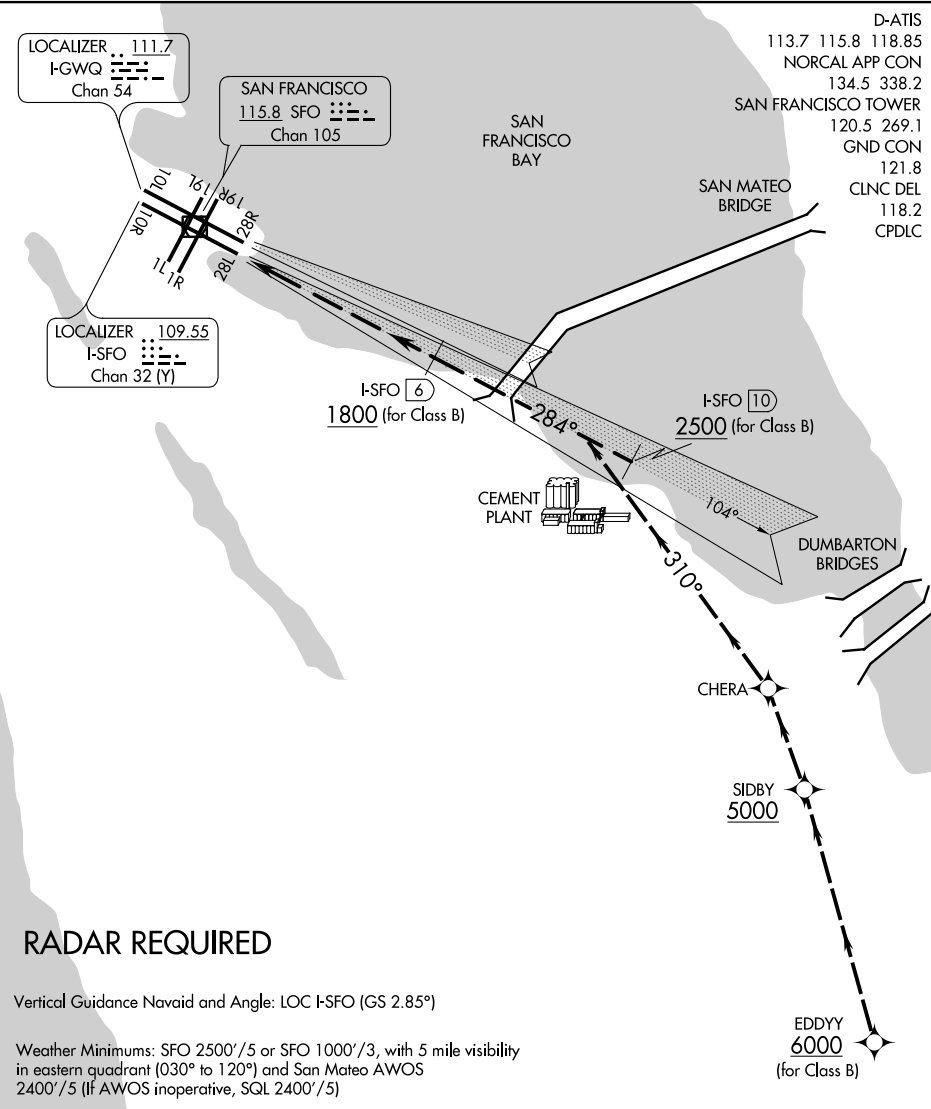
SAN FRANCISCO INTL (SFO)
SAN FRANCISCO, CALIFORNIA

LOCALIZER 111.7
I-GWQ
Chan 54

SAN FRANCISCO 115.8 SFO
Chan 105

LOCALIZER 109.55
I-SFO
Chan 32 (Y)

- D-ATIS 113.7 115.8 118.85
- NORCAL APP CON 134.5 338.2
- SAN FRANCISCO TOWER 120.5 269.1
- GND CON 121.8
- CLNC DEL 118.2
- CPDLC



SW-2, 29 MAR 2018 to 26 APR 2018

SW-2, 29 MAR 2018 to 26 APR 2018

RADAR REQUIRED

Vertical Guidance Navaid and Angle: LOC I-SFO (GS 2.85°)

Weather Minimums: SFO 2500'/5 or SFO 1000'/3, with 5 mile visibility in eastern quadrant (030° to 120°) and San Mateo AWOS 2400'/5 (If AWOS inoperative, SQL 2400'/5)

1	2	3	4	5	6	7	8	9	10	11	12	13	14	15	16
---	---	---	---	---	---	---	---	---	----	----	----	----	----	----	----

TIPP TOE VISUAL APPROACH RUNWAY 28L/R

NOTE: Closely spaced parallel visual approaches may be in progress. In the event of a go-around on Runway 28L, turn left heading 265° or on Runway 28R, heading 280°, climb and maintain 3000 or as directed by ATC.

TIPP TOE VISUAL RWY 28L/R

Amdt 2 29MAR18

37°37'N-122°23'W

SAN FRANCISCO, CALIFORNIA
SAN FRANCISCO INTL (SFO)