

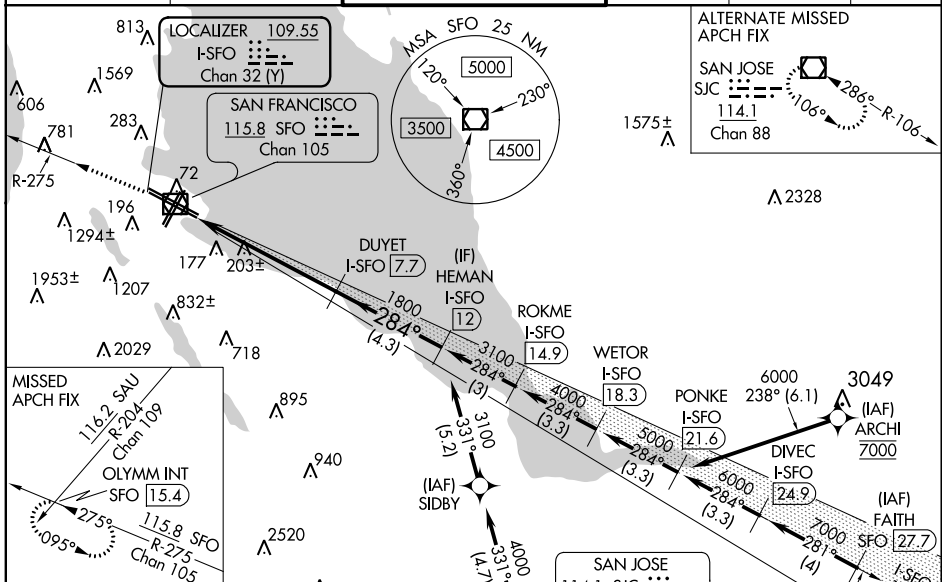
LOC/DME I-SFO <b>109.55</b> Chan 32 (Y)	APP CRS <b>284°</b>	Rwy Idg TDZE Apt Elev	<b>10275</b> <b>13</b> <b>13</b>
---	------------------------	-----------------------------	--

# ILS RWY 28L (SA CAT II)

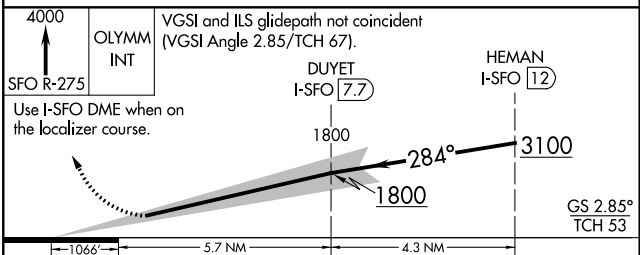
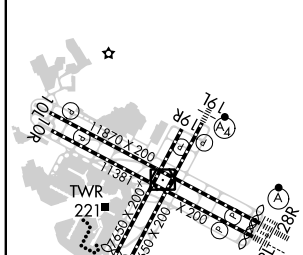
SAN FRANCISCO INTL (SFO)

RNAV 1 - GPS or RADAR required for procedure entry. DME required.		MALSR 	MISSED APPROACH: Climb to 4000 on SFO VOR/DME R-275 to OLYMM INT/ SFO 15.4 DME and hold, continue climb-in-hold to 4000. † Missed approach requires minimum climb of 330 feet per NM to 1600.		
Reduced lighting: requires specific OPSPEC, MSPEC, or LOA approval and use of autoland or HUD to touchdown.					

D-ATIS <b>113.7 115.8 118.85</b>	NORCAL APP CON <b>134.5 338.2</b>	SAN FRANCISCO TOWER <b>120.5 269.1</b>	GND CON <b>121.8</b>	CLNC DEL <b>118.2</b>	CPDLC
-------------------------------------	--------------------------------------	---	-------------------------	--------------------------	-------



ELEV 13	<b>D</b>	TDZE 13
HIRL All Rwys		
TDZ/CL Rwys 19L and 28R		
REIL Rwys 1L, 1R and 10L		



CATEGORY	A	B	C	D
S-ILS 28L †	RA 106/12 100 DA 113			

**SA CAT II ILS - SPECIAL AIRCREW AND AIRCRAFT CERTIFICATION REQUIRED**

SW-2, 19 MAY 2022 to 16 JUN 2022

SW-2, 19 MAY 2022 to 16 JUN 2022