

| | | | |
|---------------|-------------|----------|--------------|
| LOC/DME I-SFO | APP CRS | Rwy Idg | 10275 |
| 109.55 | 284° | TDZE | 13 |
| Chan 32 (Y) | | Apt Elev | 13 |

ILS or LOC RWY 28L

SAN FRANCISCO INTL (SFO)


RNAV 1- GPS or RADAR required for procedure entry. DME required.

⚠ Circling NA to Rwy's 10L, 10R, 19L, and 19R. Circling Rwy 1L, 1R NA at night. LOC procedure NA during simultaneous operations. Simultaneous approach authorized. Simultaneous operations require use of vertical guidance; maintain last assigned altitude until established on glideslope.

RVR 1800 authorized with use of FD or AP or HUD to DA.

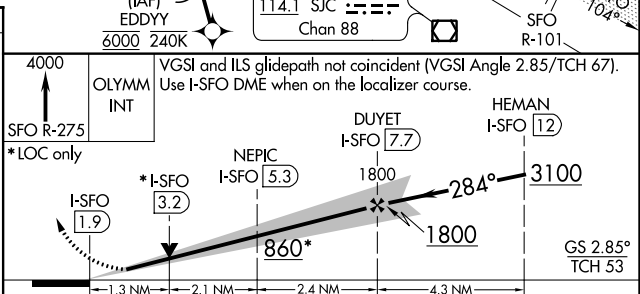
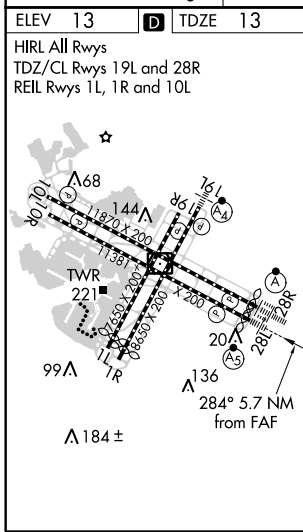
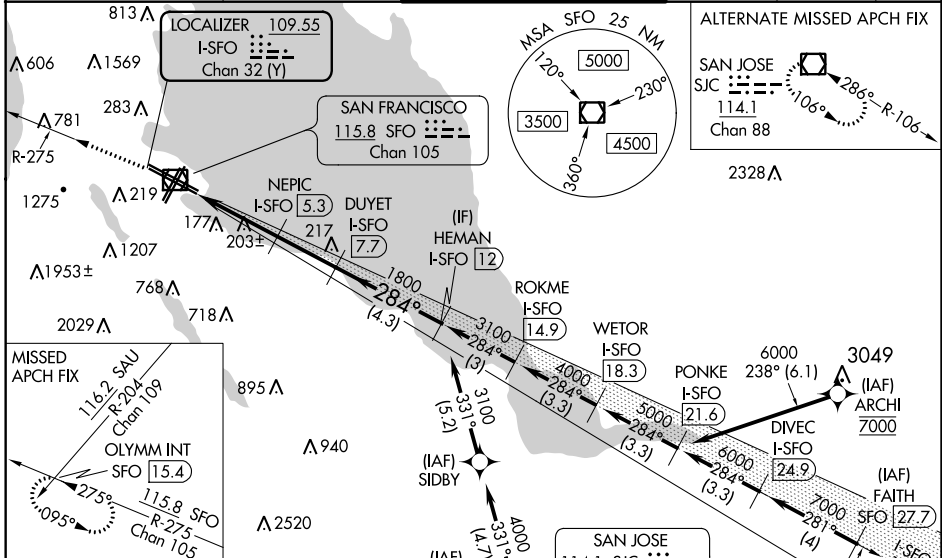
For inop ALS, increase S-ILS 28L all Cats visibility to 2½ SM.

****** For inop ALS increase S-LOC 28L Cat C/D visibility to 2½ SM.

MALSR


MISSED APPROACH: Climb to 4000 on SFO VOR/DME R-275 to OLYMM INT/SFO 15.4 DME and hold, continue climb-hold to 4000.
 † Missed approach requires minimum climb of 330 feet per NM to 1600.

| | | | | | |
|---------------------------|--------------------|---------------------|--------------|--------------|-------|
| D-ATIS | NORCAL APP CON | SAN FRANCISCO TOWER | GND CON | CLNC DEL | CPDLC |
| 113.7 115.8 118.85 | 134.5 338.2 | 120.5 269.1 | 121.8 | 118.2 | |



| CATEGORY | A | B | C | D |
|-------------------|------------------------|---|-------------------------|---|
| S-ILS 28L † | 213/24 | | 200 (200-½) | |
| S-ILS 28L †† | 789-1¼ | | 776 (800-1¼) | |
| S-LOC 28L † | 460/24 | | 447 (500-½) | |
| S-LOC 28L ** | 860/24 847 (900-½) | | 860/40 847 (900-¾) | |
| C CIRCLING | 860-1¼ 847 (900-1¼) | | 960-1¼ 947 (1000-1¼) | |
| | 1560-3 | | 1547 (1600-3) | |
| | | | NA | |

SW-2, 10 OCT 2019 to 07 NOV 2019

SW-2, 10 OCT 2019 to 07 NOV 2019