

BOWIE SEVEN DEPARTURE

TOP ALTITUDE:
5000

D-ATIS
118.9
CLNC DEL
126.7
CPDLC
GND CON
121.9 348.6
SAN ANTONIO DEP CON
125.7 290.225 (Rwys 13/22/31)
127.1 269.1 (Rwy 4 CORPUS CHRISTI TRANSITION)
125.1 307.0 (Rwy 4 LAREDO TRANSITION)
SAN ANTONIO TOWER
119.8 257.8

TAKEOFF MINIMUMS:
Rwys 4, 13L, 13R, 22,
31L, 31R: Standard.

SAN ANTONIO
116.8 SAT
Chan 115
N29°38.64'
W98°27.68'

NOTE: RADAR Required.

YENNS
N29°04.08'
W98°19.32'

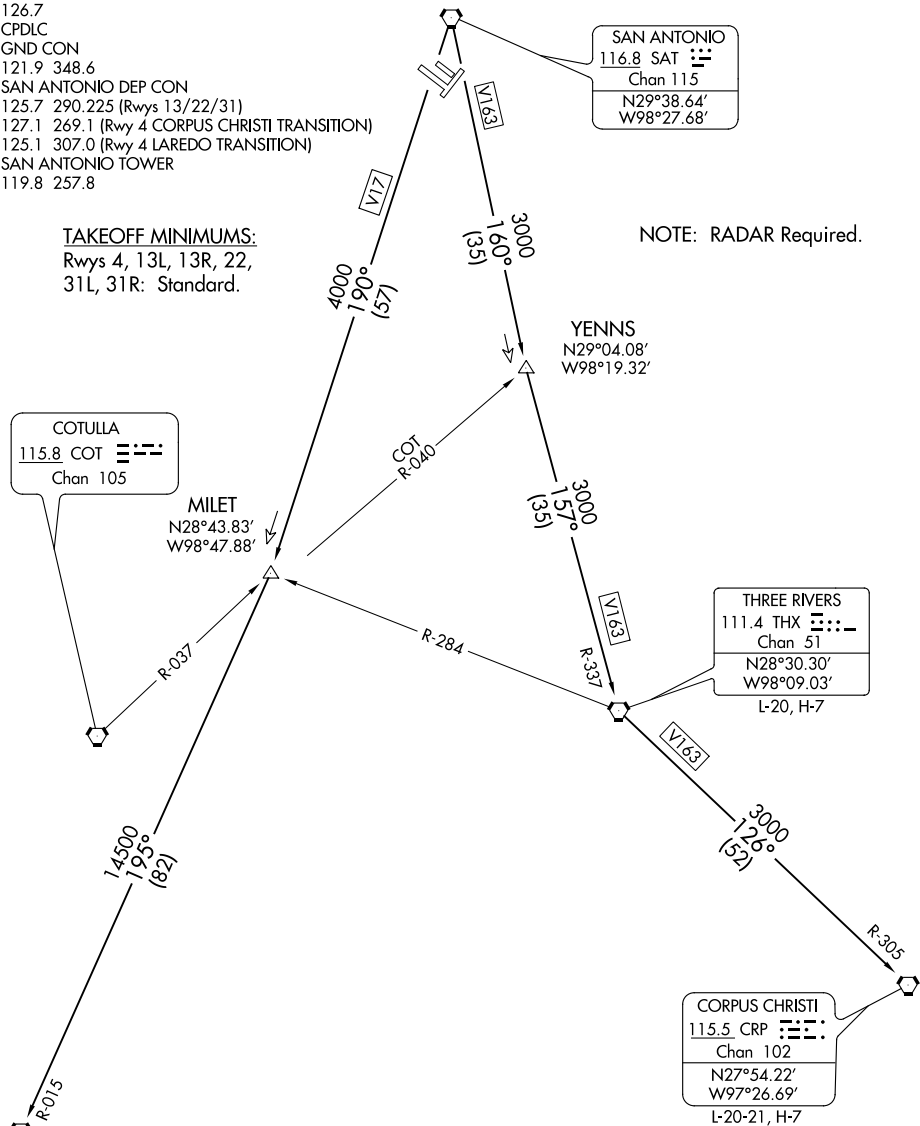
COTULLA
115.8 COT
Chan 105

MILET
N28°43.83'
W98°47.88'

THREE RIVERS
111.4 THX
Chan 51
N28°30.30'
W98°09.03'
L-20, H-7

CORPUS CHRISTI
115.5 CRP
Chan 102
N27°54.22'
W97°26.69'
L-20-21, H-7

LAREDO
117.4 LRD
Chan 121
N27°28.72'
W99°25.06'
L-20, H-7



NOTE: Chart not to scale.

(NARRATIVE ON FOLLOWING PAGE)

SC-3, 10 OCT 2019 to 07 NOV 2019

SC-3, 10 OCT 2019 to 07 NOV 2019

BOWIE SEVEN DEPARTURE



DEPARTURE ROUTE DESCRIPTION

TAKEOFF RWYS 4, 13L 13R, 22, 31L, 31R: Climb on assigned heading for RADAR vectors to SAT VORTAC. Maintain 5000, thence. . .

. . . on transition/route. Expect filed altitude 10 minutes after departure.

CORPUS CHRISTI TRANSITION (BOWIE7.CRP): From over SAT VORTAC on SAT R-160 to YENNS INT/SAT 35 DME, then on THX R-337 to THX VORTAC, then on THX R-126 and CRP R-305 to CRP VORTAC.

LAREDO TRANSITION (BOWIE7.LRD): From over SAT VORTAC on SAT R-190 to MILET INT/SAT 57 DME, then on LRD R-015 to LRD VORTAC.

SC-3, 10 OCT 2019 to 07 NOV 2019

SC-3, 10 OCT 2019 to 07 NOV 2019