

# RNAV (GPS) RWY 19

RICHFIELD MUNI (RIF')

WAAS CH <b>70537</b> <b>W19A</b>	APP CRS <b>207°</b>	Rwy Idg TDZE Apt Elev	<b>7100</b> <b>5286</b> <b>5318</b>
--	------------------------	-----------------------------	---

RNP APCH.

▼ Rwy 19 helicopter visibility reduction below 3/4 NA. When local altimeter setting not received, procedure NA.

⚠ NA

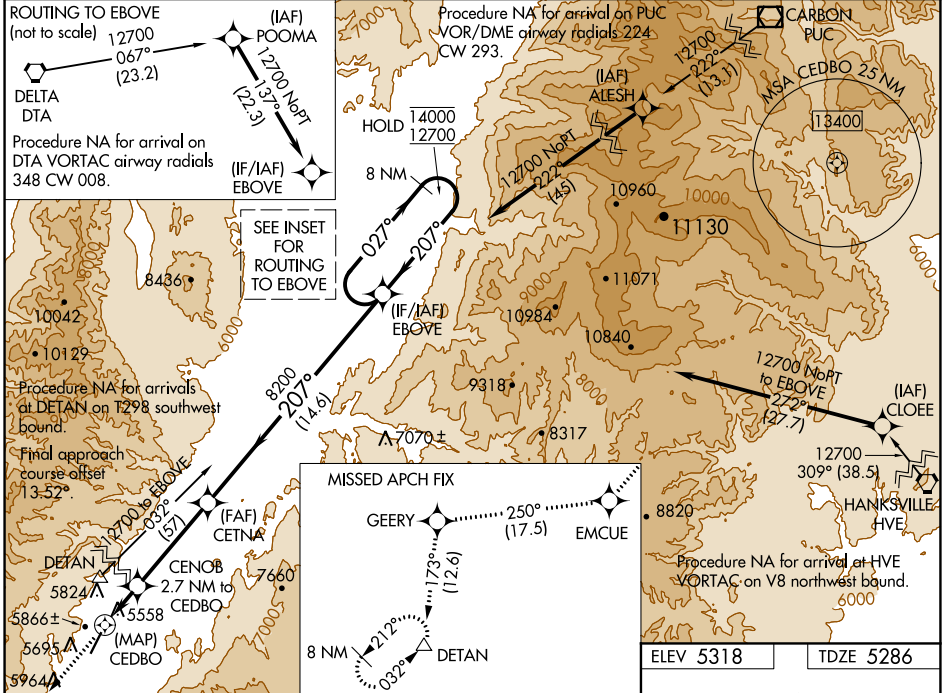
❄ -12°C

MISSED APPROACH: Climb to 12000 direct EMCUE, and track 250° to GEERY, and track 173° to DETAN and hold.

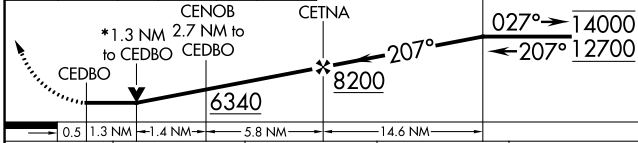
\*Missed approach requires minimum climb of 380 feet per NM to 9600.

#Missed approach requires minimum climb of 390 feet per NM to 9600.

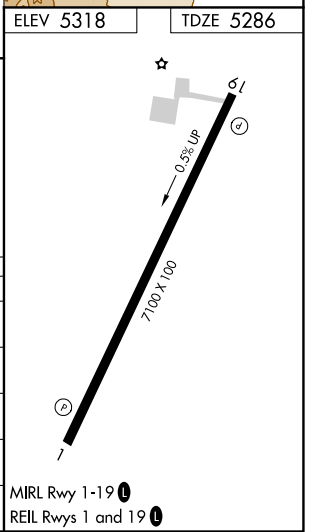
AWOS-3 <b>133.375</b>	SALT LAKE CITY CENTER <b>125.575 379.275</b>	UNICOM <b>122.8 (CTAF) 0</b>
--------------------------	---	---------------------------------



12000 EMCUE	tr	GEERY	tr	DETAN	Visual Segment - Obstacles.
↑	◆	◆	◆	△	
	250°		173°		



CATEGORY	A	B	C	D
LP MDA*	5880-1	594 (600-1)	5880-1 3/4 594 (600-1 3/4)	NA
LP MDA	7340-1 1/4 2054 (2100-1 1/4)	7340-1 1/2 2054 (2100-1 1/2)	7340-3 2054 (2100-3)	NA
LNAV MDA#	6340-1 1/4 1054 (1100-1 1/4)	6340-1 1/2 1054 (1100-1 1/2)	6340-3 1054 (1100-3)	NA
LNAV MDA	7440-1 1/4 2154 (2200-1 1/4)	7440-1 1/2 2154 (2200-1 1/2)	7440-3 2154 (2200-3)	NA
Ⓢ CIRCLING	7440-1 1/4 2122 (2200-1 1/4)	7440-1 1/2 2122 (2200-1 1/2)	7440-3 2122 (2200-3)	NA



MIRL Rwy 1-19 0

REIL Rws 1 and 19 0

SW-4, 05 NOV 2020 to 03 DEC 2020

SW-4, 05 NOV 2020 to 03 DEC 2020