

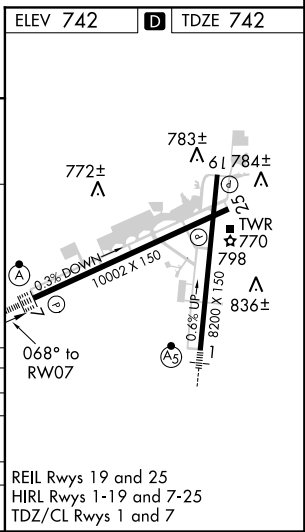
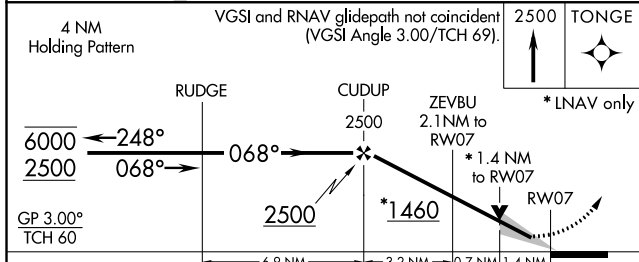
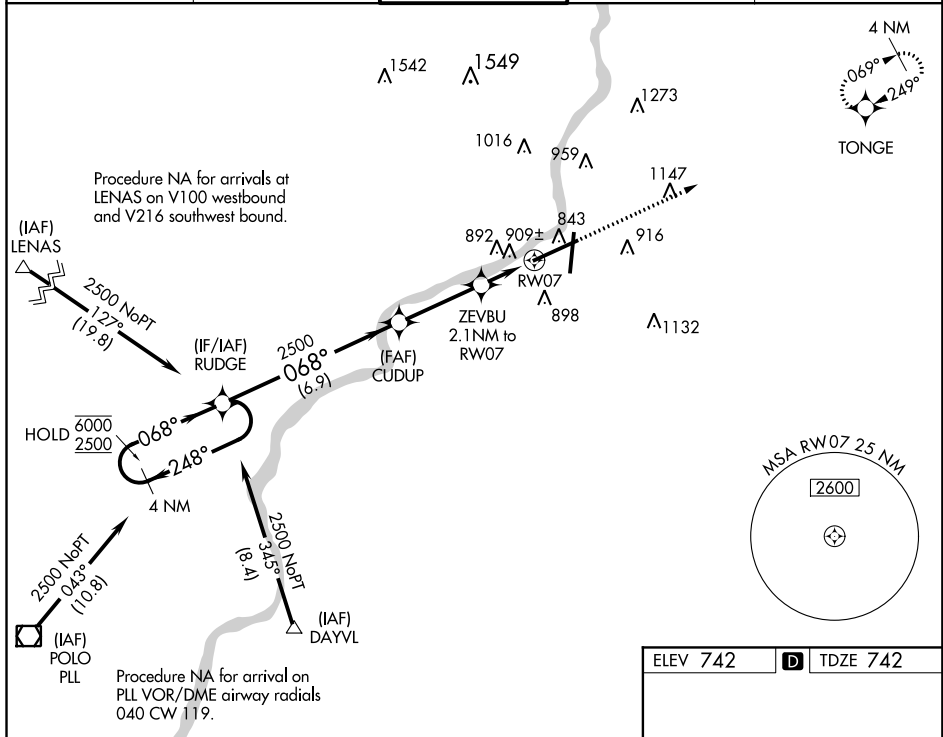
WAAS CH 53621 W07A	APP CRS 068°	Rwy Idg 10002 TDZE 742 Apt Elev 742
--	------------------------	--

RNAV (GPS) RWY 7

CHICAGO/ROCKFORD INTL (RFD)

RNP APCH.	ALSF-2	MISSED APPROACH: Climb to 2500 direct TONGE and hold.
▼ For uncompensated Baro-VNAV systems, procedure NA below -25°C or above 39°C.		

ATIS 127.6	ROCKFORD APP CON 121.0 327.0	ROCKFORD TOWER 118.1 239.0	GND CON 121.9 239.0	CLNC DEL 119.25
----------------------	--	--------------------------------------	-------------------------------	---------------------------



CATEGORY	A	B	C	D
LPV DA		942/24	200 (200-½)	
LNAV/VNAV DA		1167/45	425 (500-¾)	
LNAV MDA	1240/24	498 (500-½)	1240/50	498 (500-1)
CIRCLING	1240-1	498 (500-1)	1240-1½ 498 (500-1½)	1320-2 578 (600-2)

EC-3, 12 SEP 2019 to 10 OCT 2019

EC-3, 12 SEP 2019 to 10 OCT 2019