

LOC I-RDG <b>109.5</b>	APP CRS <b>004°</b>	Rwy Idg <b>5151</b> TDZE <b>343</b> Apt Elev <b>344</b>
---------------------------	------------------------	---

# ILS or LOC RWY 36

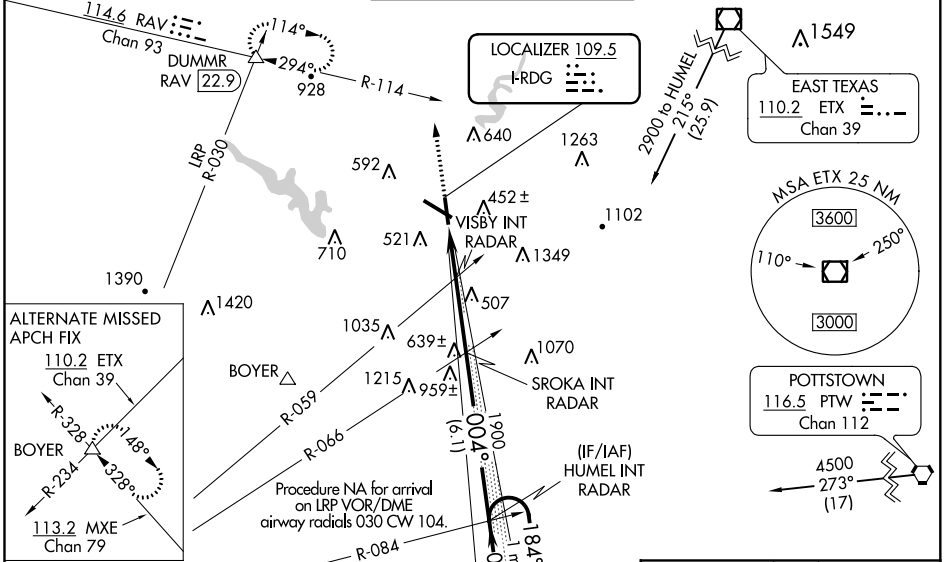
READING RGNL/CARL A SPAATZ FLD (RDG)

**⚠** Night Landing: Rwy 18, 31 NA. Inoperative table does not apply. When local altimeter setting not received, use Harrisburg Intl altimeter setting and increase S-ILS 36 DA to 686 feet and all Cats visibility 1/4 mile, and increase all MDA 100 feet, and S-LOC 36 Cats C and D visibility 1/4 mile, and Circling Cat B and C visibility 1/4 mile and Cat D visibility 1/2 mile.

**MALSF**

**MISSED APPROACH:** Climb to 3000 on heading 004° and RAV VORTAC R-114 to DUMMR INT/RAV 22.9 DME and hold, continue climb-in-hold to 3000.

ATIS <b>127.1</b>	READING APP CON* <b>125.15 257.9</b>	READING TOWER* <b>119.9 (CTAF) 288.3</b>	GND CON <b>121.9</b>	UNICOM <b>122.95</b>
----------------------	---	---	-------------------------	-------------------------



NE-4, 22 APR 2021 to 20 MAY 2021

NE-4, 22 APR 2021 to 20 MAY 2021

ELEV 344 **D** TDZE 343

Procedure NA for arrival on MXE VORTAC airway radials 030 CW 025.

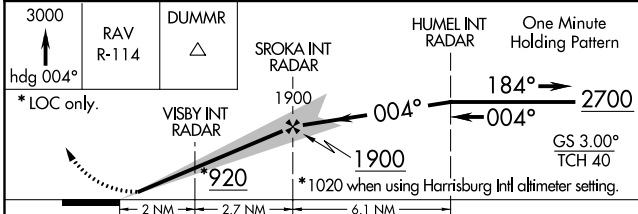
Procedure NA for arrival on LRP VOR/DME airway radials 030 CW 104.

IAF LANCASTER 117.3 LRP (Chan 120)

IAF MODENA 113.2 MXE (Chan 79)

2700 NoPT 084° (17.3)

2700 NoPT 333° (20.3)



One Minute Holding Pattern

REIL Rwy 13 and 31

HIRL Rws 13-31 and 18-36

FAF to MAP 4.7 NM

004° 4.7 NM from FAF

81, 1.08 UN, 5151 X 150, 6350 X 150, TWR 422, 36, 13

Knots	60	90	120	150	180
Min:Sec	4:42	3:08	2:21	1:53	1:34

CATEGORY	A	B	C	D
S-ILS 36		593-1	250 (300-1)	
S-LOC 36	820-1	477 (500-1)	820-1 1/4 477 (500-1 1/4)	820-1 1/2 477 (500-1 1/2)
CIRCLING	1020-1	676 (700-1)	1020-2 676 (700-2)	1140-2 1/2 796 (800-2 1/2)