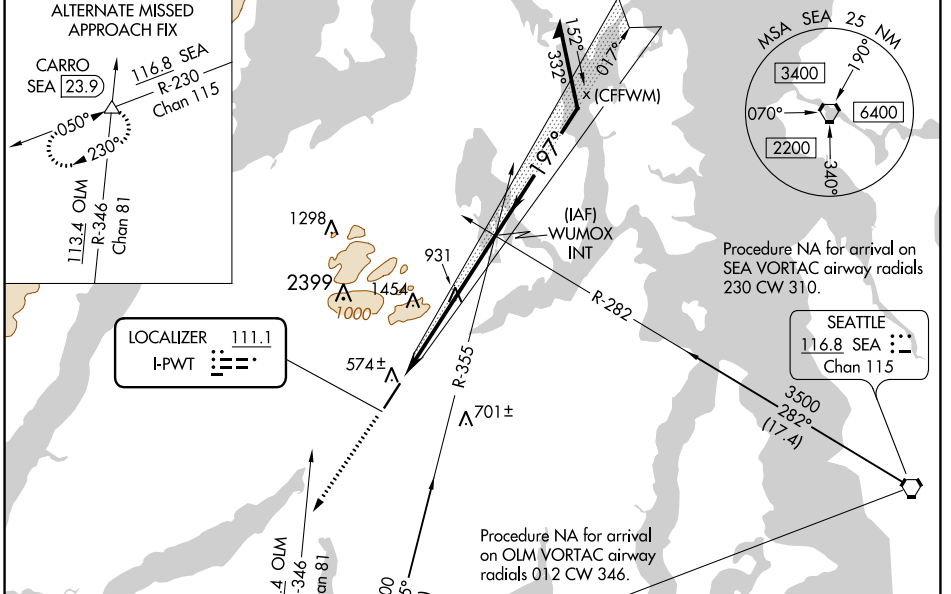


LOC I-PWWT <b>111.1</b>	APP CRS <b>197°</b>	Rwy Idg TDZE Apt Elev	<b>6000</b> <b>442</b> <b>444</b>
----------------------------	------------------------	-----------------------------	---

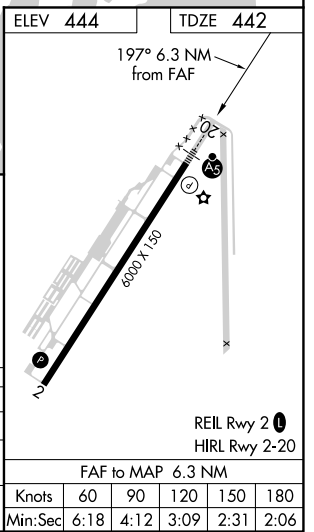
# ILS or LOC RWY 20

BREMERTON NATIONAL (PWT)

<p><b>▽</b> Circling NA for Cats C and D west of Rwy 2-20. When local altimeter setting not received, use Seattle-Tacoma Intl altimeter setting and increase all DA 45 feet, all MDA 60 feet and increase S-LOC 20 Cat C and D visibility 1/2 SM, Circling Cat A, C and D visibility 1/4 SM. For inop ALS, increase S-LOC 20 Cat C and D visibility to 2 SM. For inop ALS, when using Seattle-Tacoma Intl altimeter setting, increase S-LOC 20 Cat C and D visibility to 2 1/2 SM.</p>	<p>MALSR</p>	<p>MISSED APPROACH: Climb to 4000 on heading 197° and OLM VORTAC R-346 to CARRO INT/OLM 19.4 DME and hold, continue climb-in-hold to 4000.</p>



ELEV 444	TDZE 442
----------	----------



4000	OLM R-346	CARRO	WUMOX INT	Remain within 10 NM
hdg 197°		△	3500	
			2500	
			3000	
			2500	GS 3.00° TCH 49
			6.3 NM	

CATEGORY	A	B	C	D
S-ILS 20		642-1/2	200 (200-1/2)	
S-LOC 20	1200-1/2 758 (800-1/2)	1200-3/4 758 (800-3/4)	1200-1 3/4 758 (800-1 3/4)	758 (800-1 3/4)
<b>C</b> CIRCLING	1200-1 756 (800-1)	1200-1 1/4 756 (800-1 1/4)	1200-2 1/4 756 (800-2 1/4)	1240-2 1/2 796 (800-2 1/2)

FAF to MAP 6.3 NM					
Knots	60	90	120	150	180
Min:Sec	6:18	4:12	3:09	2:31	2:06

NW-1, 25 FEB 2021 to 25 MAR 2021

NW-1, 25 FEB 2021 to 25 MAR 2021