

APP CRS 213°	Rwy ldg 5752
	TDZE 11
	Apt Elev 12

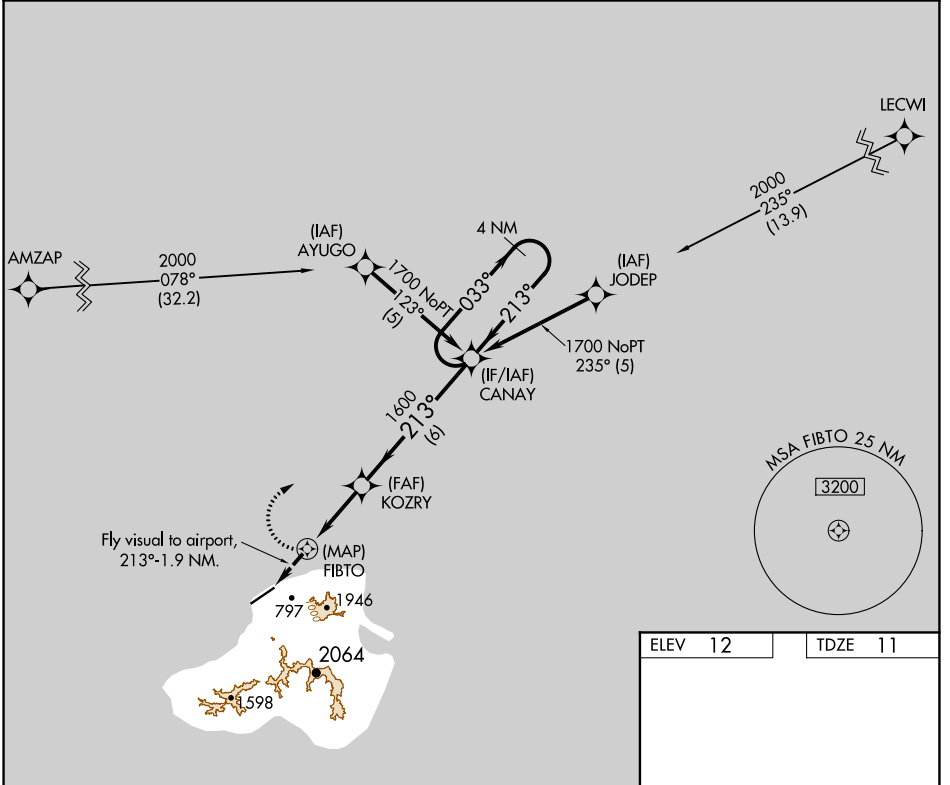
RNAV (GPS) RWY 23

KOSRAE (TTK)(PTSA)

⚠ Circling not authorized southeast of Rwy 5-23. Obtain local altimeter setting on CTAF; when not received, procedure not authorized. DME/DME RNP-0.3 NA. No controlled airspace below 5500.

MISSED APPROACH: Climbing right turn to 1700 direct CANAY WP and hold.

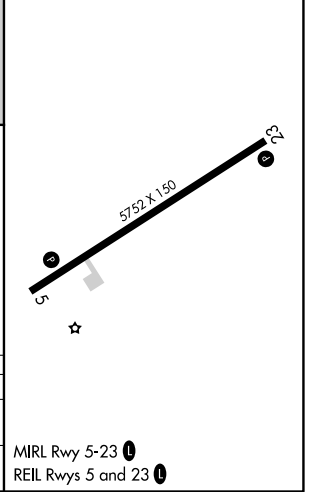
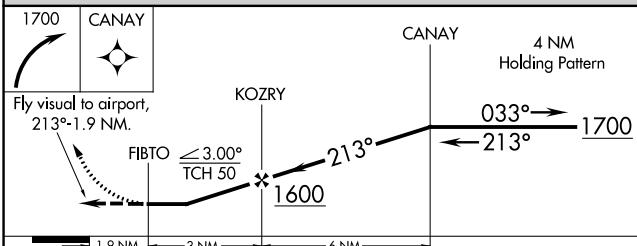
KOSRAE RADIO
123.6 (CTAF) **📻**



PAC, 02 DEC 2021 to 27 JAN 2022

PAC, 02 DEC 2021 to 27 JAN 2022

ELEV 12	TDZE 11
---------	---------



CATEGORY	A	B	C	D
LNVA MDA	800-2	789 (800-2)	800-2¼ 789 (800-2¼)	800-2½ 789 (800-2½)
CIRCLING	800-2	788 (800-2)	800-2¼ 788 (800-2¼)	800-2½ 788 (800-2½)

APP CRS	Rwy Idg	5752
058°	TDZE	10
	Apt Elev	12

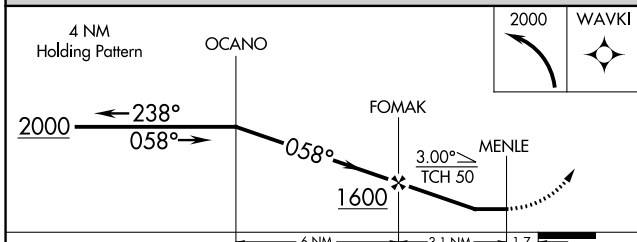
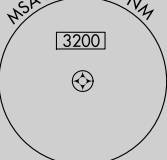
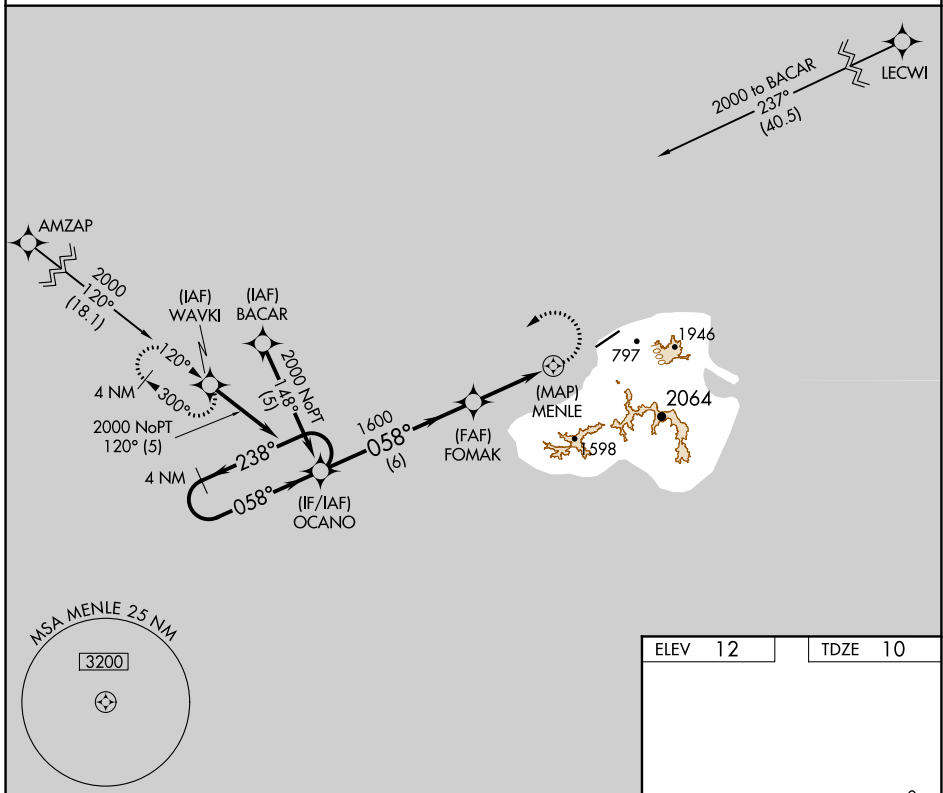
RNAV (GPS) RWY 5

KOSRAE (TTK)(PTSA)

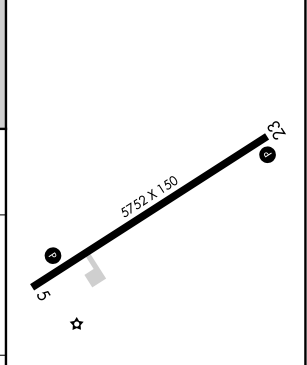
⚠ Circling not authorized southeast of Rwy 5-23.
⚠ Obtain local altimeter setting on CTAF; when not received, procedure not authorized. DME/DME RNP-0.3 NA.
 No controlled airspace below 5500.

MISSED APPROACH: Climbing left turn to 2000 direct WAVKI WP and hold.

KOSRAE RADIO
123.6 (CTAF) **📻**



ELEV	12	TDZE	10
------	----	------	----



CATEGORY	A	B	C	D
LNNAV MDA	460-2 450 (500-2)			
CIRCLING	520-2 508 (600-2)			580-2 568 (600-2)

MIRL Rwy 5-23 **📻**
 REIL Rwys 5 and 23 **📻**

PAC, 02 DEC 2021 to 27 JAN 2022

PAC, 02 DEC 2021 to 27 JAN 2022