


VORTAC PSI 111.0 Chan 47	APP CRS 119°	Rwy Idg 6520 TDZE 980 Apt Elev 980
--	------------------------	---

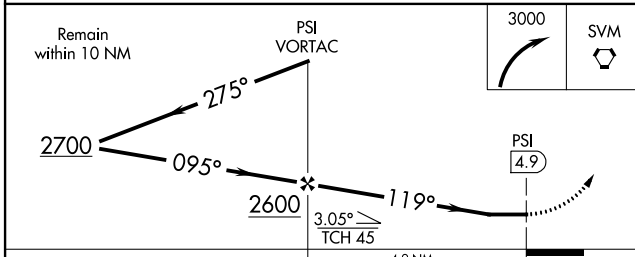
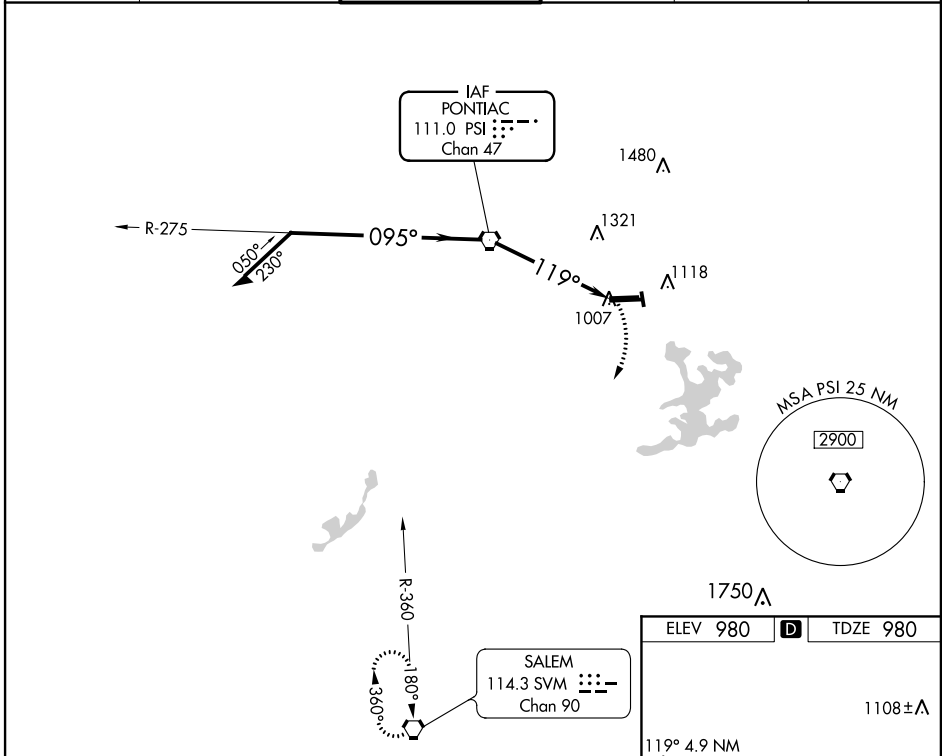
VOR RWY 9R

OAKLAND COUNTY INTL (P'TK)

⚠ Inoperative table does not apply. Visibility reduction by helicopters NA.
⚠ When local altimeter setting not received, use Coleman A Young Muni altimeter setting and increase all MDA 120 feet, increase S-9R Cat C/D and Circling Cat C visibility 1/4 mile and Circling Cat D visibility 1/2 mile. Inoperative table does not apply, when using Coleman A Young Muni altimeter setting.

MALSR
 MISSED APPROACH:
 Climbing right turn to 3000 direct SVM
 VORTAC and hold.

ATIS 125.025	DETROIT APP CON 127.5 284.0	PONTIAC TOWER * 120.5 (CTAF) 0	GND CON 121.9	CLNC DEL 118.25	UNICOM 122.95
------------------------	---------------------------------------	--	-------------------------	---------------------------	-------------------------



ELEV 980	D	TDZE 980
----------	----------	----------

1108±
1066±
1018±
1024±
1029±
1042±

119° 4.9 NM from FAF

5676 X 100
6521 X 150

TWR 1037

HIRL Rwy 9R-27L
 MIRL Rwy 9L-27R
 REIL Rwys 9L and 27R
 REIL Rwy 27L

FAF to MAP 4.9 NM

Knots	60	90	120	150	180
Min:Sec	4:54	3:16	2:27	1:58	1:38

CATEGORY	A	B	C	D
S-9R	1600/50	620 (700-1)	1600-1 3/4 620 (700-1 3/4)	1600-2 620 (700-2)
CIRCLING	1600-1	620 (700-1)	1600-1 3/4 620 (700-1 3/4)	1640-2 660 (700-2)

EC-1, 21 JUN 2018 to 19 JUL 2018

EC-1, 21 JUN 2018 to 19 JUL 2018