


WAAS Ch <b>40012</b> <b>W16A</b>	APP CRS <b>165°</b>	Rwy Idg TDZE Apt Elev	<b>10518</b> <b>100</b> <b>100</b>
--	------------------------	-----------------------------	--

# RNAV (GPS) RWY 16

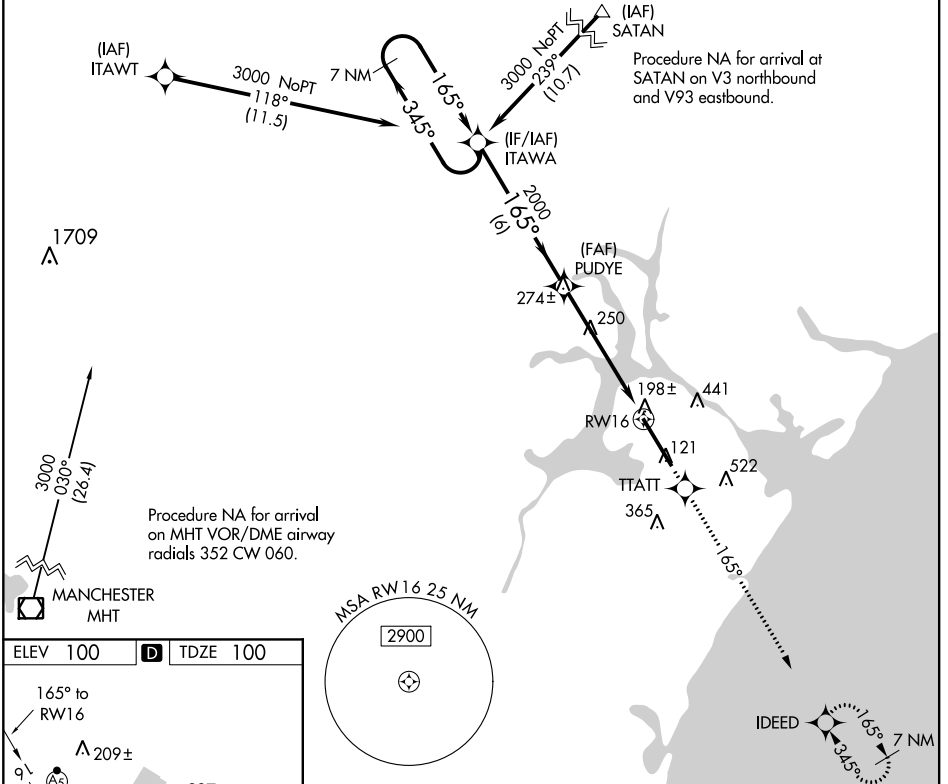
PORTSMOUTH INTL AT PEASE (PSM)

**▲** Circling NA East of Rwy 16-34. For uncompensated Baro-VNAV systems, LNAV/VNAV NA below -15°C (5°F) or above 49°C (120°F). DME/DME RNP-0.3 NA. For inoperative MALSR, increase LPV Cat E visibility to RVR 4000, LNAV/VNAV Cat E visibility to RVR ASR 6000, LNAV Cat D visibility to RVR 6000, and LNAV Cat E visibility to 1 1/2 miles. \*\* RVR 1800 authorized with use of FD or AP or HUD to DA.

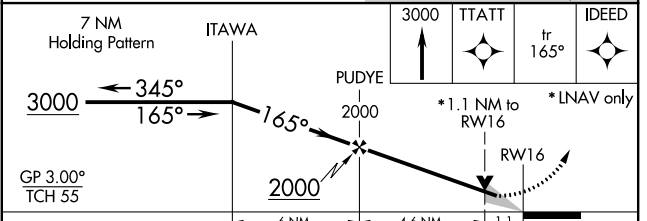
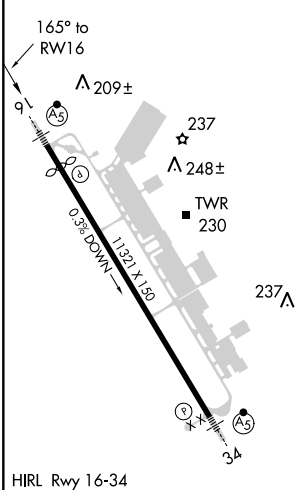
**MALSR** 

**MISSED APPROACH:** Climb to 3000 direct TTATT and on track 165° to IDEED and hold.

ATIS <b>132.05 273.5</b>	BOSTON APP CON <b>125.05 269.4</b>	PORTSMOUTH TOWER <b>128.4 269.0</b>	GND CON <b>120.95 275.8</b>	CLNC DEL <b>335.8</b>	UNICOM <b>122.95</b>
-----------------------------	---------------------------------------	--	--------------------------------	--------------------------	-------------------------



ELEV 100	<b>D</b>	TDZE 100
----------	----------	----------



CATEGORY	A	B	C	D	E
LPV DA **	300/24 200 (200-1/2)				
LNAV/VNAV DA	452/40 352 (400-3/4)				
LNAV MDA	500/24 400 (400-1/2)		500/50 400 (400-1)		
CIRCLING	500-1	560-1	560-1 1/2	680-2	800-2 1/2
	400 (400-1)	460 (500-1)	460 (500-1 1/2)	580 (600-2)	700 (800-2 1/2)

NE-1, 07 DEC 2017 to 04 JAN 2018

NE-1, 07 DEC 2017 to 04 JAN 2018