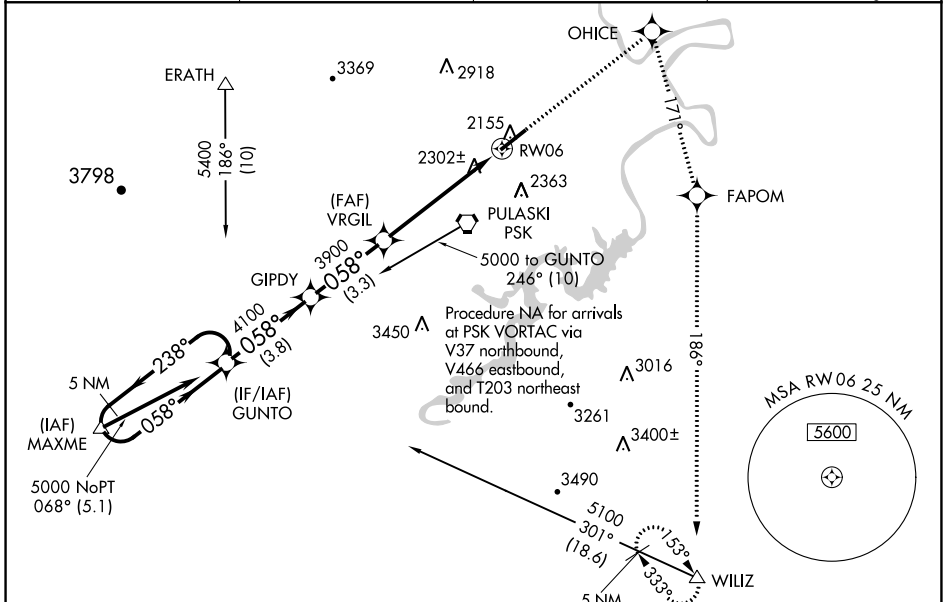


WAAS CH 87015 W06A	APP CRS 058°	Rwy Idg 6201 TDZE 2105 Apt Elev 2105
--	------------------------	---

RNAV (GPS) RWY 6

NEW RIVER VALLEY (PSK)

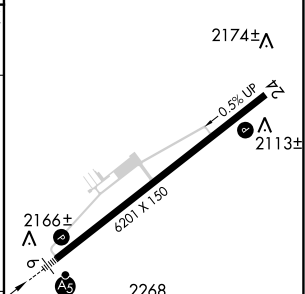
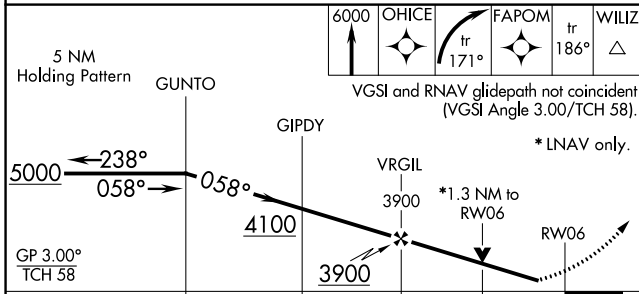
RNP APCH.		MISSED APPROACH: Climb to 6000 direct OHICE and right turn via track 171° to FAPOM and via track 186° to WILIZ and hold.	
<p>⚠ For uncompensated Baro-VNAV systems, LNAV/VNAV NA below -19°C or above 44°C. When local altimeter setting not received, use Blacksburg altimeter setting and increase all DA 36 feet, and all MDA 40 feet. VDP and Baro-VNAV NA when using Blacksburg altimeter setting. Inop table does not apply to LPV all Cats and LNAV Cats A and B. For inop MALSR, increase LNAV Cat C visibility to 1 ¼ SM.</p>			
AWOS-3 127.375	ROANOKE APP CON 126.0 339.8	ROANOKE CLNC DEL 121.7	UNICOM 122.7 (CTAF)



NE-3, 03 DEC 2020 to 31 DEC 2020

NE-3, 03 DEC 2020 to 31 DEC 2020

ELEV 2105	TDZE 2105
-----------	-----------



CATEGORY	A	B	C	D
LPV DA		2305-1	200 (200-1)	
LNAV/ VNAV DA		2597-1¼	492 (500-1¼)	
LNAV MDA		2560-1	455 (500-1)	
CIRCLING	2620-1	515 (600-1)	2620-1½ 515 (600-1½)	2680-2 575 (600-2)

HIRL Rwy 6-24 **Ⓢ**

REIL Rwy 24 **Ⓢ**