

LOC I-POC <b>110.5</b>	APP CRS <b>259°</b>	Rwy Idg TDZE Apt Elev	<b>4151</b> <b>1005</b> <b>1014</b>
---------------------------	------------------------	-----------------------------	---

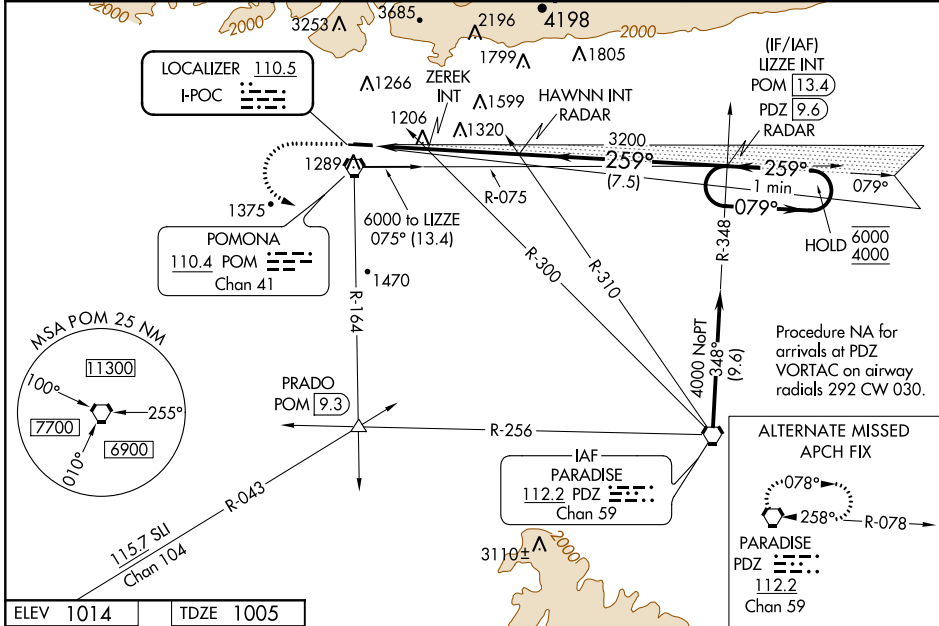
# LOC RWY 26L

BRACKETT FIELD (POC)

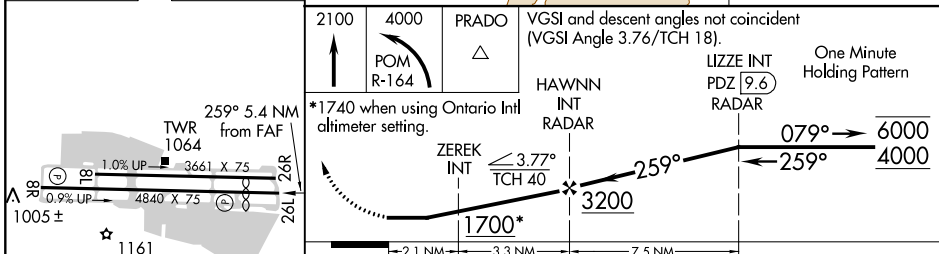
**⚠** Circling to Rwy 8L NA at night. Circling NA for Cat C north of Rwy 8L-26R. When Circling to Rwy 8R at night, operational VGSi required, remain on or above VGSi glidepath until threshold. Rwy 26L helicopter visibility reduction below ¾ SM NA. When local altimeter setting not received, use Ontario Intl altimeter setting and increase all MDAs 40 feet.

**MISSED APPROACH:** Climb to 2100 then climbing left turn to 4000 on POM VORTAC R-164 to PRADO INT/POM 9.3 DME and hold.

ATIS <b>124.4</b>	SOCAL APP CON <b>125.5 318.2</b>	BRACKETT TOWER★ RWY 8R/26L <b>118.2</b> (CTAF)	RWY 8L/26R <b>133.3</b>	GND CON <b>125.0</b>	CLNC DEL <b>121.875</b>	UNICOM <b>122.95</b>
----------------------	-------------------------------------	--	----------------------------	-------------------------	----------------------------	-------------------------



ELEV 1014	TDZE 1005
-----------	-----------



CATEGORY	A	B	C	D
S-LOC 26L	1700-1	695 (700-1)	1700-2 695 (700-2)	NA
<b>C</b> CIRCLING	1700-1	686 (700-1)	1760-2¼ 746 (800-2¼)	NA
ZEREK MINIMUMS (DUAL VOR RECEIVERS REQUIRED)				
S-LOC 26L	1460-1	455 (500-1)	1460-1⅜ 455 (500-1⅜)	NA
<b>C</b> CIRCLING	1680-1	666 (700-1)	1760-2¼ 746 (800-2¼)	NA

REIL Rwys 8R and 26L  
MIRL Rwy 8R-26L

FAF to MAP 5.4 NM

Knots	60	90	120	150	180
Min:Sec	5:24	3:36	2:42	2:10	1:48

SW-3, 05 NOV 2020 to 03 DEC 2020

SW-3, 05 NOV 2020 to 03 DEC 2020